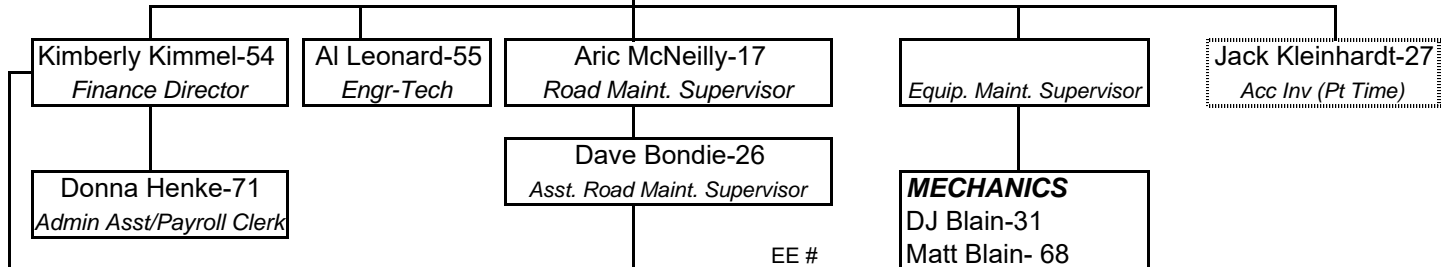
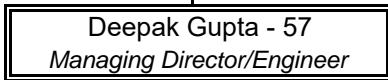


ORGANIZATIONAL CHART  
**Clare County Road Commission**  
 2019



<b>Saundra Kozak-63</b> <i>Receptionist (Temp)</i>
---

<b>MECHANICS</b> DJ Blain-31 Matt Blain- 68 Dave Graham-169
--

<b>TRUCKS</b>	EE #
Josh Burger	142
Shawn Burger	62
Jon Cooper	33
Brad Darnell	65
Larry Edwards	36
Mike Fillhard	22
Nate Hulliberger	15
Andy Krawczynski-MDOT	24
Rick Marlow	138
Henry O'Hare	3
Brian Standen	25
Alfred Townsend	16
Bruce Wentworth-MDOT	158

Summary of Personnel	
Commissioners	3
Regular Employees	33
Part-Time/Temp Employees	3
Seasonal	0
<b>Total Personnel</b>	<b>39</b>

<b>PERMITS-</b> Al Leonard
-------------------------------

<b>NIGHT PATROL</b> Scott Schutz/Brian Coon
--

Breakdown by Class, Regular Employees	
Laborers	0
Truck Drivers	14
Operators	9
Sign Shop	1
Mechanics	3
<b>sub-total, union</b>	<b>27</b>

<b>SIGNS</b>	EE #
John Koch	59

<b>TRUCK TRACTOR</b>	EE #
Ken Pitchford	7

<b>BOOM MOWER</b>	EE #
Randy Bonham	11

<b>GRADERS</b>	EE #
Brian Coon	128
Ed Jacobs	64
Mark Loomis	6
Jeff Stager	166

Commissioners	3
Admin & Supervision (Road, Shop)	6
<b>Part-time/Temp</b>	<b>3</b>
<b>sub-total, non-union</b>	<b>12</b>
<b>Total Personnel</b>	<b>39</b>

<b>LABORER</b>
----------------

<b>LOADER</b>	EE #
Bob Fisch	147
Greg Hilyard	10

<b>TEMP</b>	EE #
Justin Casler	170

<b>EXCAVATOR</b>	EE #
Jason Motney	148
Scott Schutz	118

<b>Admin Wage Range:</b>			
-Salary Wage Range:	\$41,600	\$91,520	
(Hourly Conversion)	\$20.00	\$44.00	
<b>Operation/Road Wage Range: *</b>			
-Hourly Wage Range:	\$14.00	\$20.75	
*Job classification and wage rates: ranges based on most recent contract/collective bargaining agreement			