

- LEGEND**
- COUNTY LINE
 - CORPORATE LIMITS
 - STATE TRUNKLINE
 - COUNTY PRIMARY
 - COUNTY LOCAL
 - ADJACENT COUNTY
 - CITY OR VILLAGE STREET

PRIMARY ROAD SYSTEM IS 45.80 MILES
 LOCAL ROAD SYSTEM IS 30.58 MILES

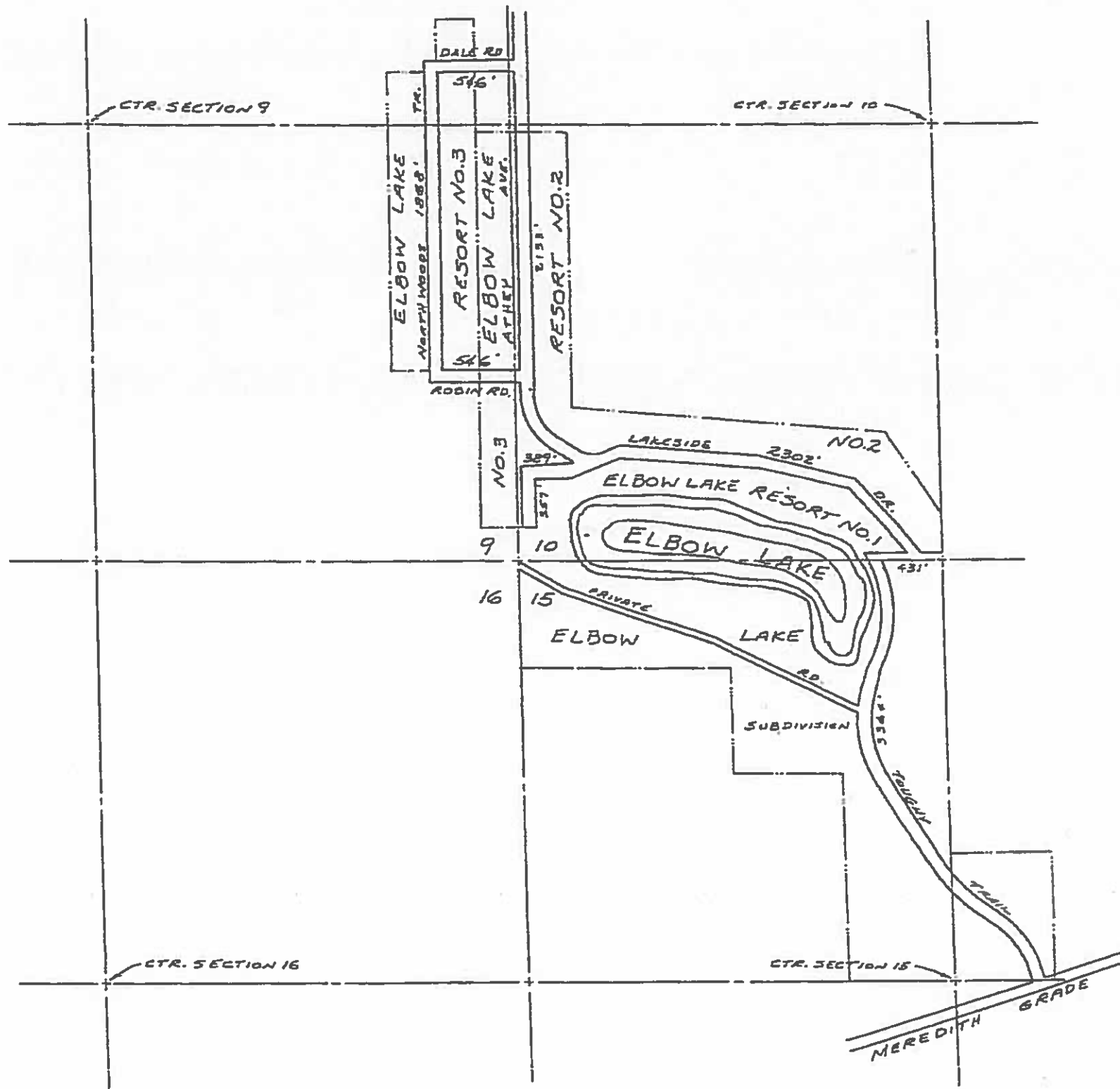
I HEREBY CERTIFY THAT THE ROADS SHOWN HEREON BY SYMBOL OR IN RED AS PRIMARY ROADS AND THOSE SHOWN HEREON BY SYMBOL OR IN GREEN AS LOCAL ROADS ARE IN USE AND ARE UNDER THE JURISDICTION OF THE COUNTY ROAD COMMISSION.

CHAIRMAN _____ DATE _____






SCALE 0 1/2 1 MILE
 One inch equals 3000 feet

Clas Co-18 T. 20 N. R. 3 W.
 FRANKLIN - 16
 Prepared by 16
 MICHIGAN STATE HIGHWAY DEPARTMENT



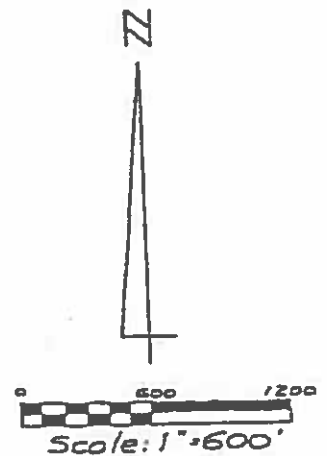
LEGEND

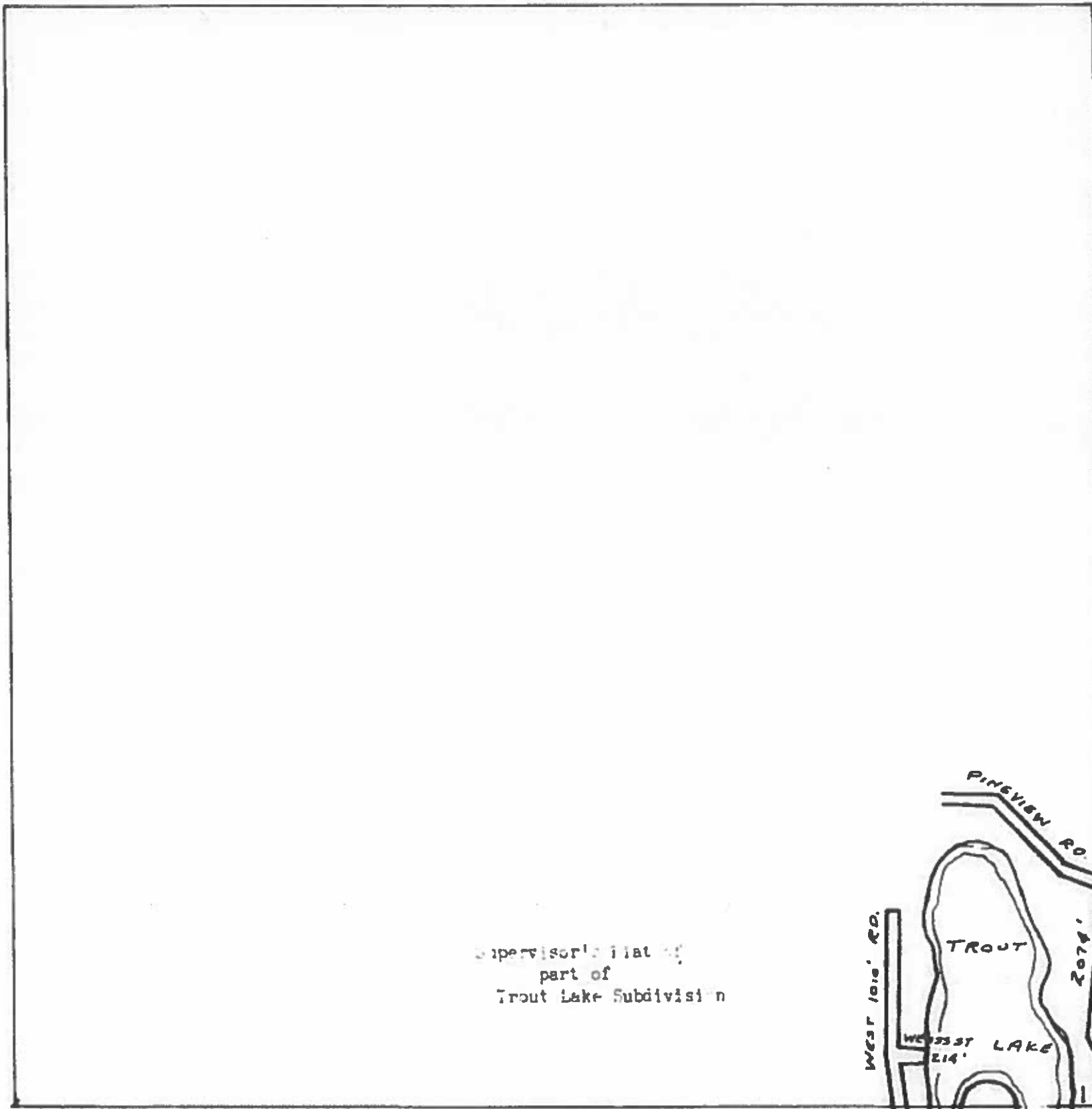
- STATE TRUNKLINE 
- COUNTY PRIMARY 
- COUNTY LOCAL 

Total Feet 11936 Miles 2.26

FRANKLIN TOWNSHIP
 T 20 N, R 3 W
 SECTIONS 9, 10, 15, 16
 CLARE COUNTY

Sheet 16 - 1





Supervisor's Plat of
part of
Trout Lake Subdivision

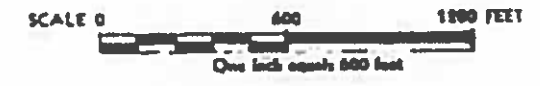
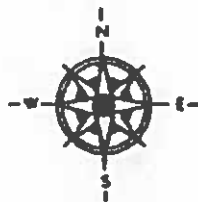
LEGEND

COUNTY LINE	---
CORPORATE LIMITS	----
STATE TOWNLINE	=====
COUNTY PRIMARY	-----
COUNTY LOCAL	=====
ADJACENT COUNTY	
CITY OR VILLAGE STREET	

TOTAL FEET 3298 EQUALS 0.62 MILES

I HEREBY CERTIFY THAT THE ROADS SHOWN
HEREON BY SYMBOL OR IN GREEN AS LOCAL
ROADS ARE IN USE AND ARE UNDER THE JURIS-
DICTION OF THE COUNTY ROAD COMMISSION

CHAIRMAN DATE

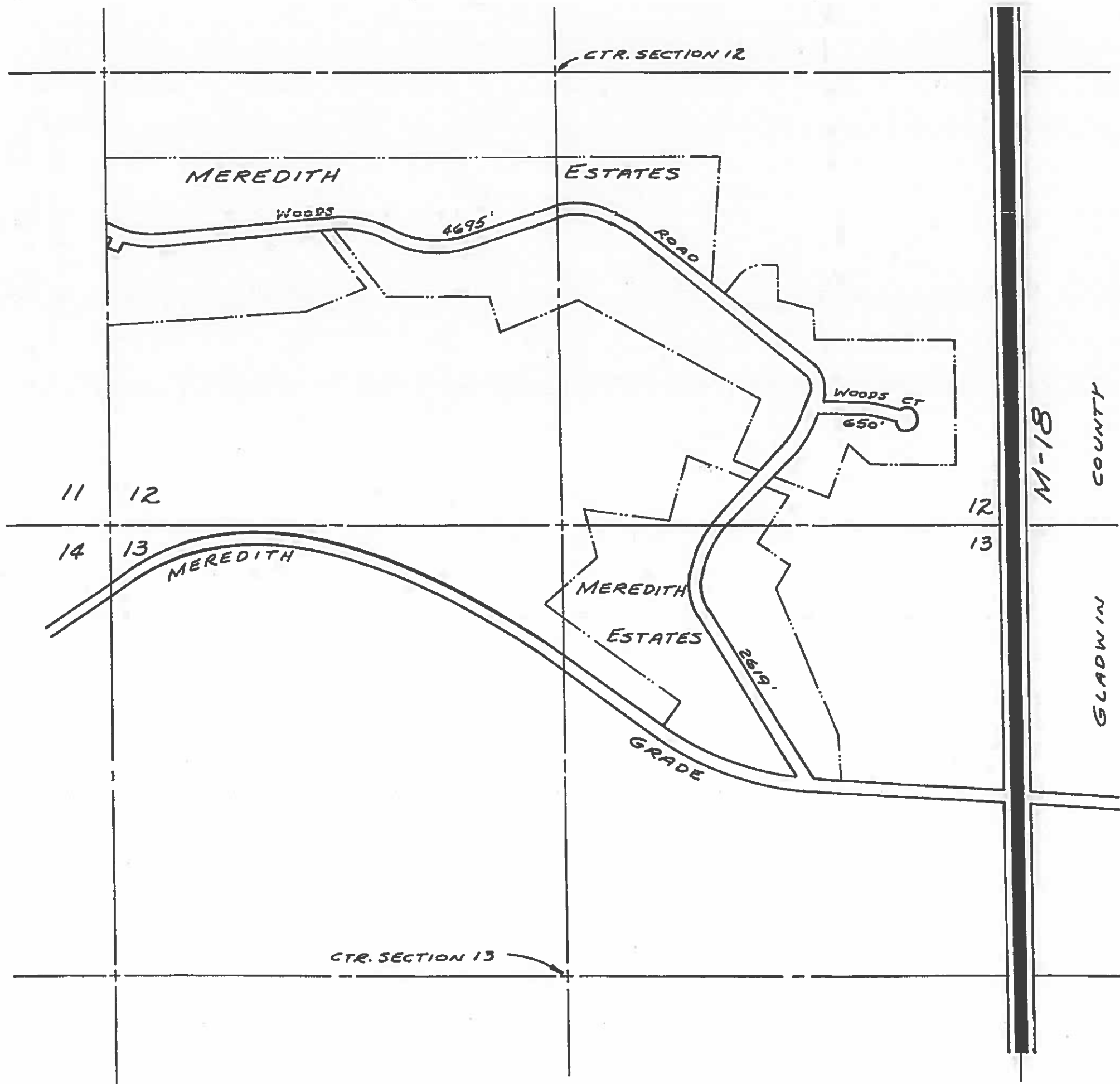


TOWNSHIP Franklin
SECTION 14 12 7 2W
COUNTY Clare

Prepared by
MICHIGAN STATE HIGHWAY DEPARTMENT

16-2

16-2



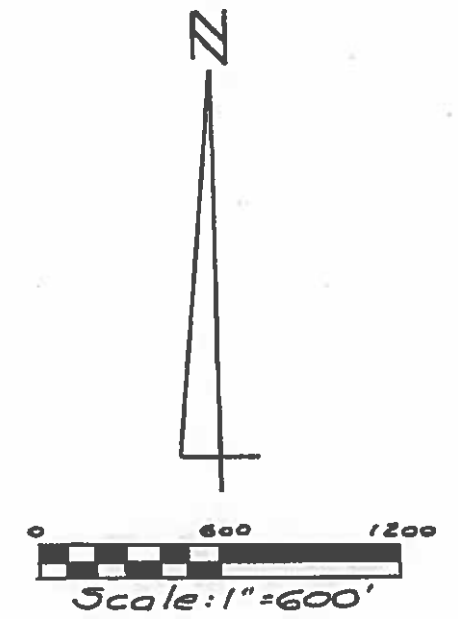
LEGEND

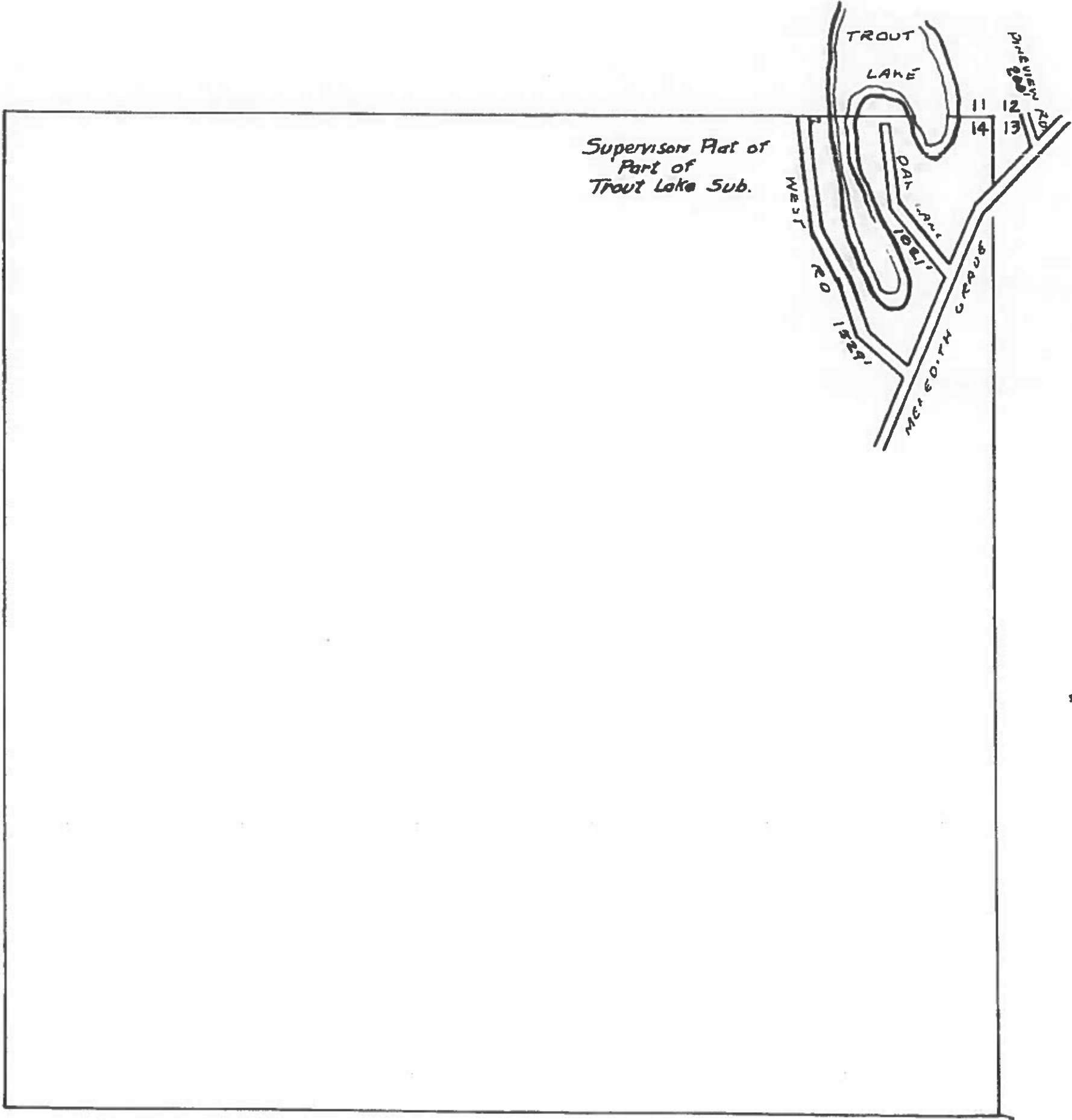
- STATE TRUNKLINE 
- COUNTY PRIMARY 
- COUNTY LOCAL 

Total Feet 7964 Miles 1.51

FRANKLIN TOWNSHIP
 T 20 N, R 3 W
 SECTIONS 12 and 13
 CLARE COUNTY

Sheet 16 - 3



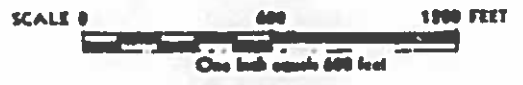
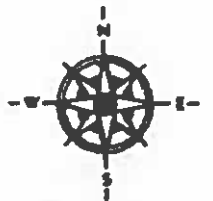


LEGEND

COUNTY LINE	---
CORPORATE LIMITS	----
STATE TRUNKLINE	=====
COUNTY PRIMARY	=====
COUNTY LOCAL	=====
ADJACENT COUNTY	=====
CITY OR VILLAGE STREET	=====

TOTAL FEET 2,750 EQUALS 0.52 MILES

I HEREBY CERTIFY THAT THE ROADS SHOWN HEREON BY SYMBOL OR IN GREEN AS LOCAL ROADS ARE IN USE AND ARE UNDER THE JURISDICTION OF THE COUNTY ROAD COMMISSION



TOWNSHIP FRANKLIN
 SECTION 13 & 14 T. 20N. R. 3W.
 COUNTY CLARE

Prepared by
 MICHIGAN STATE HIGHWAY DEPARTMENT