

**LEGEND**

- COUNTY LINE
- CORPORATE LIMITS
- STATE TRUNKLINE
- COUNTY PRIMARY
- COUNTY LOCAL
- ADJACENT COUNTY
- CITY OR VILLAGE
- STREET

PRIMARY ROAD SYSTEM IS 11.04 MILES

LOCAL ROAD SYSTEM IS 28.71 MILES

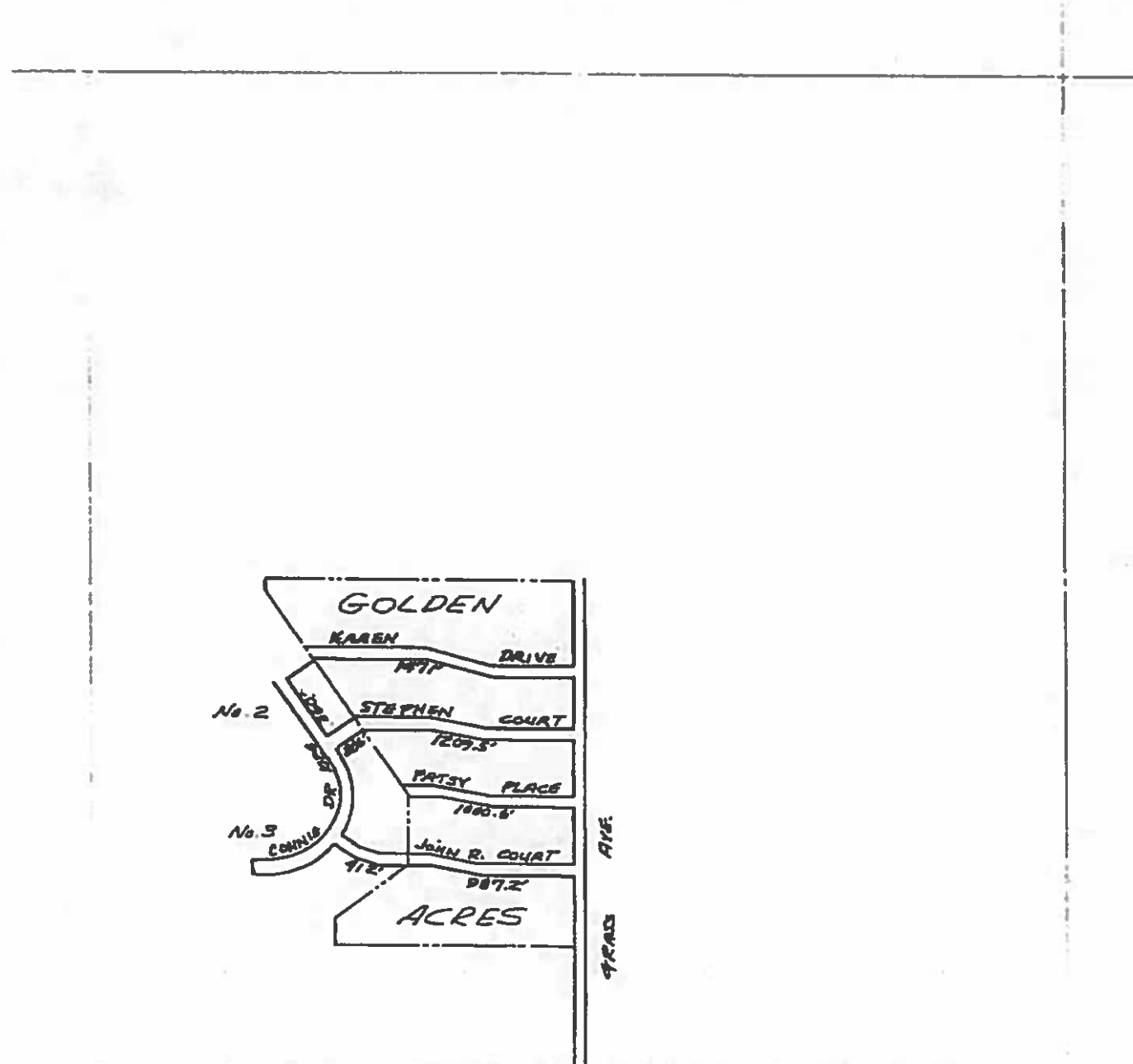
I HEREBY CERTIFY THAT THE ROADS SHOWN HEREON BY SYMBOL OR IN RED AS PRIMARY ROADS AND THOSE SHOWN HEREON BY SYMBOL OR IN GREEN AS LOCAL ROADS ARE IN USE AND ARE UNDER THE JURISDICTION OF THE COUNTY ROAD COMMISSION.

CHAIRMAN \_\_\_\_\_ DATE \_\_\_\_\_



SCALE 0  $\frac{1}{4}$  1 MILE  
One inch equals 300 feet

CLARE CO. T18N, R6W  
FREEMAN - 5



LEGEND

- COUNTY LINE
- CORPORATE LIMITS
- STATE TRUNKLINE
- COUNTY PRIMARY
- COUNTY LOCAL
- ADJACENT COUNTY
- CITY OR VILLAGE
- STREET

TOTAL FEET 6670 EQUALS 1.26 MILE

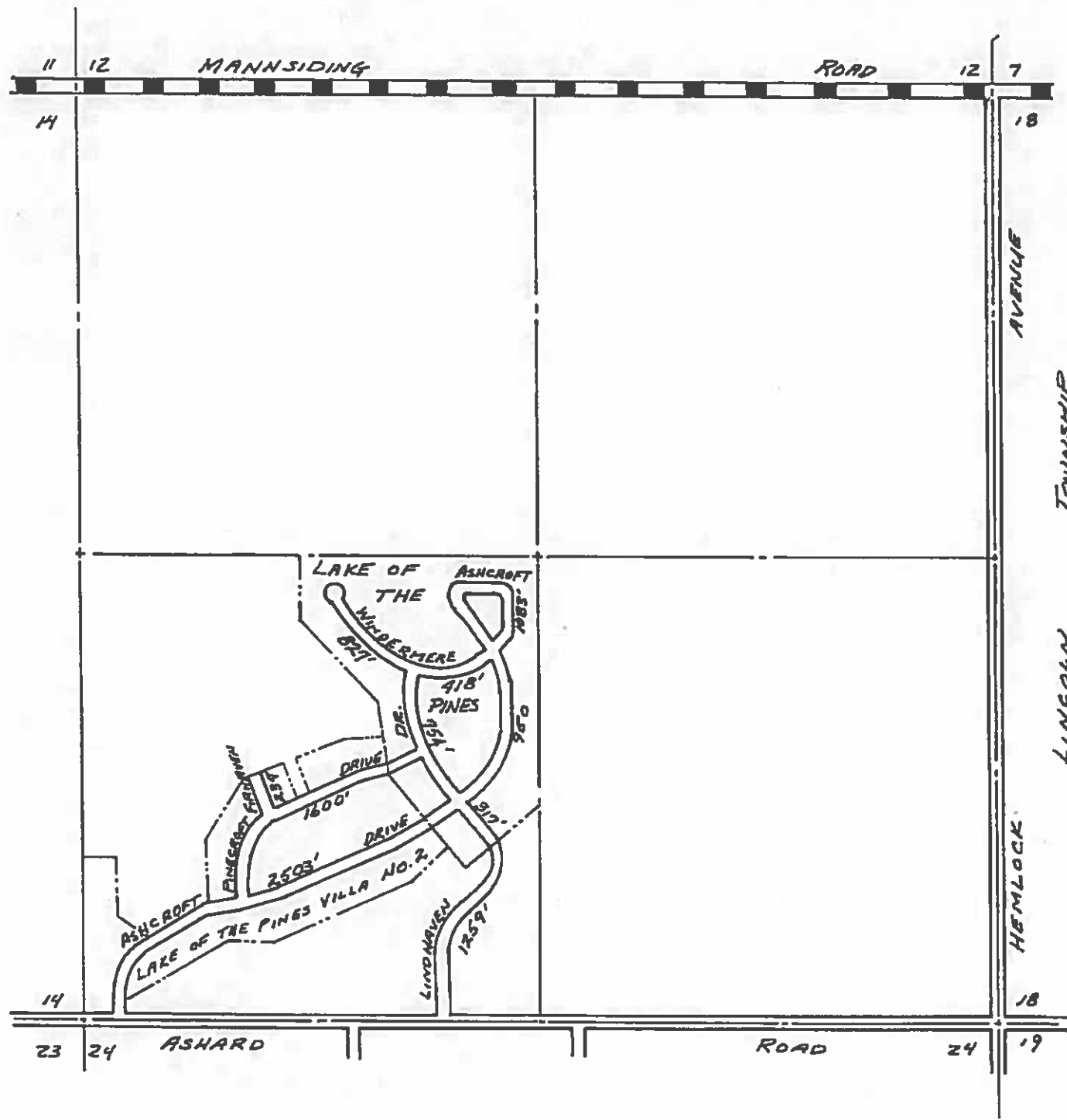
I HEREBY CERTIFY THAT THE ROADS SHOWN  
HEREON BY SYMBOL OR IN GREEN AS LOCAL  
ROADS ARE IN USE AND ARE UNDER THE  
JURISDICTION OF THE COUNTY ROAD COM-  
MISSION.

CHAIRMAN \_\_\_\_\_ DATE \_\_\_\_\_



SCALE 0 600 1200  
One inch equals 500 feet

TOWNSHIP FREEMAN T18N-R6W  
SECTION 2  
COUNTY CLARE



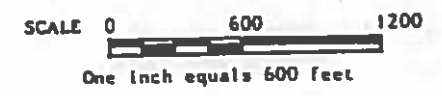
LEGEND

- COUNTY LINE
- CORPORATE LIMITS
- STATE TRUNKLINE
- COUNTY PRIMARY
- COUNTY LOCAL
- ADJACENT COUNTY
- CITY OR VILLAGE
- STREET

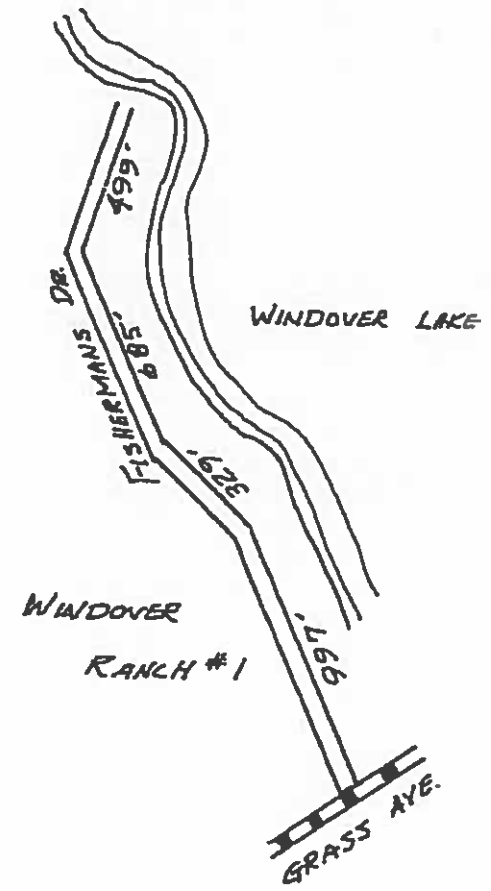
TOTAL FEET 9945 EQUALS 1.88 MILES









I HEREBY CERTIFY THAT THE ROADS SHOWN HEREON BY SYMBOL OR IN GREEN AS LOCAL ROADS ARE IN USE AND ARE UNDER THE JURISDICTION OF THE COUNTY ROAD COMMISSION.

CHAIRMAN \_\_\_\_\_ DATE \_\_\_\_\_



TOWNSHIP FREEMAN  
SECTION 13  
COUNTY CLARE



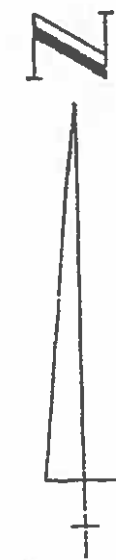
COUNTY LINE   
 CORPORATE LIMITS   
 STATE TRUNKLINE   
 COUNTY PRIMARY   
 COUNTY LOCAL   
 ADJACENT COUNTY   
 CITY OR VILLAGE   
 STREET 


TOTAL FEET 2510 EQUALS 0.48 MILE

I HEREBY CERTIFY THAT THE ROADS SHOWN  
 HEREON BY SYMBOL OR IN GREEN AS LOCAL  
 ROADS ARE IN USE AND ARE UNDER THE  
 JURISDICTION OF THE COUNTY ROAD COM.  
 MISSION.

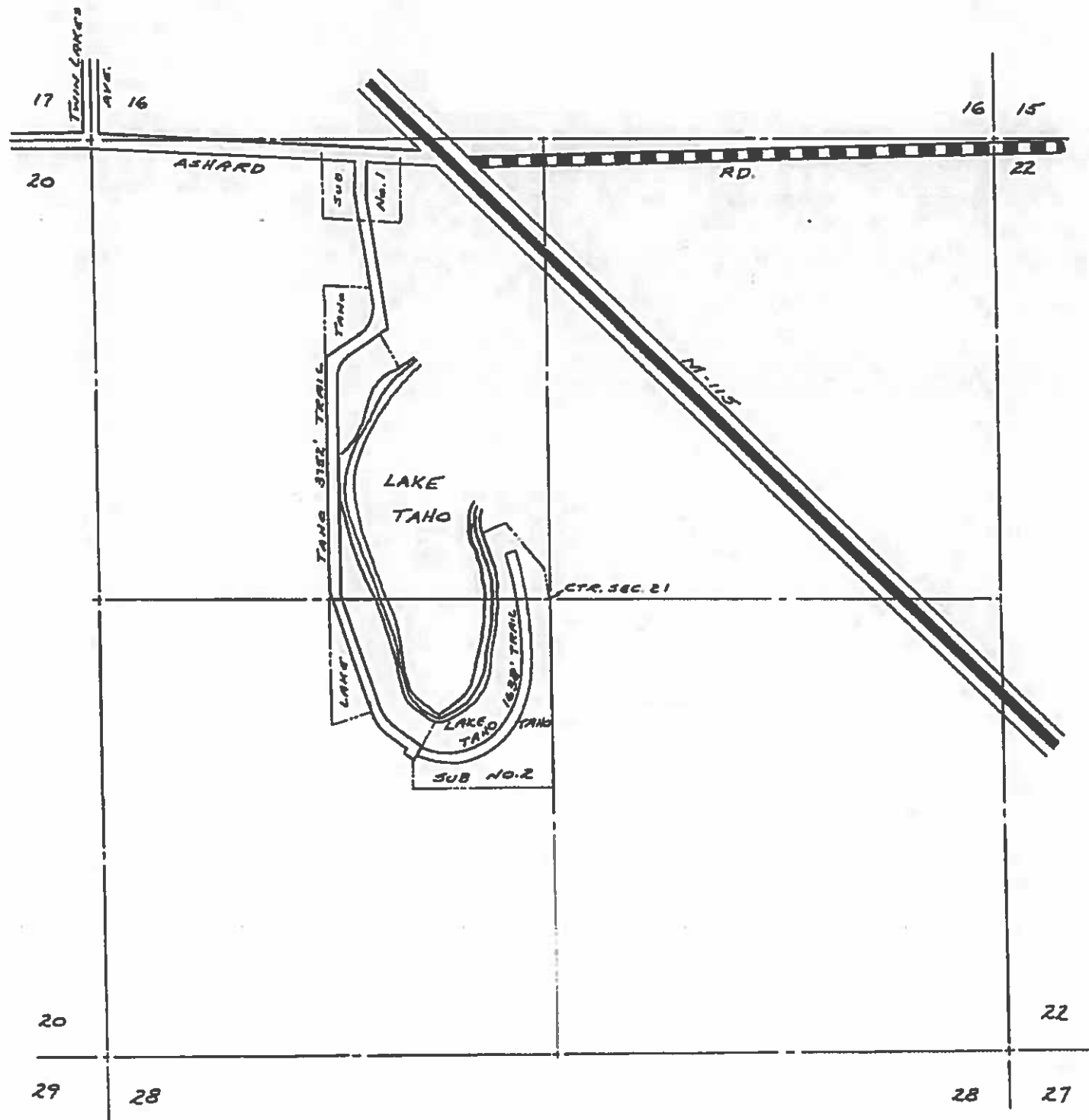
CHAIRMAN \_\_\_\_\_

DATE \_\_\_\_\_



SCALE 0  600 1200  
 One inch equals 600 feet

TOWNSHIP FREEMAN T18N-R6W  
 SECTION 14  
 COUNTY CLARE



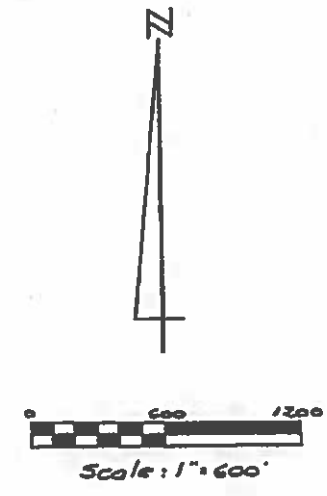
LEGEND

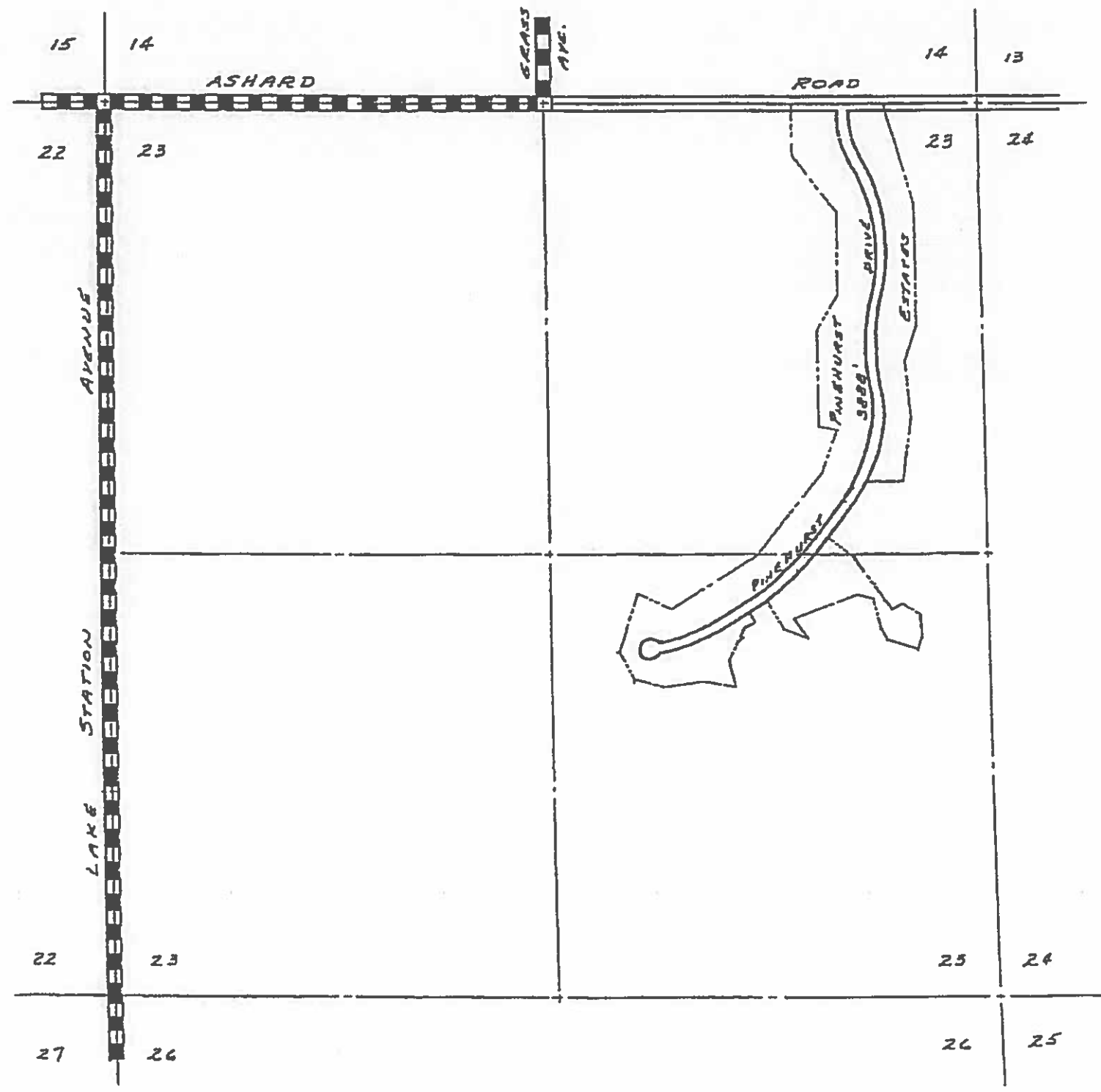
State Trunkline   
 County Primary   
 County Local 

Total Feet 5390 Miles 1.02




FREEMAN TOWNSHIP  
 T. 18 N., R. 6 W.  
 SECTION 21  
 CLARE COUNTY

Sheet 5-4



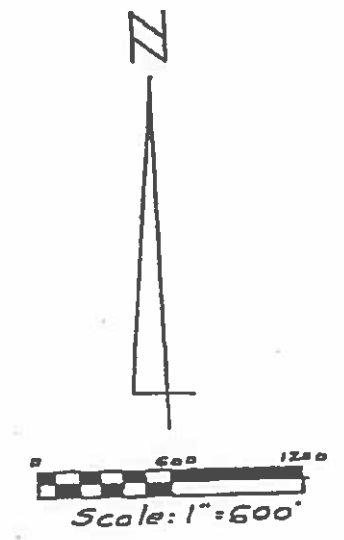


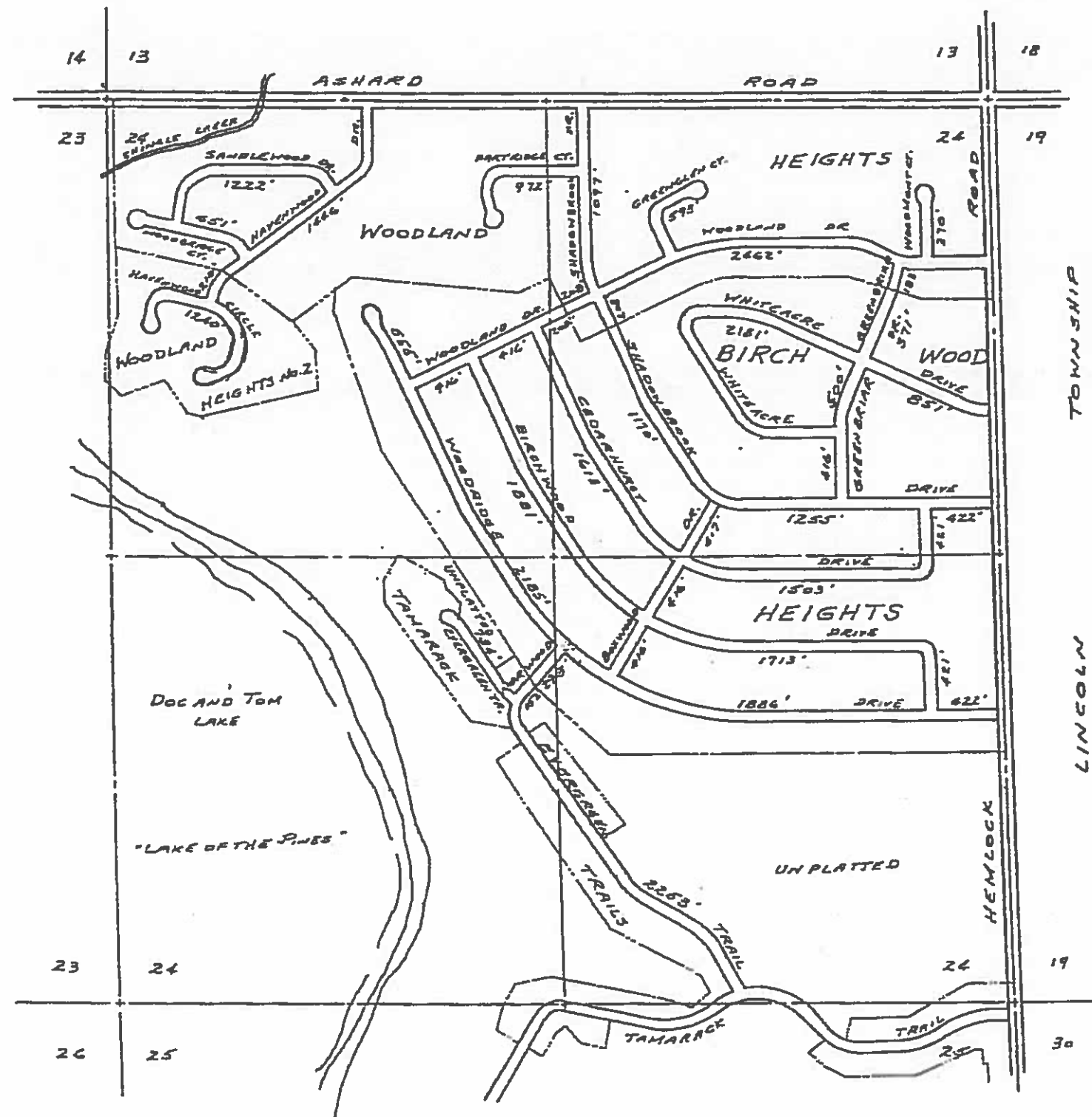
LEGEND

- STATE TRUNKLINE 
- COUNTY PRIMARY 
- COUNTY LOCAL 

Total Feet 3888 Miles 0.74

FREEMAN TOWNSHIP  
 T. 12 N., R. 6 W.  
 SECTION 23  
 CLARE COUNTY  
 Sheet 5 - 5



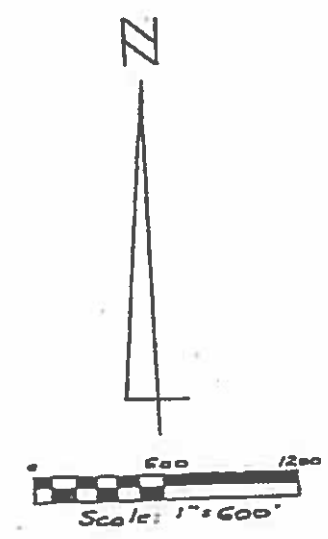


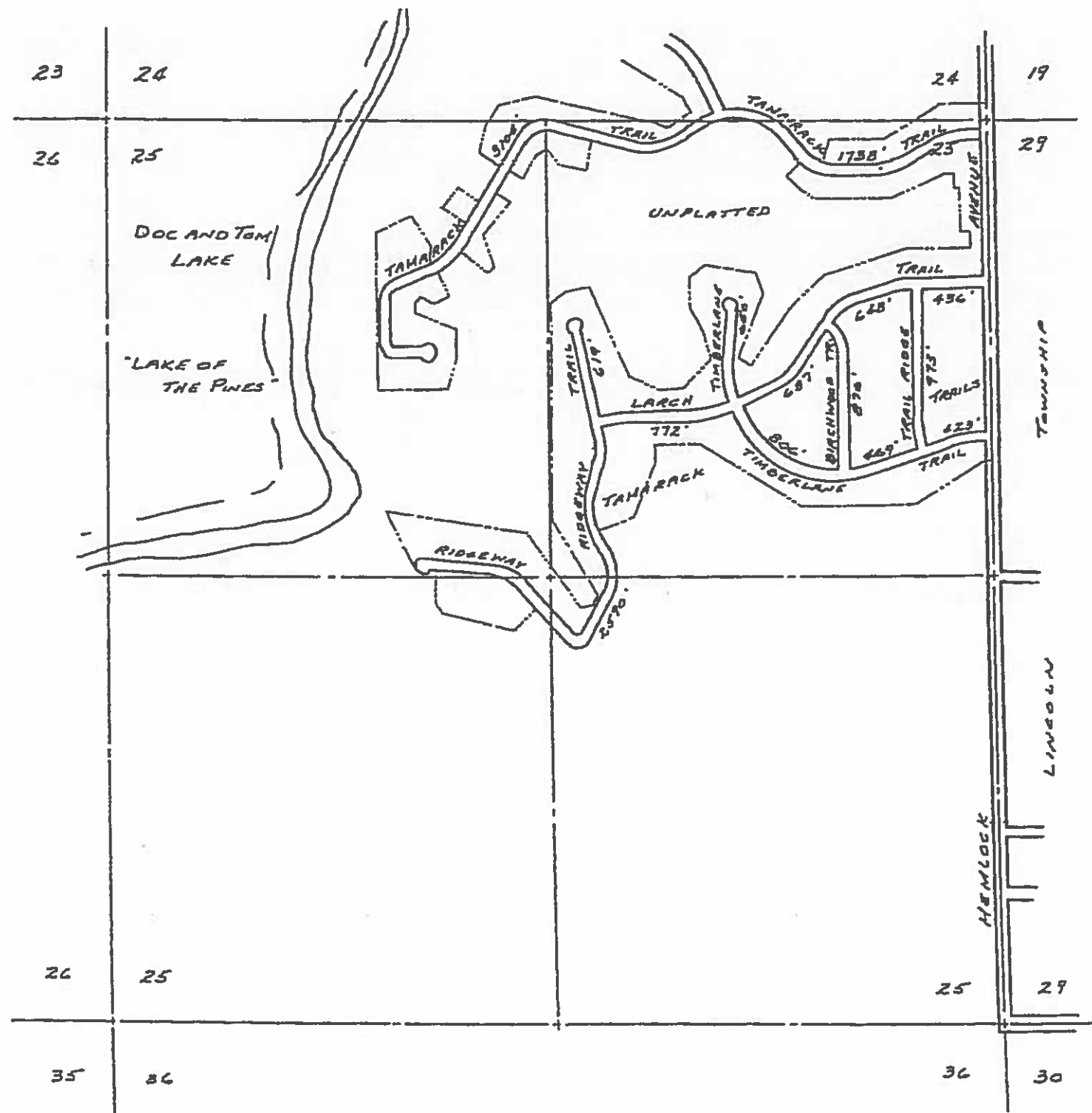
LEGEND

STATE TRUNKLINE	
COUNTY PRIMARY	
COUNTY LOCAL	




Total Feet 36,349 Miles 6.88

FREEMAN TOWNSHIP  
 T. 16 N., R. 6 W.  
 SECTION 24  
 CLARE COUNTY  
 Sheet 5-6





LEGEND

- STATE TRUNKLINE 
- COUNTY PRIMARY 
- COUNTY LOCAL 

Total Feet 14791 Miles 2.80

FREEMAN TOWNSHIP  
 T. 18 N., R. 6 W.  
 SECTION 25  
 CLARE COUNTY  
 Sheet 5 - 7

