

LEGEND

- COUNTY LINE
- CORPORATE LIMITS
- STATE TRUNKLINE
- COUNTY PRIMARY
- COUNTY LOCAL
- ADJACENT COUNTY
- CITY OR VILLAGE
- STREET

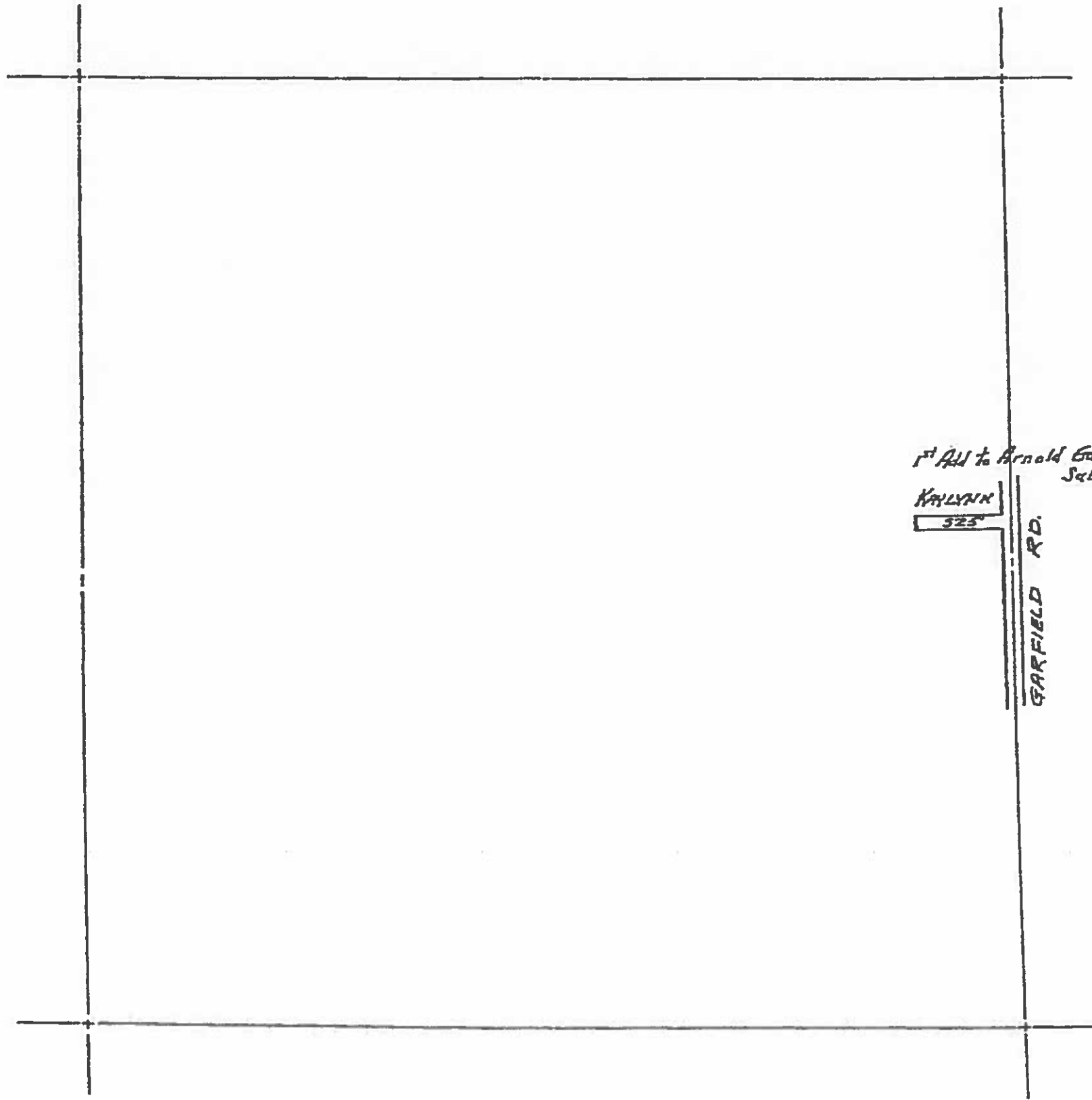
PRIMARY ROAD SYSTEM IS 17.56 MILES  
 LOCAL ROAD SYSTEM IS 35.52 MILES

I HEREBY CERTIFY THAT THE ROADS SHOWN HEREON BY SYMBOL OR IN RED AS PRIMARY ROADS AND THOSE SHOWN HEREON BY SYMBOL OR IN GREEN AS LOCAL ROADS ARE IN USE AND ARE UNDER THE JURISDICTION OF THE COUNTY ROAD COMMISSION

\_\_\_\_\_  
 CHAIRMAN                      DATE



SCALE 0      1/2      1 MILE  
  
 One inch equals 3000 feet



LEGEND

- COUNTY LINE
- CORPORATE LIMITS
- STATE TRUNKLINE
- COUNTY PRIMARY
- COUNTY LOCAL
- ADJACENT COUNTY
- CITY OR VILLAGE
- STREET

TOTAL FEET 525 EQUALS 0.10 Miles

I HEREBY CERTIFY THAT THE ROADS SHOWN HEREON BY SYMBOL OR IN GREEN AS LOCAL ROADS ARE IN USE AND ARE UNDER THE JURISDICTION OF THE COUNTY ROAD COMMISSION.

CHAIRMAN \_\_\_\_\_ DATE \_\_\_\_\_

*1st Add to Arnold Grumble Subd.*

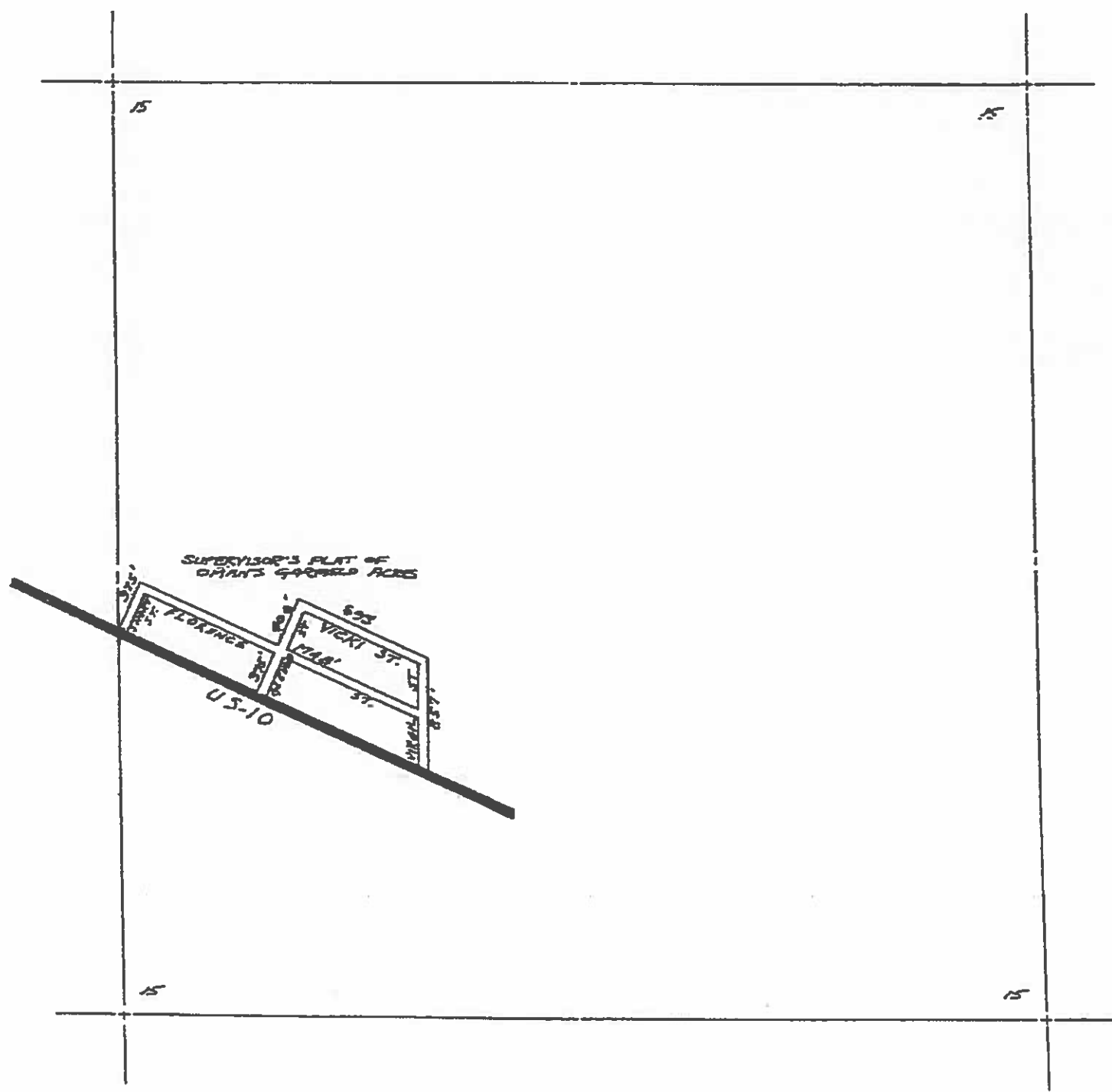
*KAYLYNN*  
*525*

*GARFIELD RD.*



SCALE 0 600 1200  
One inch equals 600 feet

TOWNSHIP T17N, R6W  
SECTION 6  
COUNTY CLARE



LEGEND

- COUNTY LINE
- CORPORATE LIMITS
- STATE TRUNKLINE
- COUNTY PRIMARY
- COUNTY LOCAL
- ADJACENT COUNTY
- CITY OR VILLAGE
- STREET

TOTAL FEET 448' EQUALS 0.84 Miles

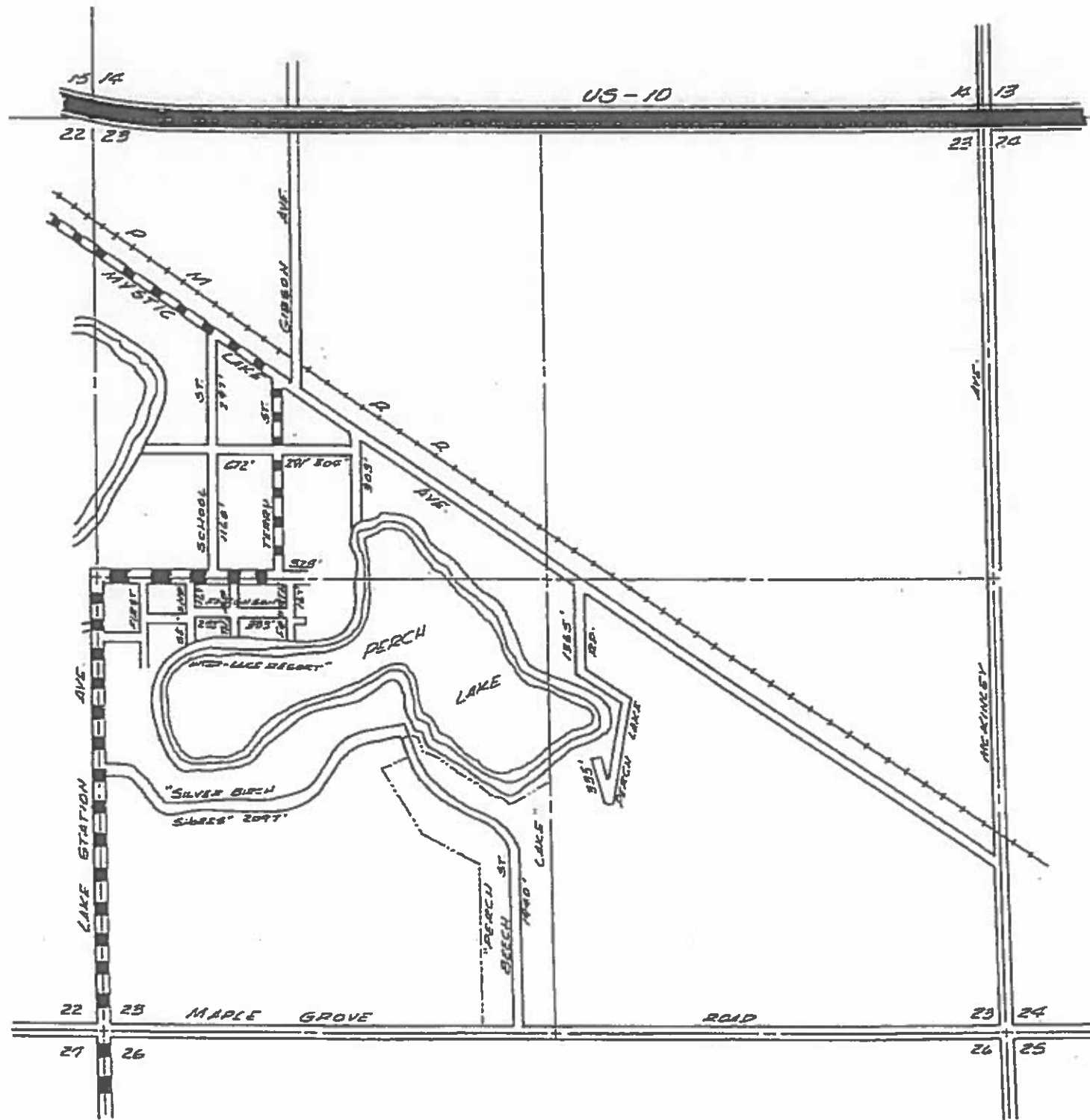
I HEREBY CERTIFY THAT THE ROADS SHOWN  
HEREON BY SYMBOL OR IN GREEN AS LOCAL  
ROADS ARE IN USE AND ARE UNDER THE  
JURISDICTION OF THE COUNTY ROAD COM-  
MISSION.

CHAIRMAN \_\_\_\_\_ DATE \_\_\_\_\_







SCALE 0 600 1200  
One inch equals 600 feet

TOWNSHIP T17N. R6W  
SECTION 15  
COUNTY CLARE



LEGEND

- STATE TRUNKLINE 
- COUNTY PRIMARY 
- COUNTY LOCAL 
- RAILROADS 

TOTAL FEET 10,060 MILES 1.91

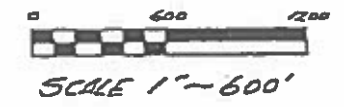
GARFIELD TOWNSHIP

T17N R6W

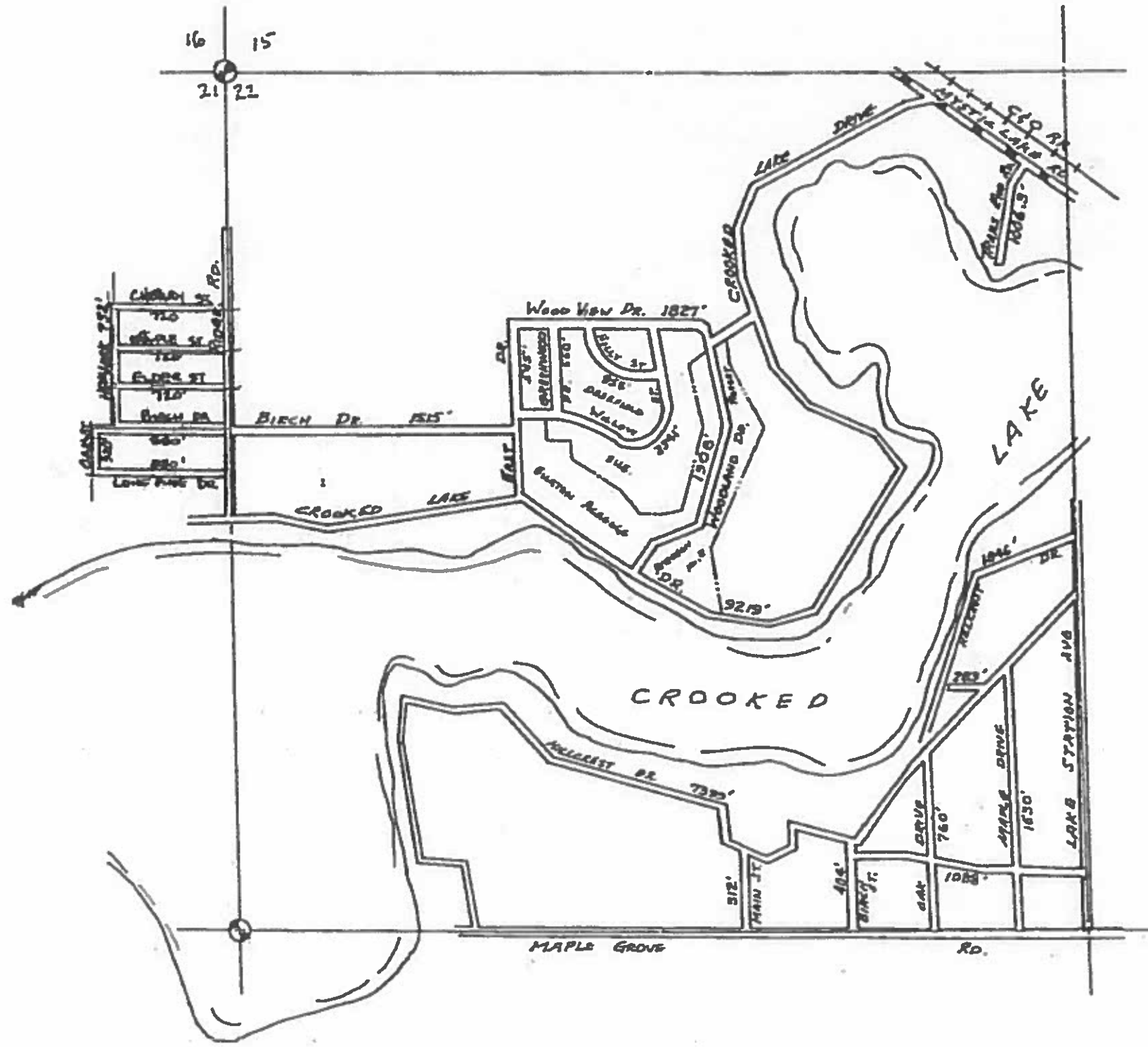
SECTION 23

CLARE COUNTY

SHEET 1-5







LEGEND

COUNTY LINE	-----
CORPORATE LIMITS	-----
STATE TRUNKLINE	=====
COUNTY PRIMARY	=====
COUNTY LOCAL	=====
ADJACENT COUNTY	=====
CITY OR VILLAGE STREET	=====

TOTAL FEET 38,683 EQUALS 7.33 MILE.

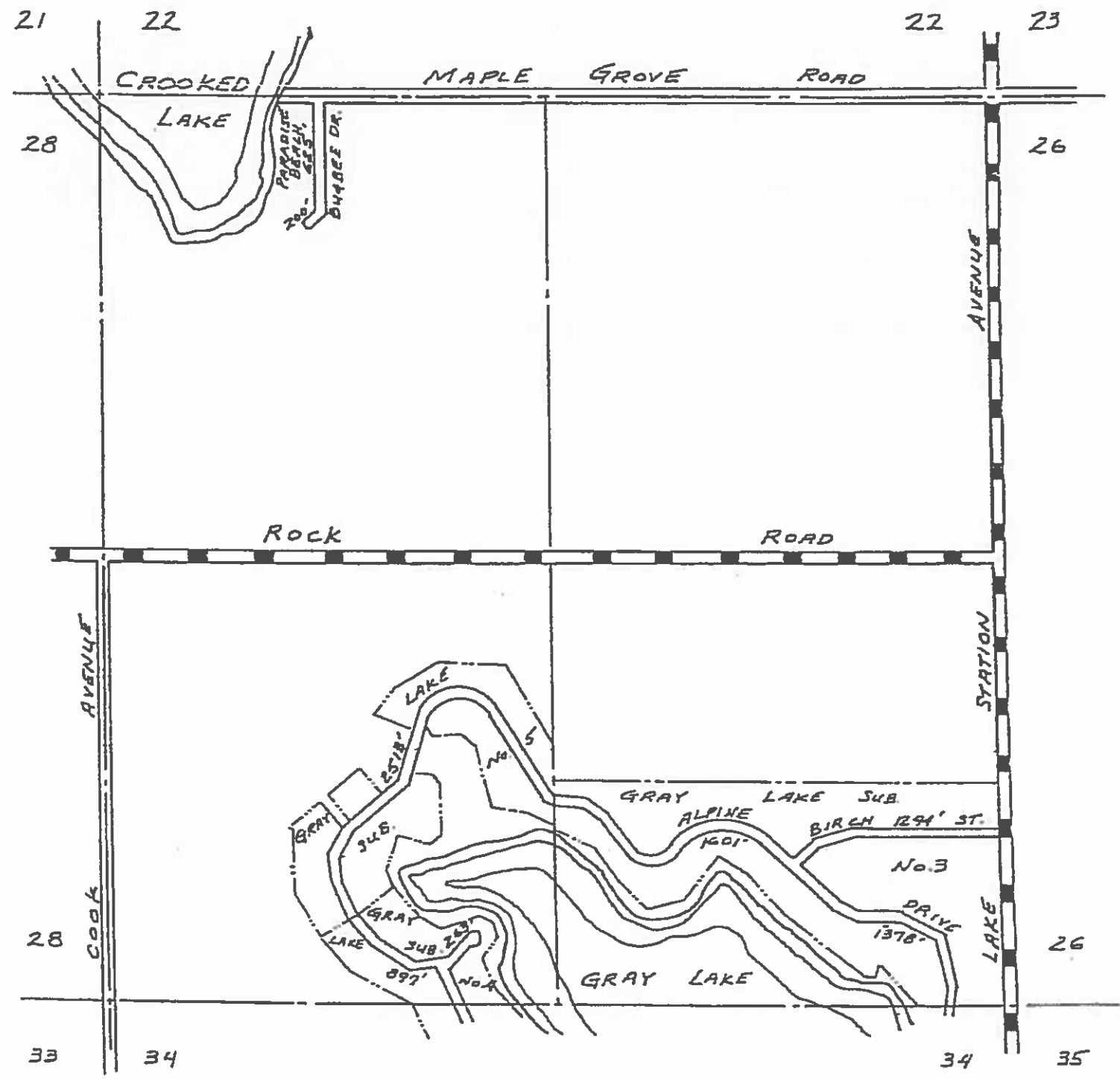
I HEREBY CERTIFY THAT THE BOARDS SHOWN HEREON BY SYMBOL OR IN GREEN AS LOCAL ROADS ARE IN USE AND ARE UNDER THE JURISDICTION OF THE COUNTY ROAD COMMISSION.

CHAIRMAN \_\_\_\_\_ DATE \_\_\_\_\_



SCALE 0 600 1200  
One inch equals 600 feet

TOWNSHIP Garfield  
SECTION 21/22 T11N-R6W  
COUNTY Clare



LEGEND

- COUNTY LINE
- CORPORATE LIMITS
- STATE TRUNKLINE
- COUNTY PRIMARY
- COUNTY LOCAL
- ADJACENT COUNTY
- CITY OR VILLAGE
- STREET

TOTAL FEET 8771' EQUALS 1.66 MILES

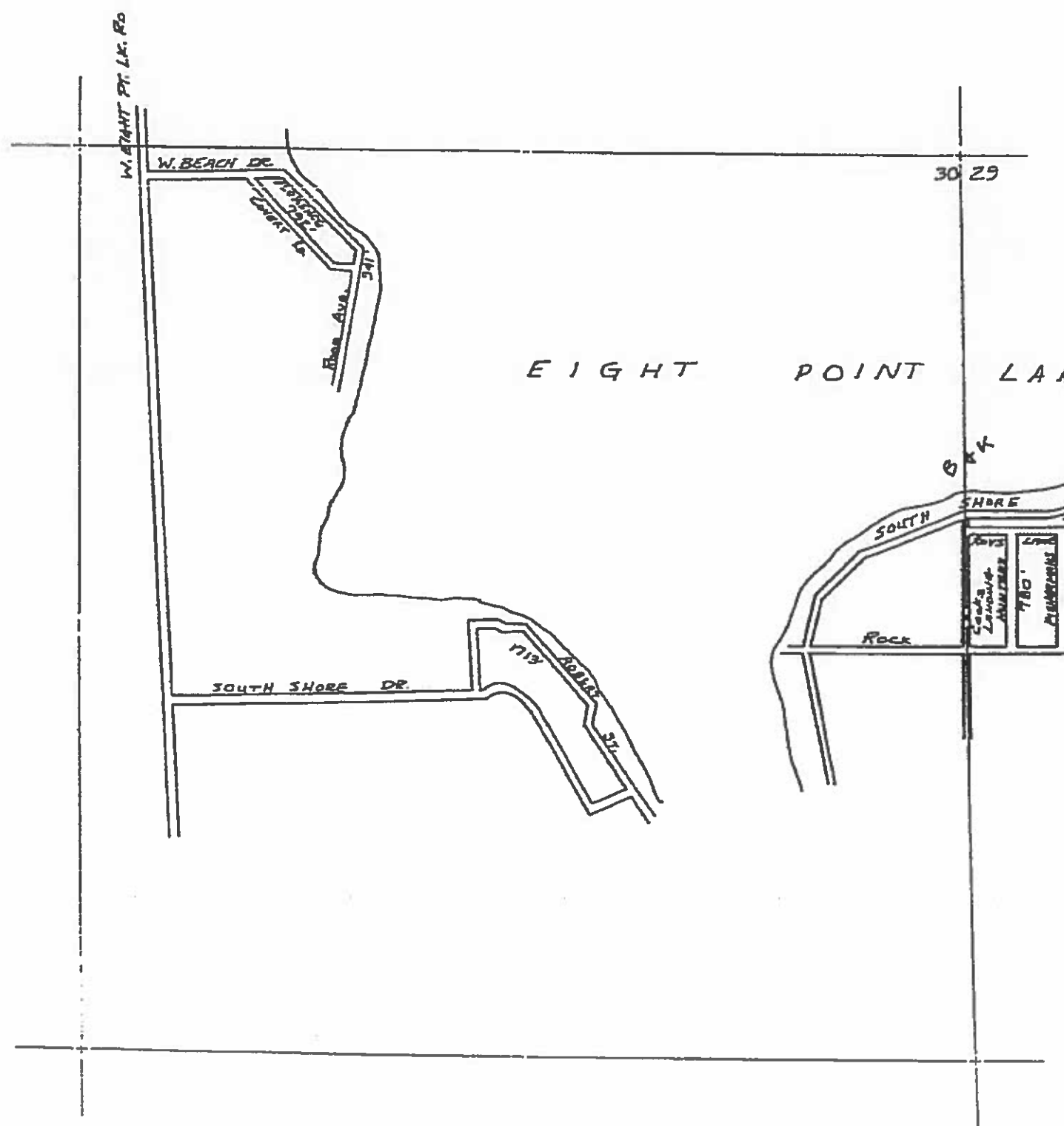
I HEREBY CERTIFY THAT THE ROADS SHOWN  
HEREON BY SYMBOL OR IN GREEN AS LOCAL  
ROADS ARE IN USE AND ARE UNDER THE  
JURISDICTION OF THE COUNTY ROAD COM-  
MISSION.

CHAIRMAN \_\_\_\_\_ DATE \_\_\_\_\_



SCALE 0 600 1200  
One inch equals 600 feet

TOWNSHIP GARFIELD  
SECTION 27  
COUNTY CLARE



EIGHT POINT LAKE

LEGEND

- COUNTY LINE
- CORPORATE LIMITS
- STATE TRUNKLINE
- COUNTY PRIMARY
- COUNTY LOCAL
- ADJACENT COUNTY
- CITY OR VILLAGE
- STREET

TOTAL FEET 6646 EQUALS 1.26 MILE

I HEREBY CERTIFY THAT THE ROADS SHOWN  
HEREON BY SYMBOL OR IN GREEN AS LOCAL  
ROADS ARE IN USE AND ARE UNDER THE  
JURISDICTION OF THE COUNTY ROAD COM-  
MISSION.

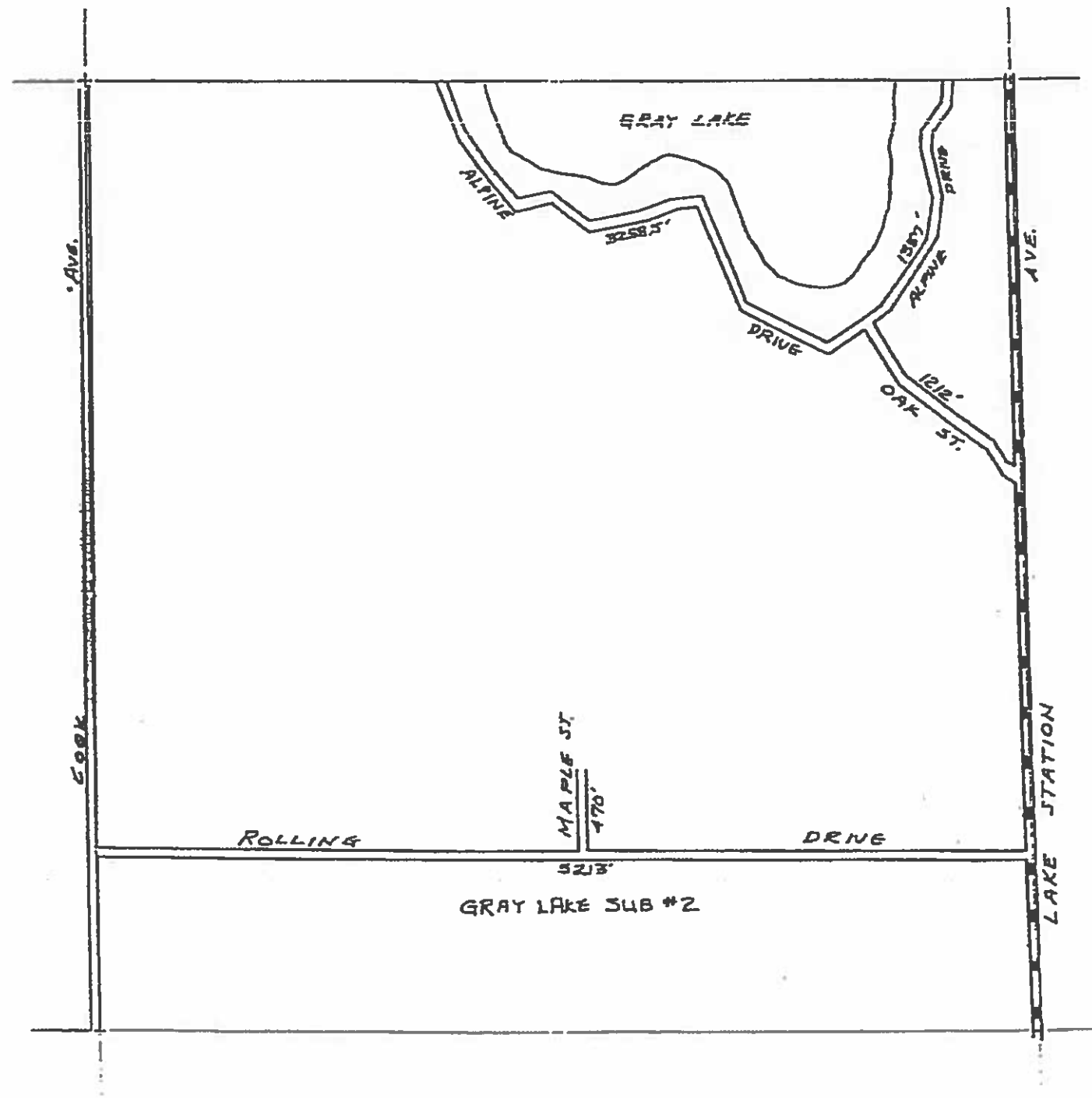
CHAIRMAN \_\_\_\_\_ DATE \_\_\_\_\_



SCALE 0 600 1200  
One inch equals 600 feet

TOWNSHIP GARFIELD  
SECTION 20 30 T17N-R6W  
COUNTY Clare





LEGEND

COUNTY LINE	-----
CORPORATE LIMITS	-----
STATE TRUNKLINE	=====
COUNTY PRIMARY	=====
COUNTY LOCAL	=====
ADJACENT COUNTY	=====
CITY OR VILLAGE STREET	=====

TOTAL FEET 11,510.5 EQUALS 2.18 MILE

I HEREBY CERTIFY THAT THE ROADS SHOWN HEREON BY SYMBOL OR IN GREEN AS LOCAL ROADS ARE IN USE AND ARE UNDER THE JURISDICTION OF THE COUNTY ROAD COMMISSION.

CHAIRMAN \_\_\_\_\_ DATE \_\_\_\_\_



SCALE 0 500 1200  
One inch equals 500 feet

TOWNSHIP GARFIELD  
SECTION 34 T11N-R6W  
COUNTY Clare