

LEGEND

COUNTY LINE

CORPORATE LIMITS

STATE TRUNKLINE

COUNTY PRIMARY

COUNTY LOCAL

ADJACENT COUNTY

CITY OR VILLAGE STREET

PRIMARY ROAD SYSTEM IS 13.09 MILES

LOCAL ROAD SYSTEM IS 52.00 MILES

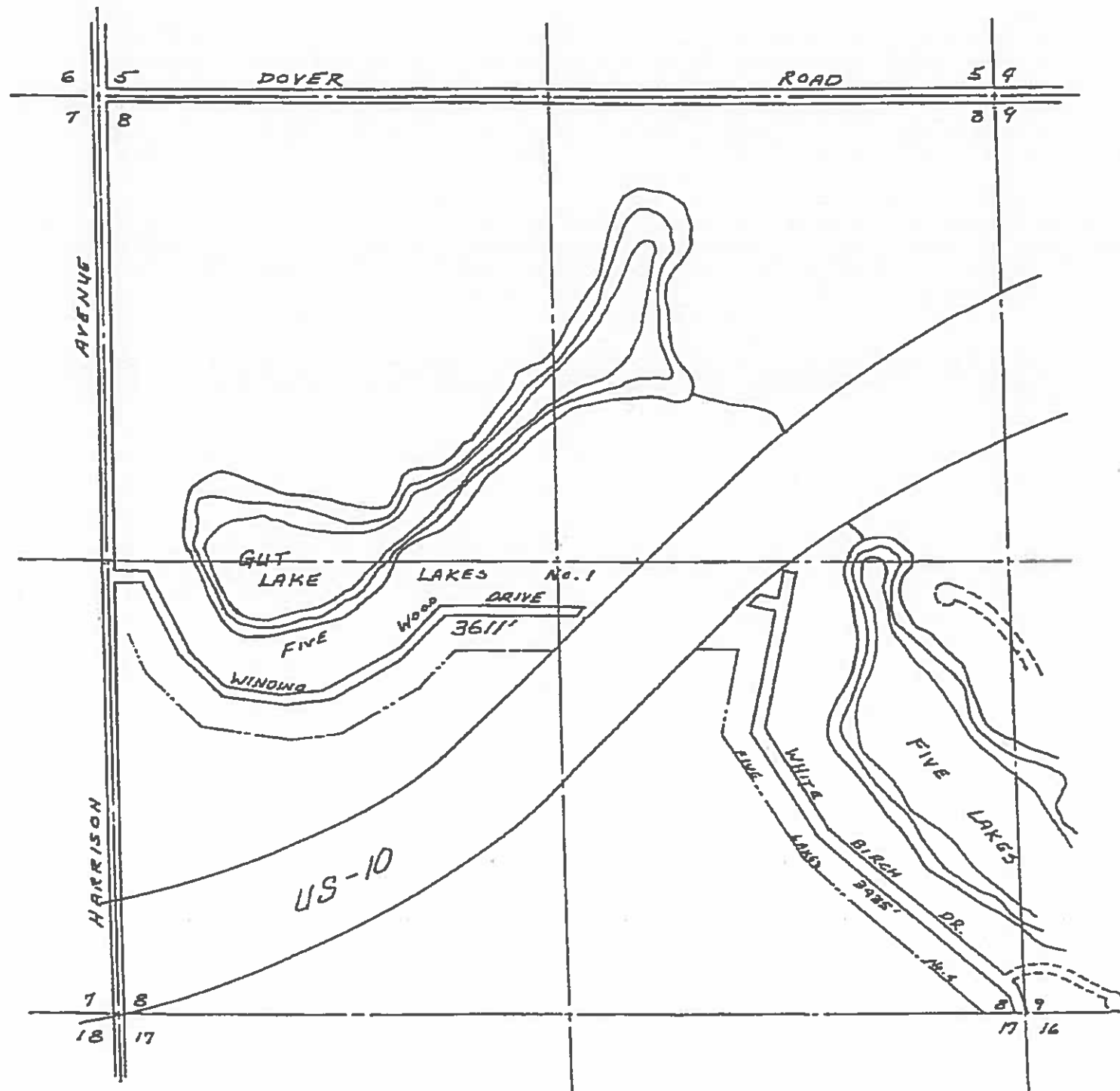
I HEREBY CERTIFY THAT THE ROADS SHOWN HEREON BY SYMBOL OR IN RED AS PRIMARY ROADS AND THOSE SHOWN HEREON BY SYMBOL OR IN GREEN AS LOCAL ROADS ARE IN USE AND ARE UNDER THE JURISDICTION OF THE COUNTY ROAD COMMISSION.

CHAIRMAN \_\_\_\_\_ DATE \_\_\_\_\_



SCALE 0 1 MILE  
One inch equals 300 feet

CLARE CO. T17N, R4W  
GRANT - 3



LEGEND

- COUNTY LINE
- CORPORATE LIMITS
- STATE TRUNKLINE
- COUNTY PRIMARY
- COUNTY LOCAL
- ADJACENT COUNTY
- CITY OR VILLAGE
- STREET

TOTAL FEET 7046 EQUALS 1.33 MILES

I HEREBY CERTIFY THAT THE ROADS SHOWN HEREON BY SYMBOL OR IN GREEN AS LOCAL ROADS ARE IN USE AND ARE UNDER THE JURISDICTION OF THE COUNTY ROAD COMMISSION.

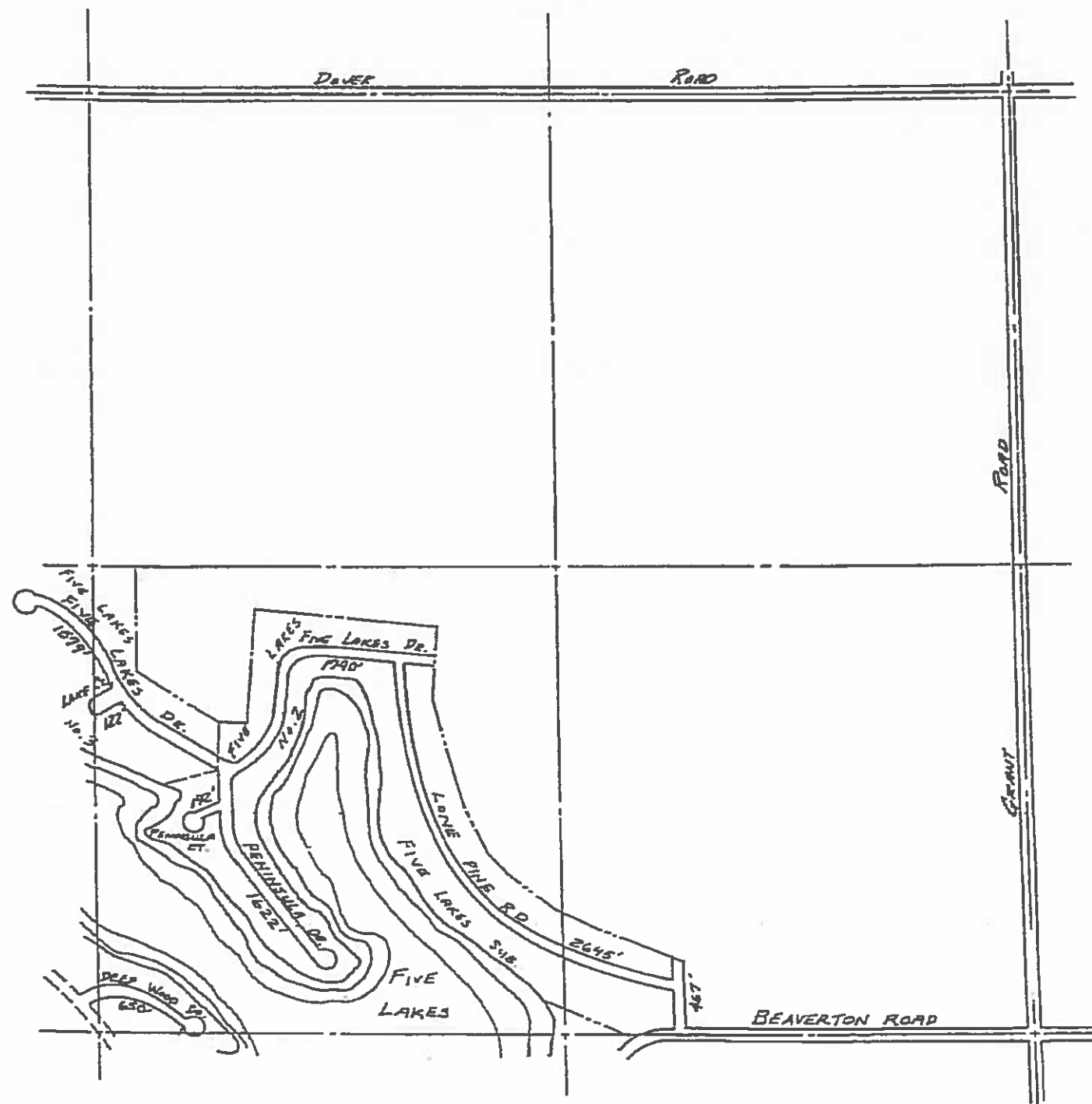
CHAIRMAN \_\_\_\_\_ DATE \_\_\_\_\_



SCALE 0 600 1200  

 One inch equals 600 feet

TOWNSHIP GRANT  
 SECTION 8  
 COUNTY CLARE



LEGEND

- COUNTY LINE
- CORPORATE LIMITS
- STATE TRUNKLINE
- COUNTY PRIMARY
- COUNTY LOCAL
- ADJACENT COUNTY
- CITY OR VILLAGE
- STREET

TOTAL FEET 9017 EQUALS 1.71 MILES

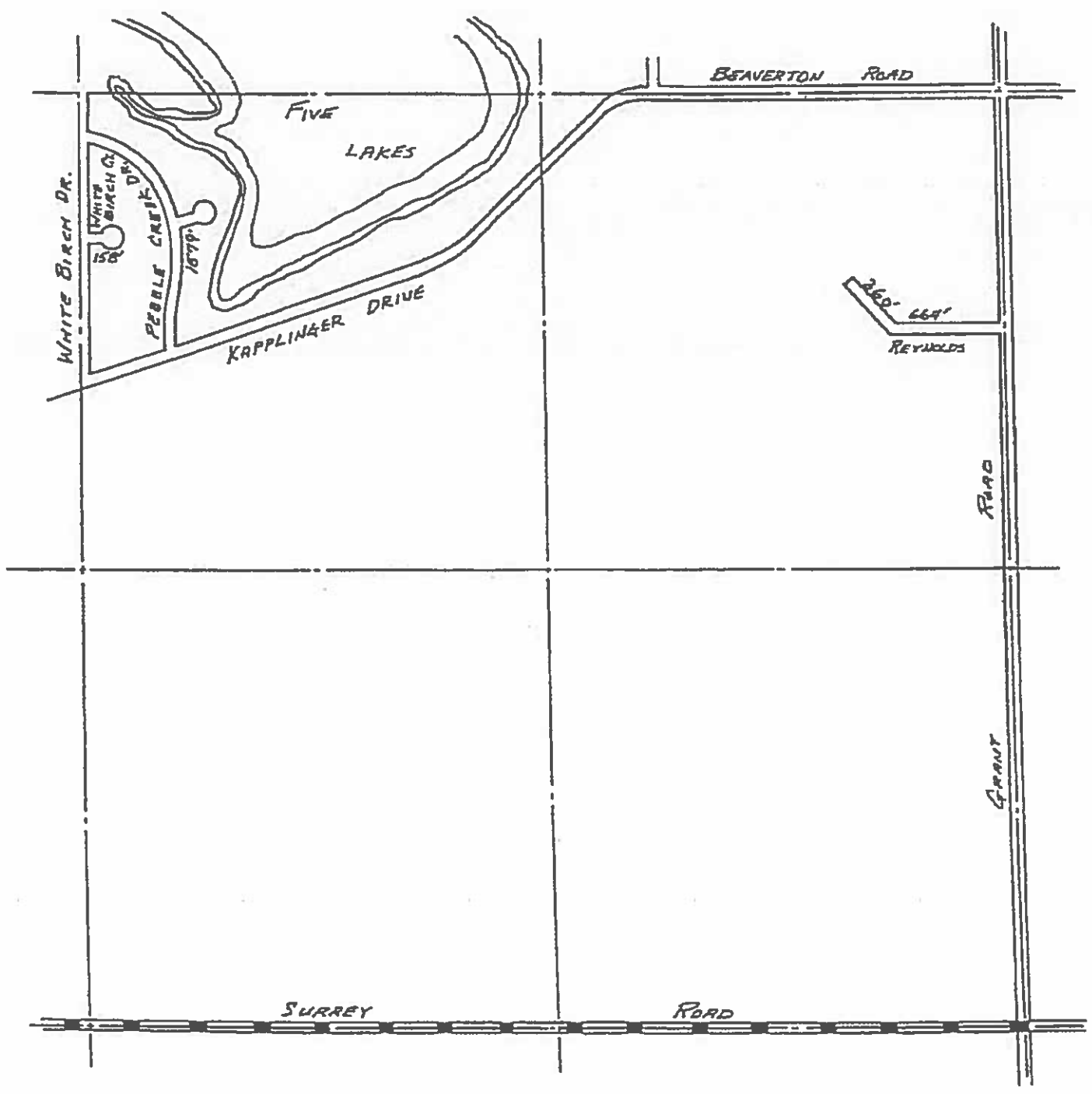
I HEREBY CERTIFY THAT THE ROADS SHOWN HEREON BY SYMBOL OR IN GREEN AS LOCAL ROADS ARE IN USE AND ARE UNDER THE JURISDICTION OF THE COUNTY ROAD COMMISSION.

CHAIRMAN \_\_\_\_\_ DATE \_\_\_\_\_



SCALE 0 600 1200  
One inch equals 600 feet

TOWNSHIP GRANT  
SECTION 9  
COUNTY CLARE



LEGEND

- COUNTY LINE
- CORPORATE LIMITS
- STATE TRUNKLINE
- COUNTY PRIMARY
- COUNTY LOCAL
- ADJACENT COUNTY
- CITY OR VILLAGE
- STREET

TOTAL FEET 2761 EQUALS 0.52 MILES

I HEREBY CERTIFY THAT THE ROADS SHOWN HEREON BY SYMBOL OR IN GREEN AS LOCAL ROADS ARE IN USE AND ARE UNDER THE JURISDICTION OF THE COUNTY ROAD COMMISSION.

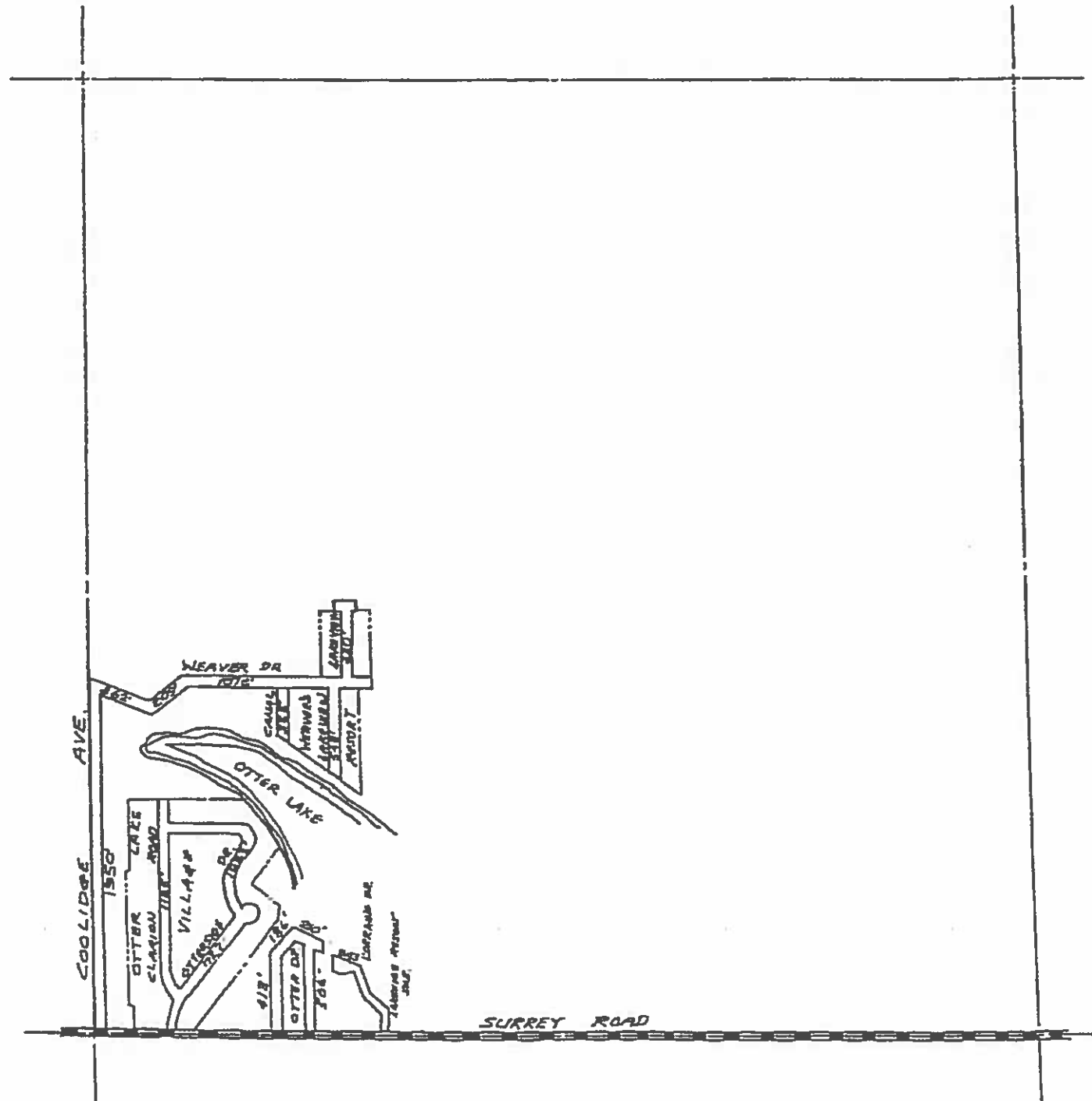
CHAIRMAN \_\_\_\_\_ DATE \_\_\_\_\_

N



SCALE 0 600 1200  
  
 One inch equals 600 feet

TOWNSHIP GRANT  
 SECTION 16  
 COUNTY CLARE



LEGEND

- COUNTY LINE
- CORPORATE LIMITS
- STATE TRUNKLINE
- COUNTY PRIMARY
- COUNTY LOCAL
- ADJACENT COUNTY
- CITY OR VILLAGE
- STREET

TOTAL FEET 9720' EQUALS 1.84 MILE FEET

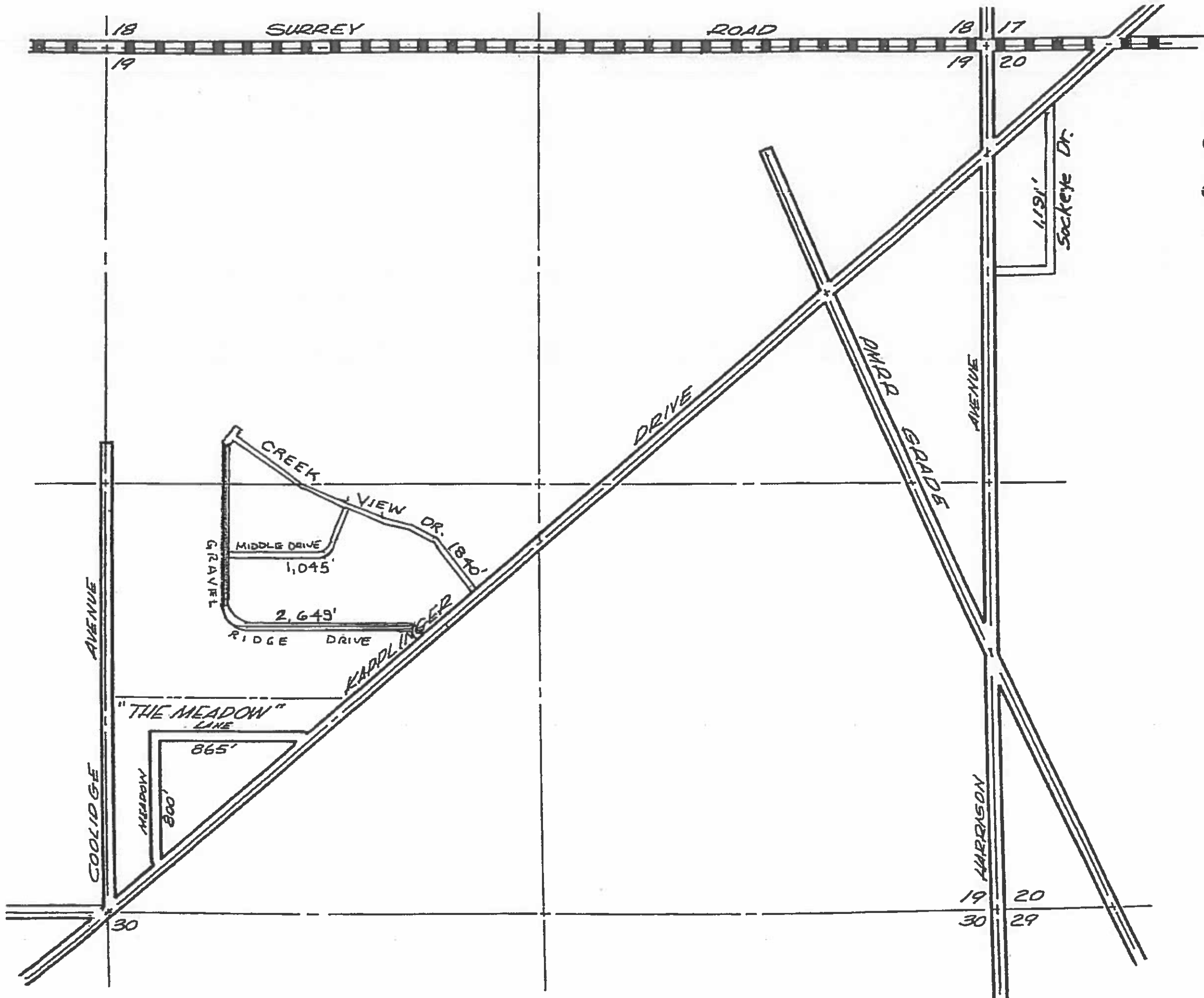
I HEREBY CERTIFY THAT THE ROADS SHOWN HEREON BY SYMBOL OR IN GREEN AS LOCAL ROADS ARE IN USE AND ARE UNDER THE JURISDICTION OF THE COUNTY ROAD COMMISSION.

CHAIRMAN \_\_\_\_\_ DATE \_\_\_\_\_



SCALE 0 600 1200  
One inch equals 600 feet

TOWNSHIP Grant  
SECTION 18 T17N R4W  
COUNTY Clare



LEGEND

- STATE TRUNKLINE
- COUNTY PRIMARY
- COUNTY LOCAL
- RAILROADS







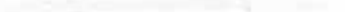

TOTAL FEET 8,390'  
 MILES 1.59

GRANT TWP.  
 T17N R4W  
 SECTION 19  
 CLARE COUNTY

SHEET 3-5



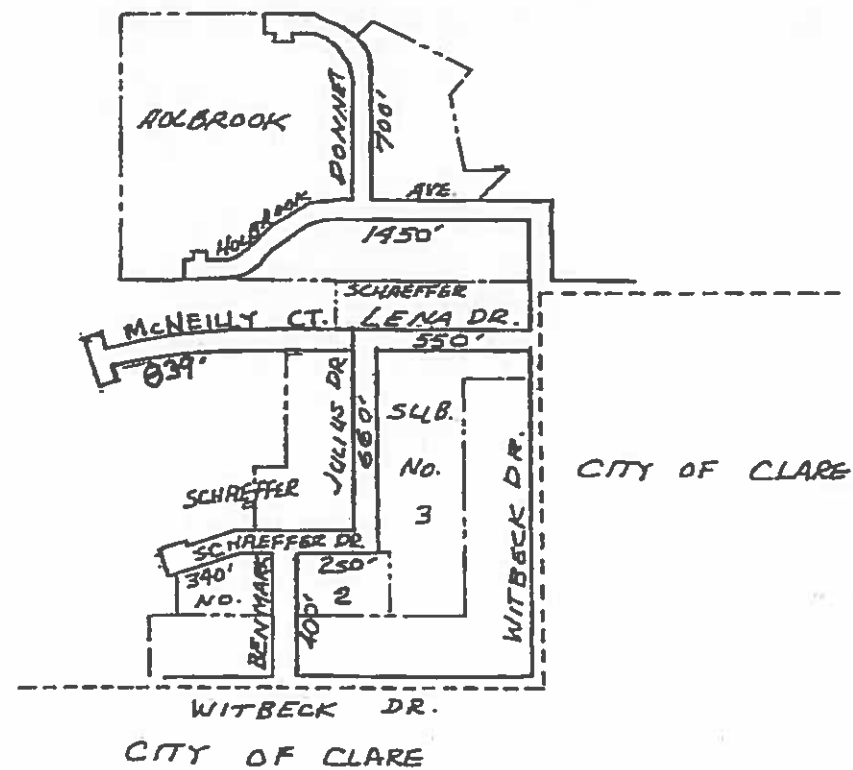
SCALE 1" ~ 600'


COUNTY LINE   
 CORPORATE LIMITS   
 STATE TRUNKLINE   
 COUNTY PRIMARY   
 COUNTY LOCAL   
 ADJACENT COUNTY   
 CITY OR VILLAGE   
 STREET 

TOTAL FEET 5189 EQUALS 0.98 MILE

I HEREBY CERTIFY THAT THE ROADS SHOWN  
 HEREON BY SYMBOL OR IN GREEN AS LOCAL  
 ROADS ARE IN USE AND ARE UNDER THE  
 JURISDICTION OF THE COUNTY ROAD COM.  
 MISSION.

CHAIRMAN \_\_\_\_\_ DATE \_\_\_\_\_



SCALE 0 600 1200  
  
 One inch equals 600 feet

TOWNSHIP GRANT T17N-R4W  
 SECTION 26  
 COUNTY CLARE

COUNTY LINE -----  
 CORPORATE LIMITS -----  
 STATE TRUNKLINE -----  
 COUNTY PRIMARY -----  
 COUNTY LOCAL -----  
 ADJACENT COUNTY -----  
 CITY OR VILLAGE -----  
 STREET -----

TOTAL FEET 1836 EQUALS 0.35 MILE

I HEREBY CERTIFY THAT THE ROADS SHOWN  
 HEREON BY SYMBOL OR IN GREEN AS LOCAL  
 ROADS ARE IN USE AND ARE UNDER THE  
 JURISDICTION OF THE COUNTY ROAD COM-  
 MISSION.

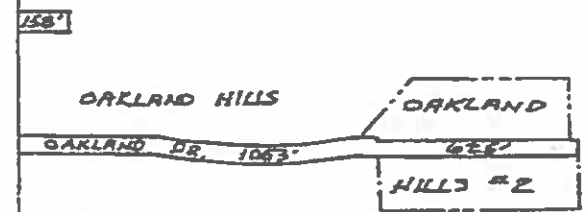
CHAIRMAN \_\_\_\_\_

DATE \_\_\_\_\_

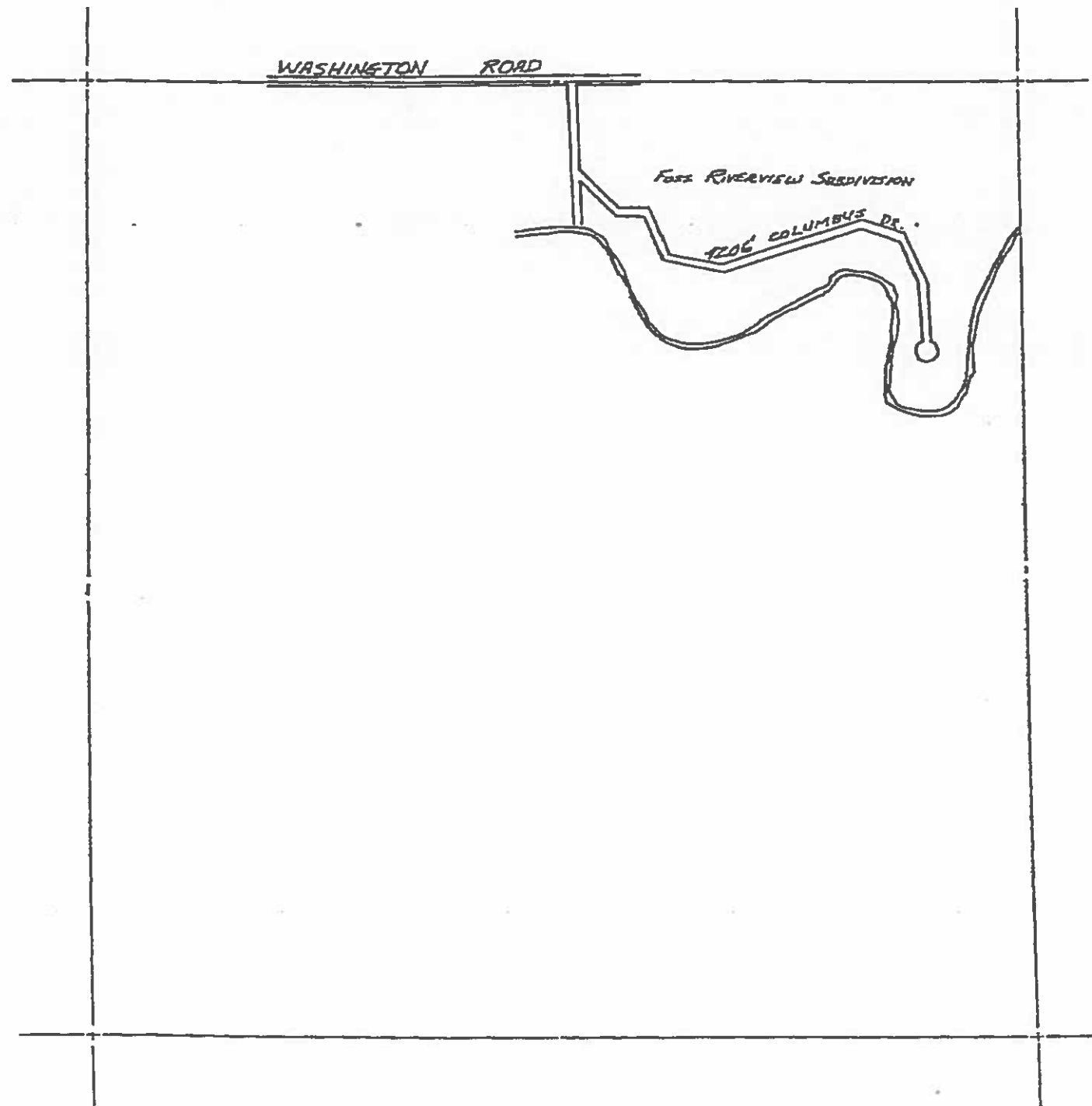


SCALE 0 600 1200  
 One inch equals 600 feet

TOWNSHIP GRANT T17N-R4W  
 SECTION 27  
 COUNTY CLARE







LEGEND

- COUNTY LINE
- CORPORATE LIMITS
- STATE TRUNKLINE
- COUNTY PRIMARY
- COUNTY LOCAL
- ADJACENT COUNTY
- CITY OR VILLAGE
- STREET

TOTAL FEET 4206' EQUALS 0.80 MILE

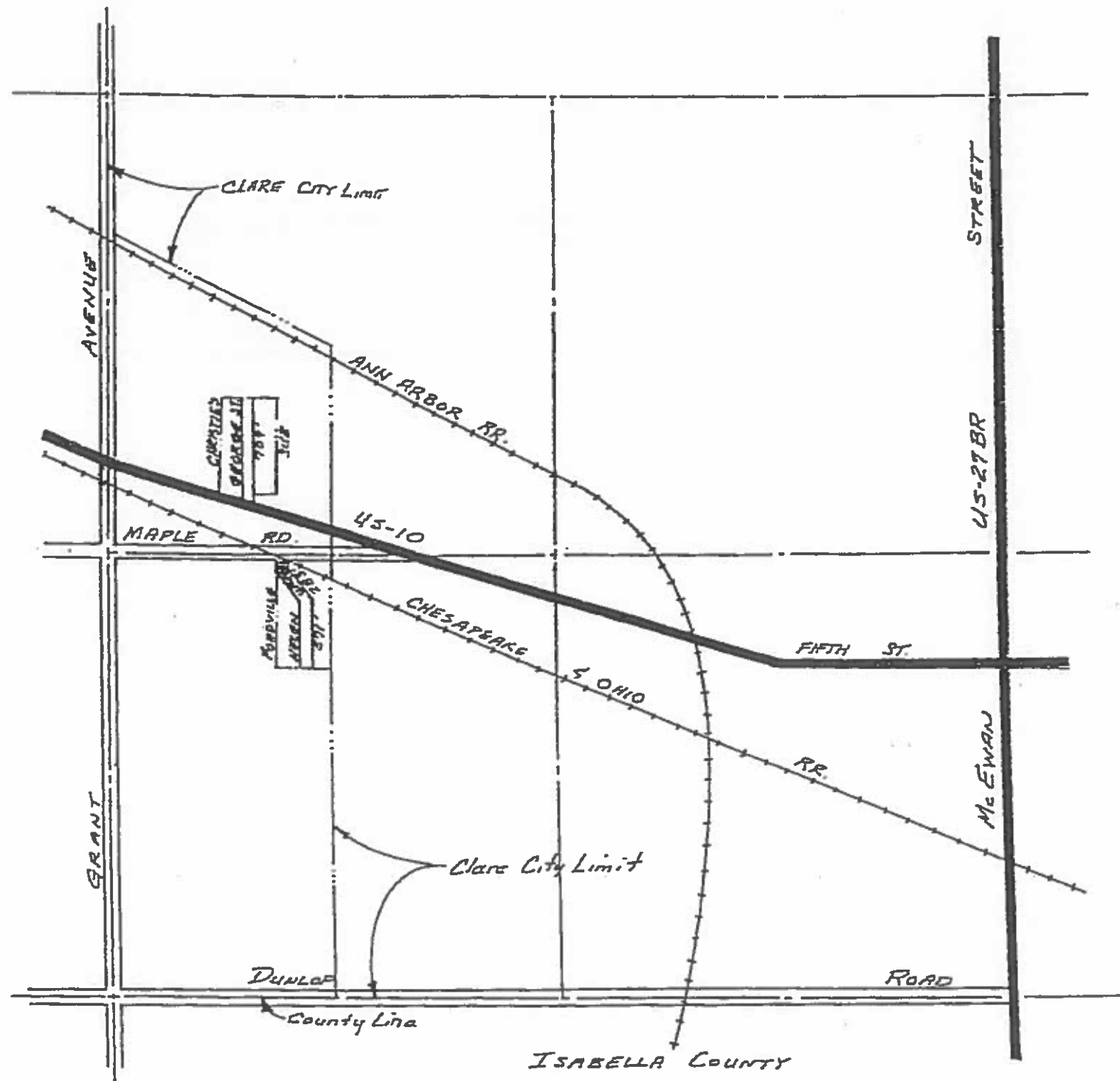
I HEREBY CERTIFY THAT THE ROADS SHOWN  
HEREON BY SYMBOL OR IN GREEN AS LOCAL  
ROADS ARE IN USE AND ARE UNDER THE  
JURISDICTION OF THE COUNTY ROAD COM-  
MISSION.

CHAIRMAN \_\_\_\_\_ DATE \_\_\_\_\_



SCALE 0 600 1200  
One inch equals 600 feet

TOWNSHIP Grant  
 SECTION 32 T17N R4W  
 COUNTY Clare



LEGEND

- COUNTY LINE
- CORPORATE LIMITS
- STATE TRUNKLINE
- COUNTY PRIMARY
- COUNTY LOCAL
- ADJACENT COUNTY
- CITY OR VILLAGE
- STREET

TOTAL FEET 1563 EQUALS 0.30 MILES

I HEREBY CERTIFY THAT THE ROADS SHOWN HEREON BY SYMBOL OR IN GREEN AS LOCAL ROADS ARE IN USE AND ARE UNDER THE JURISDICTION OF THE COUNTY ROAD COMMISSION.

CHAIRMAN \_\_\_\_\_ DATE \_\_\_\_\_



SCALE 0 600 1200  
One inch equals 600 feet

TOWNSHIP GRANT  
SECTION 34  
COUNTY CLARE