

COUNTY LINE _____
 CORPORATE LIMITS _____
 STATE TRUNKLINE _____
 COUNTY PRIMARY _____
 COUNTY LOCAL _____
 ADJACENT COUNTY _____
 CITY OR VILLAGE _____
 STREET _____

PRIMARY ROAD SYSTEM IS 14.96 MILES

LOCAL ROAD SYSTEM IS 36.54 MILES

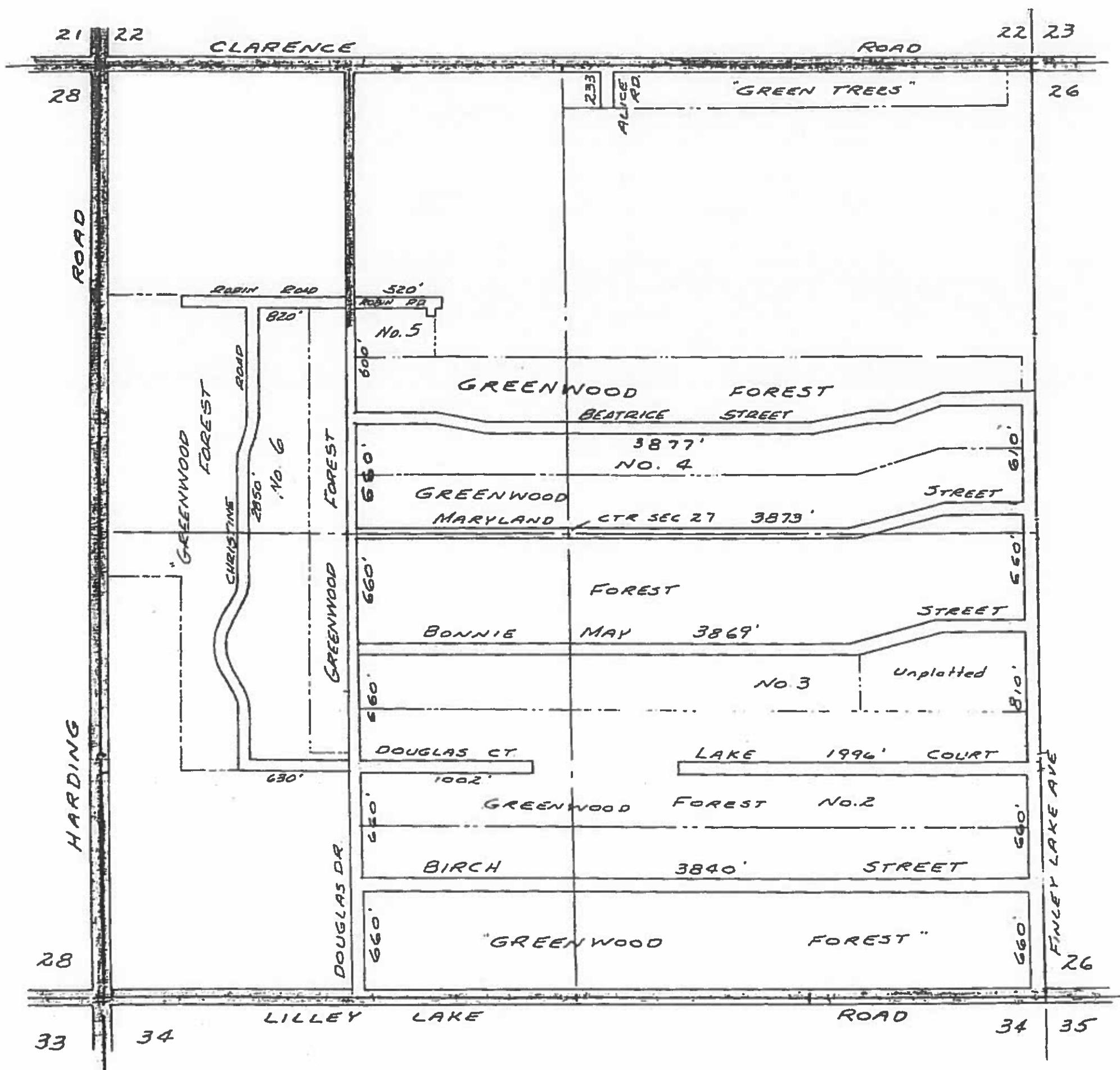
I HEREBY CERTIFY THAT THE ROADS SHOWN
 HEREON BY SYMBOL OR IN RED AS PRIMARY
 ROADS AND THOSE SHOWN HEREON BY SYMBOL
 OR IN GREEN AS LOCAL ROADS ARE IN USE
 AND ARE UNDER THE JURISDICTION OF THE
 COUNTY ROAD COMMISSION

CHAIRMAN _____ DATE _____



SCALE 0 1 MILE
 One inch equals 3000 feet

CLARE CO. T19N, R5W
 GREENWOOD - 10 10



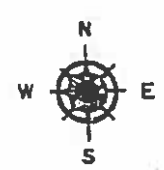
LEGEND

- COUNTY LINE
- CORPORATE LIMITS
- STATE TRUNKLINE
- COUNTY PRIMARY
- COUNTY LOCAL
- ADJACENT COUNTY
- CITY OR VILLAGE STREET

TOTAL FEET 30,810 EQUALS 5.83 MILES

I HEREBY CERTIFY THAT THE ROADS SHOWN HEREON BY SYMBOL OR IN GREEN AS LOCAL ROADS ARE IN USE AND ARE UNDER THE JURISDICTION OF THE COUNTY ROAD COMMISSION

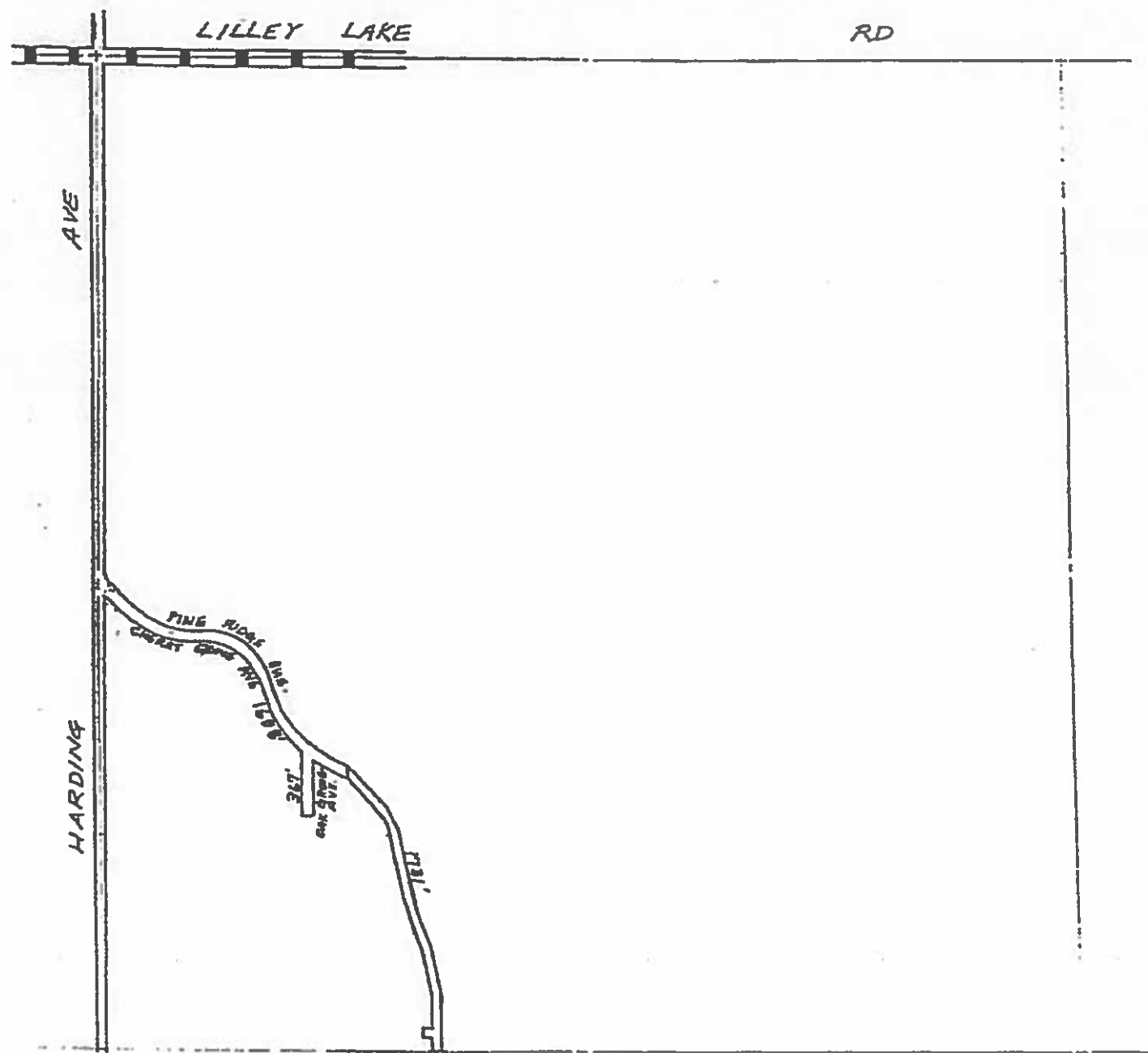
CHAIRMAN DATE



SCALE 0 500 1200 FT
ONE INCH EQUALS 600 FEET

TOWNSHIP T19N R5W
SECTION 27
GREENWOOD
10-1

10-1



LEGEND

- COUNTY LINE
- CORPORATE LIMITS
- STATE TRUNKLINE
- COUNTY PRIMARY
- COUNTY LOCAL
- ADJACENT COUNTY
- CITY OR VILLAGE STREET

TOTAL FEET 3796 EQUALS 0.72 MILE

I HEREBY CERTIFY THAT THE ROADS SHOWN HEREON BY SYMBOL OR IN GREEN AS LOCAL ROADS ARE IN USE AND ARE UNDER THE JURISDICTION OF THE COUNTY ROAD COMMISSION.

CHAIRMAN _____ DATE _____



SCALE 0 600 1200
One inch equals 600 feet

TOWNSHIP GREENWOOD
SECTION 24 TISH RSW
COUNTY CLATSOP