

LEGEND

COUNTY LINE

CORPORATE LIMITS

STATE TRUNKLINE

COUNTY PRIMARY

COUNTY LOCAL

ADJACENT COUNTY

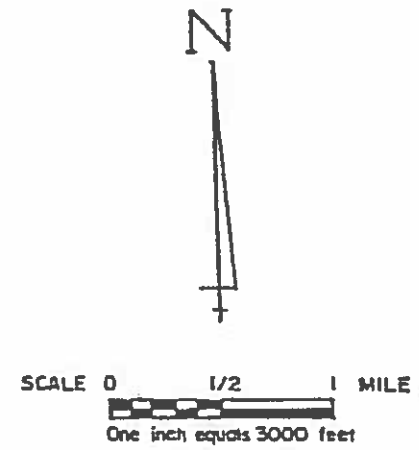
CITY OR VILLAGE STREET

PRIMARY ROAD SYSTEM IS 22.89 MILES

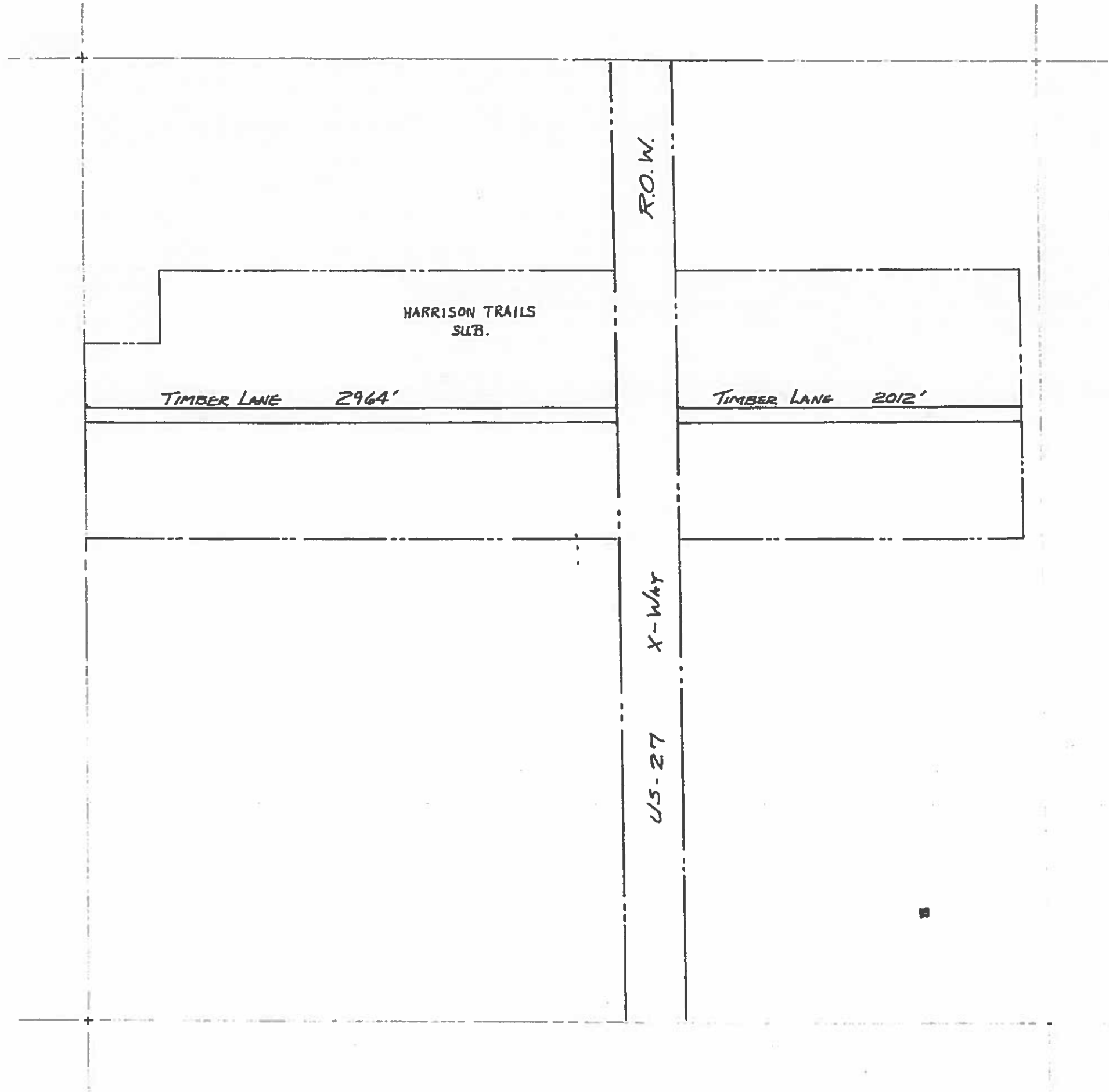
LOCAL ROAD SYSTEM IS 25.85 MILES









I HEREBY CERTIFY THAT THE ROADS SHOWN HEREON BY SYMBOL OR IN RED AS PRIMARY ROADS AND THOSE SHOWN HEREON BY SYMBOL OR IN GREEN AS LOCAL ROADS ARE IN USE AND ARE UNDER THE JURISDICTION OF THE COUNTY ROAD COMMISSION.

CHAIRMAN _____ DATE _____



CLARE CO. T1BN, R4W
HATTON - 7

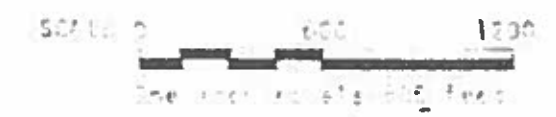


COUNTY LINE 
 CORPORATE LIMITS 
 STATE TRUNK LINE 
 COUNTY PRIMARY 
 COUNTY LOCAL 
 ADJACENT COUNTY 
 CITY OR VILLAGE 
 STREET 

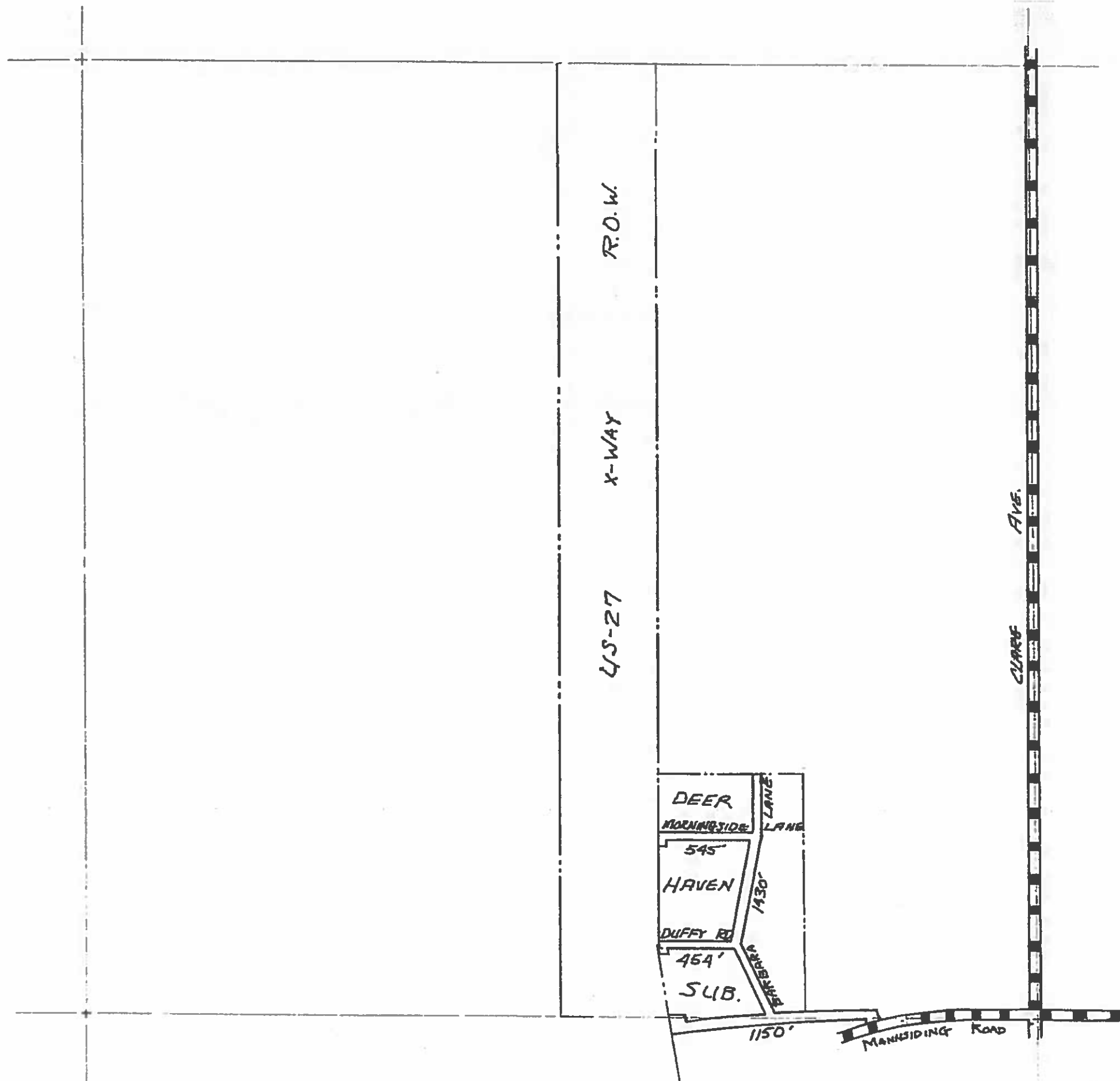
TOTAL FEET 4976 EQUALS 0.94 MILE

I HEREBY CERTIFY THAT THE ROADS SHOWN HEREON BY SYMBOL OR IN GREEN AS LOCAL ROADS ARE IN USE AND ARE UNDER THE JURISDICTION OF THE COUNTY ROAD COMMISSION.

CHAIRMAN _____ DATE _____



DRAWN BY HAYDON TIBB - RAW
 CHECKED BY 3
 DATE CLARE 7-1



COUNTY LINE
 CORPORATE LIMITS
 STATE TRUNKLINE
 COUNTY PRIMARY
 COUNTY LOCAL
 ADJACENT COUNTY
 CITY OR VILLAGE
 STREET

TOTAL FEET 3579 EQUALS 0.68 MILE

I HEREBY CERTIFY THAT THE ROADS SHOWN
 HEREON BY SYMBOL OR IN GREEN AS LOCAL
 ROADS ARE IN USE AND ARE UNDER THE
 JURISDICTION OF THE COUNTY ROAD COM-
 MISSION.

CHAIRMAN _____ DATE _____



TOWNSHIP HATTON T18N-R4W
 SECTION 10
 COUNTY CLARE