

LEGEND

COUNTY LINE
 CORPORATE LIMITS
 STATE TRUNKLINE
 COUNTY PRIMARY
 COUNTY LOCAL
 ADJACENT COUNTY
 CITY OR VILLAGE
 STREET

PRIMARY ROAD SYSTEM IS 8.40 MILES

LOCAL ROAD SYSTEM IS 46.91 MILES

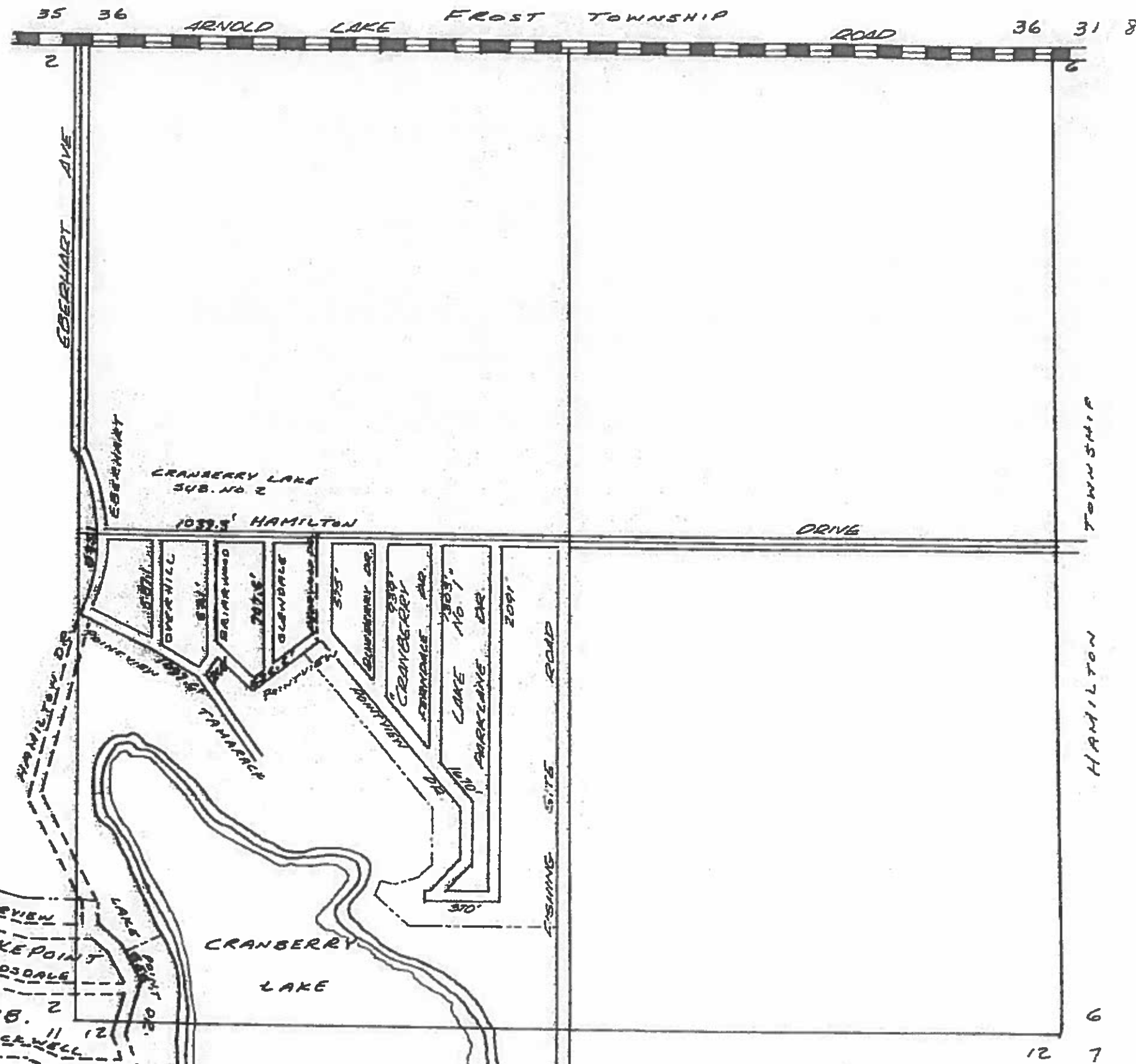
I HEREBY CERTIFY THAT THE ROADS SHOWN HEREON BY SYMBOL OR IN RED AS PRIMARY ROADS AND THOSE SHOWN HEREON BY SYMBOL OR IN GREEN AS LOCAL ROADS ARE IN USE AND ARE UNDER THE JURISDICTION OF THE COUNTY ROAD COMMISSION.

CHAIRMAN _____ DATE _____



SCALE 0 1/4 1 MILE
 One inch equals 3000 feet

CLARE CO. T19N, R4W
 HAYES - 11



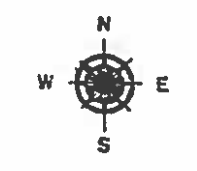
LEGEND

- COUNTY LINE
- CORPORATE LIMITS
- STATE TRUNKLINE
- COUNTY PRIMARY
- COUNTY LOCAL
- ADJACENT COUNTY
- CITY OR VILLAGE STREET

TOTAL FEET 13392 EQUALS 2.54 MILES

I HEREBY CERTIFY THAT THE ROADS SHOWN HEREON BY SYMBOL OR IN GREEN AS LOCATED ROADS ARE IN USE AND ARE UNDER THE JURISDICTION OF THE COUNTY ROAD COMMISSION

CHAIRMAN DATE



SCALE 0 600 1200 FEET
ONE INCH EQUALS 600 FEET 1/2

TOWNSHIP T19N R4W

SECTION 1
HAYES
11-1

FROST TOWNSHIP

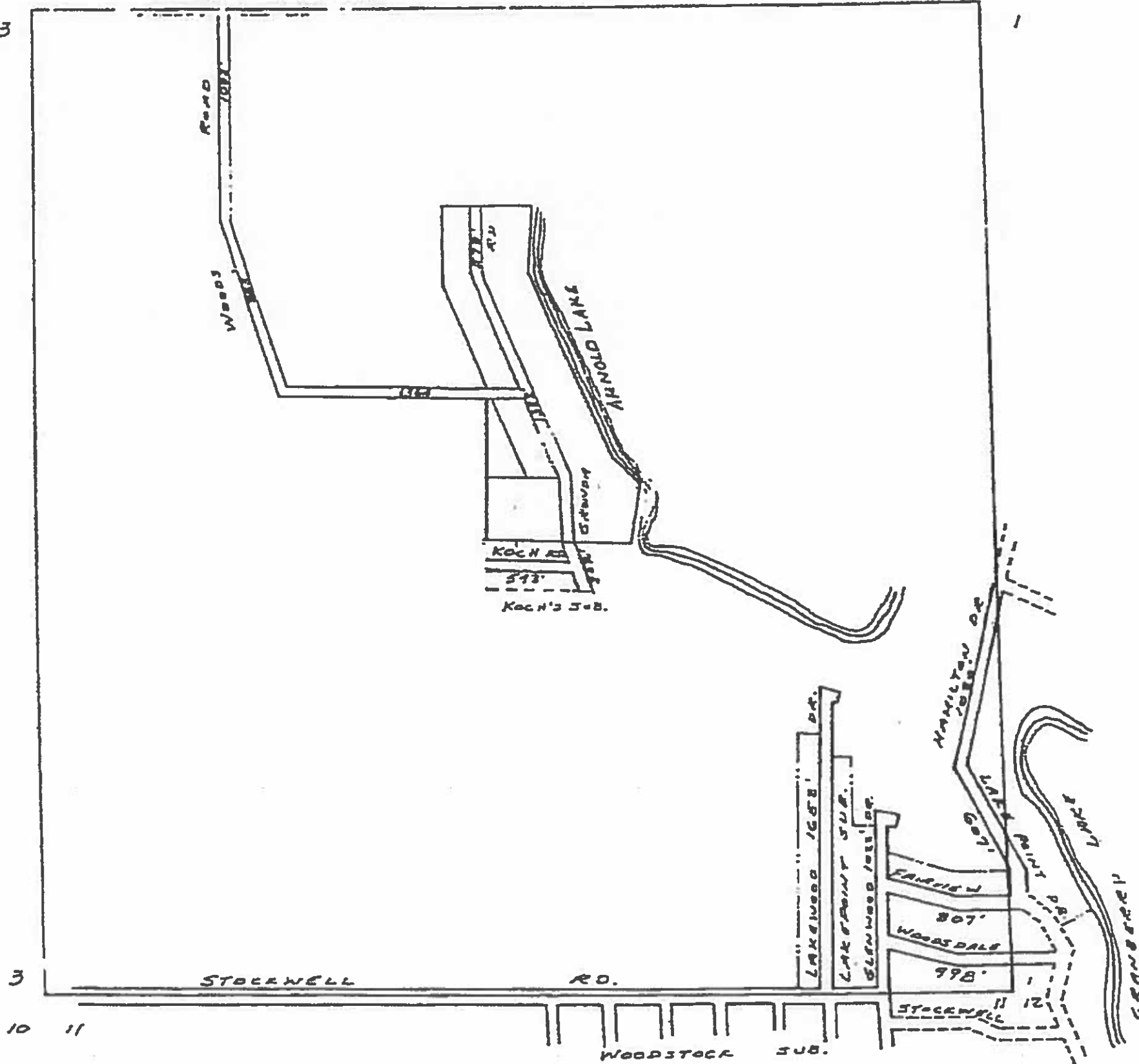
34 35

35 36

3

1

ARNOLD LAKE RD.



LEGEND	
COUNTY LINE	-----
CORPORATE LIMITS	-----
STATE BOUNDARY	-----
COUNTY PRIMARY	-----
COUNTY LOCAL	-----
ADJACENT COUNTY	-----
CITY OR VILLAGE STREET	-----

TOTAL FEET 12063 EQUALS 2.28 MILES

I HEREBY CERTIFY THAT THE ROADS SHOWN HEREON BY SYMBOL OR IN BOLD AS LOCAL ROADS ARE IN USE AND ARE WITHIN THE JURISDICTION OF THE COUNTY ROAD COMMISSION.



SCALE 0 500 1000 FEET

TOWNSHIP FREYTS
SECTION 2 T15N R12W
COUNTY CLATSOP

Drawn by
MORGAN SHAW ENGINEERING INC.
11-2

3

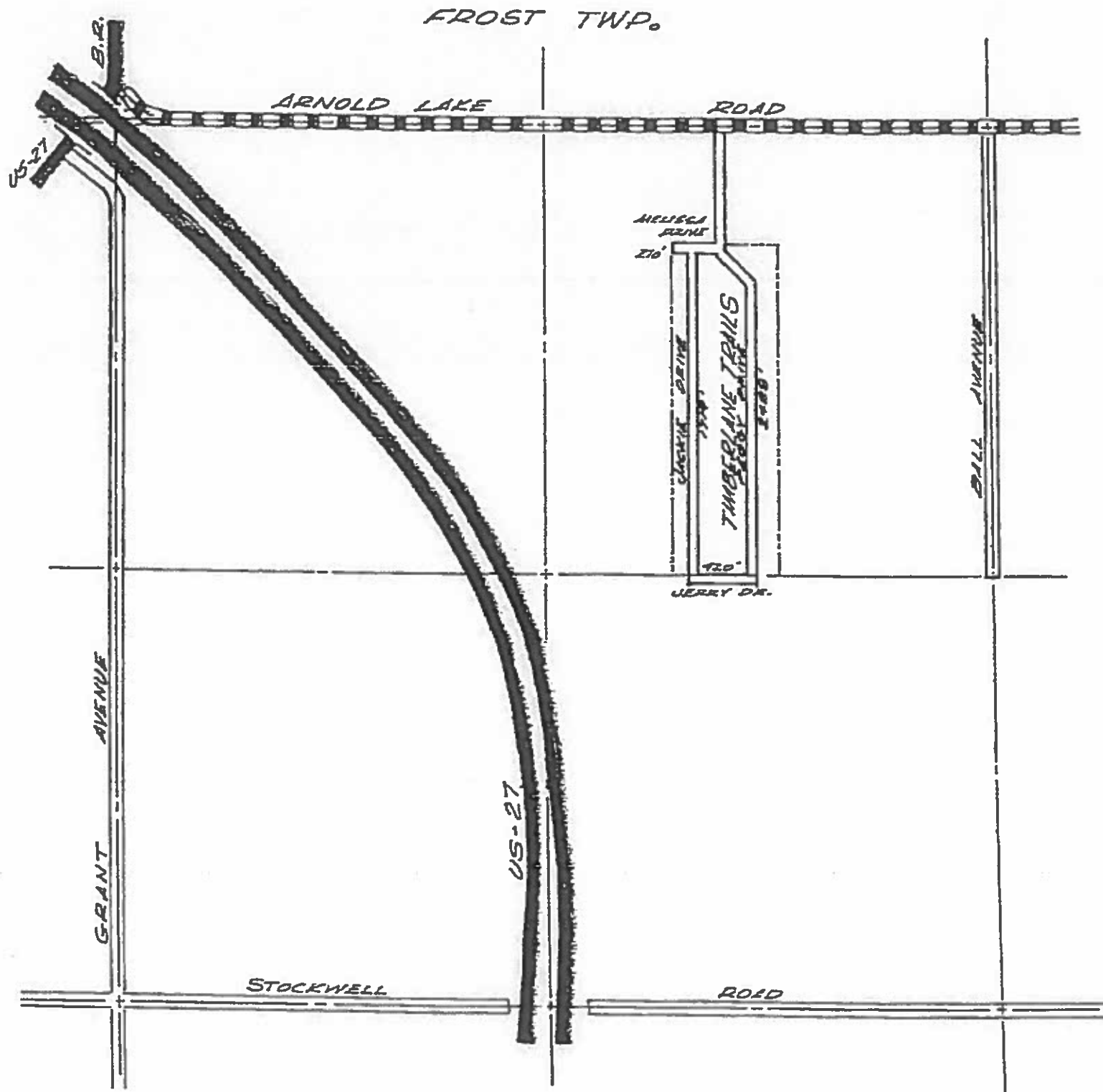
10 11

STEERWELL RD.


RD.


WOODSTOCK SUB.


11-2




LEGEND

STATE TRUNKLINE 

COUNTY PRIMARY 

COUNTY LOCAL 

RAILROADS 

TOTAL FEET 4897

MILES 0.93

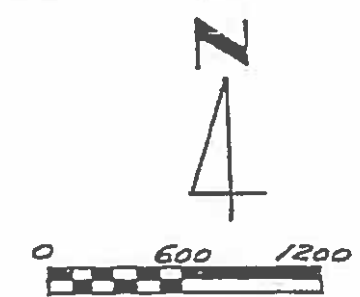
HAYES TWP.

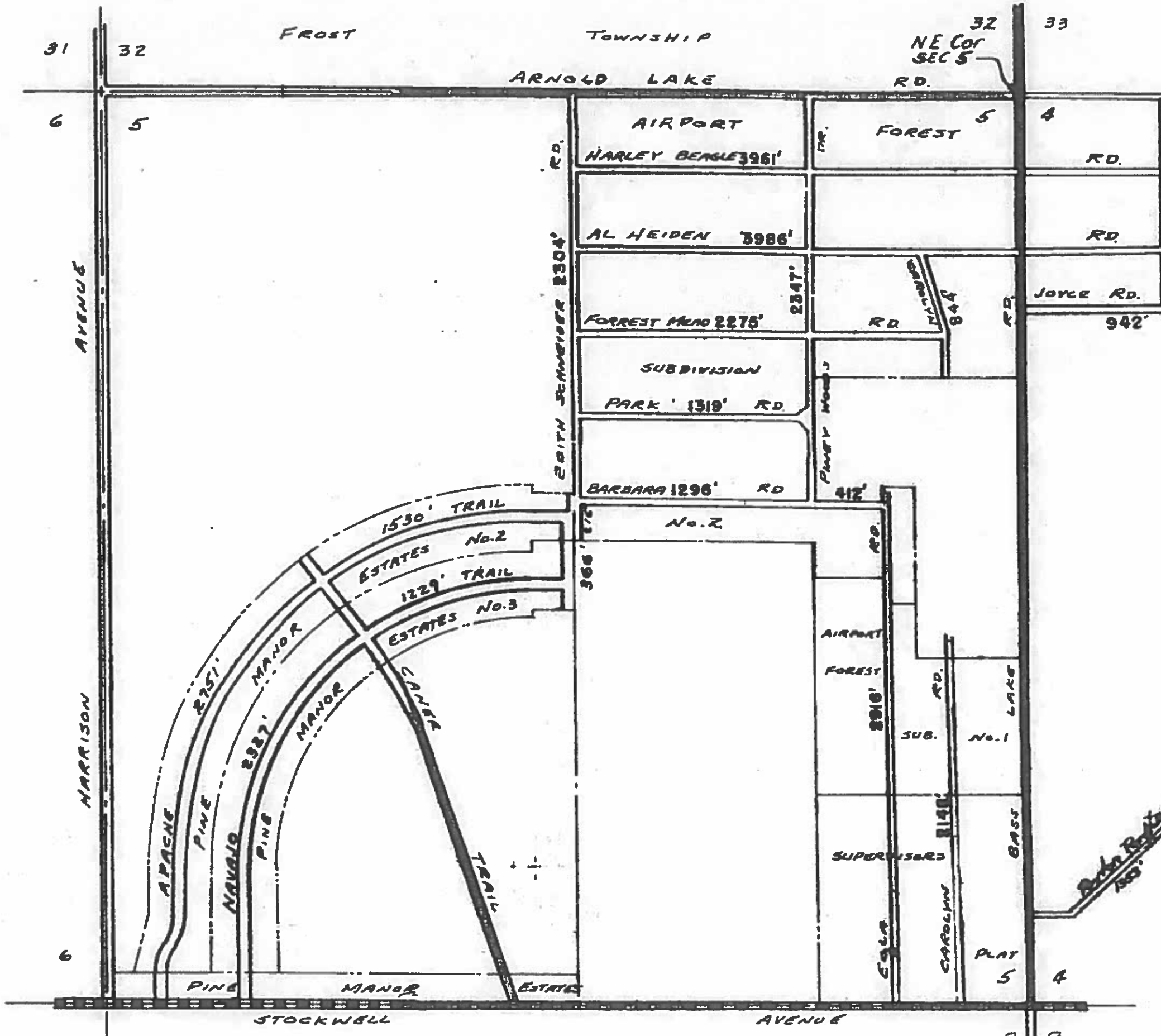
T19N R4W

SECTION 3

CLARE COUNTY

SHEET 11-3





LEGEND

COUNTY LINE -----

CORPORATE LIMITS - - - - -

STATE TOWNLINE =====

COUNTY PRIMARY =====

COUNTY LOCAL =====

ADJACENT COUNTY =====

CITY OR VILLAGE STREET =====

TOTAL FEET 35650 EQUALS 6.75 MILES

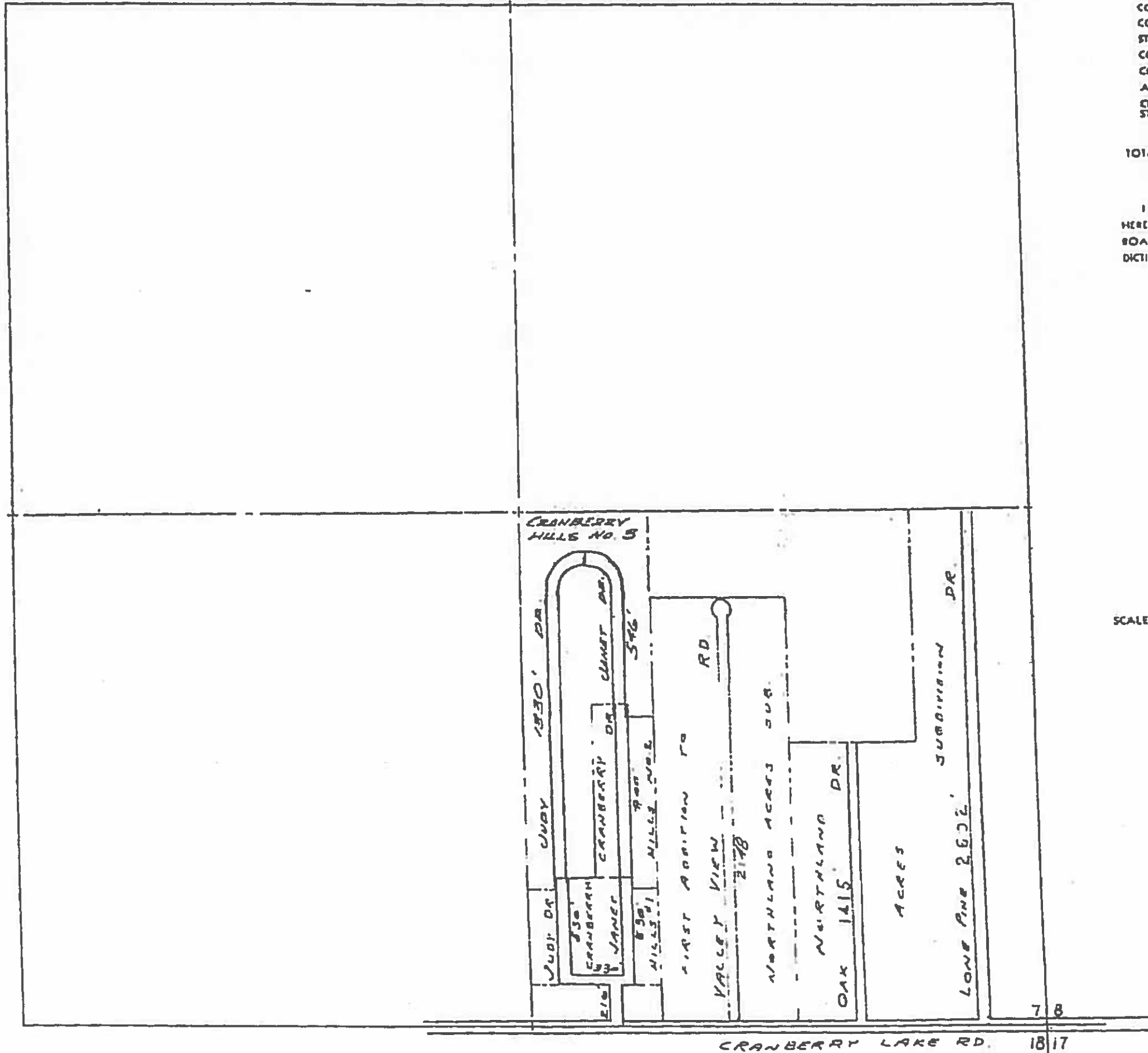
I HEREBY CERTIFY THAT THE ROADS SHOWN HEREON BY SYMBOL OR IN GREEN AS LOCAL ROADS ARE IN USE AND ARE UNDER THE JURISDICTION OF THE COUNTY BOARD COMMISSION

CHAIRMAN DATE

SCALE 0 100 200 FEET

SECTION 5 T19N R24W

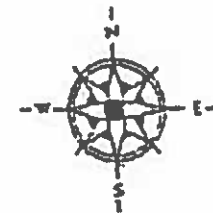
Prepared by
MONGAN STATE HIGHWAY DEPARTMENT
11-4



COUNTY LINE _____
 CORPORATE LIMITS _____
 STATE TOWNSHIP LINE _____
 COUNTY PRIMARY _____
 COUNTY LOCAL _____
 ADJACENT COUNTY _____
 CITY OR VILLAGE STREET _____

TOTAL FEET 10,547 EQUALS 2.00 MILES

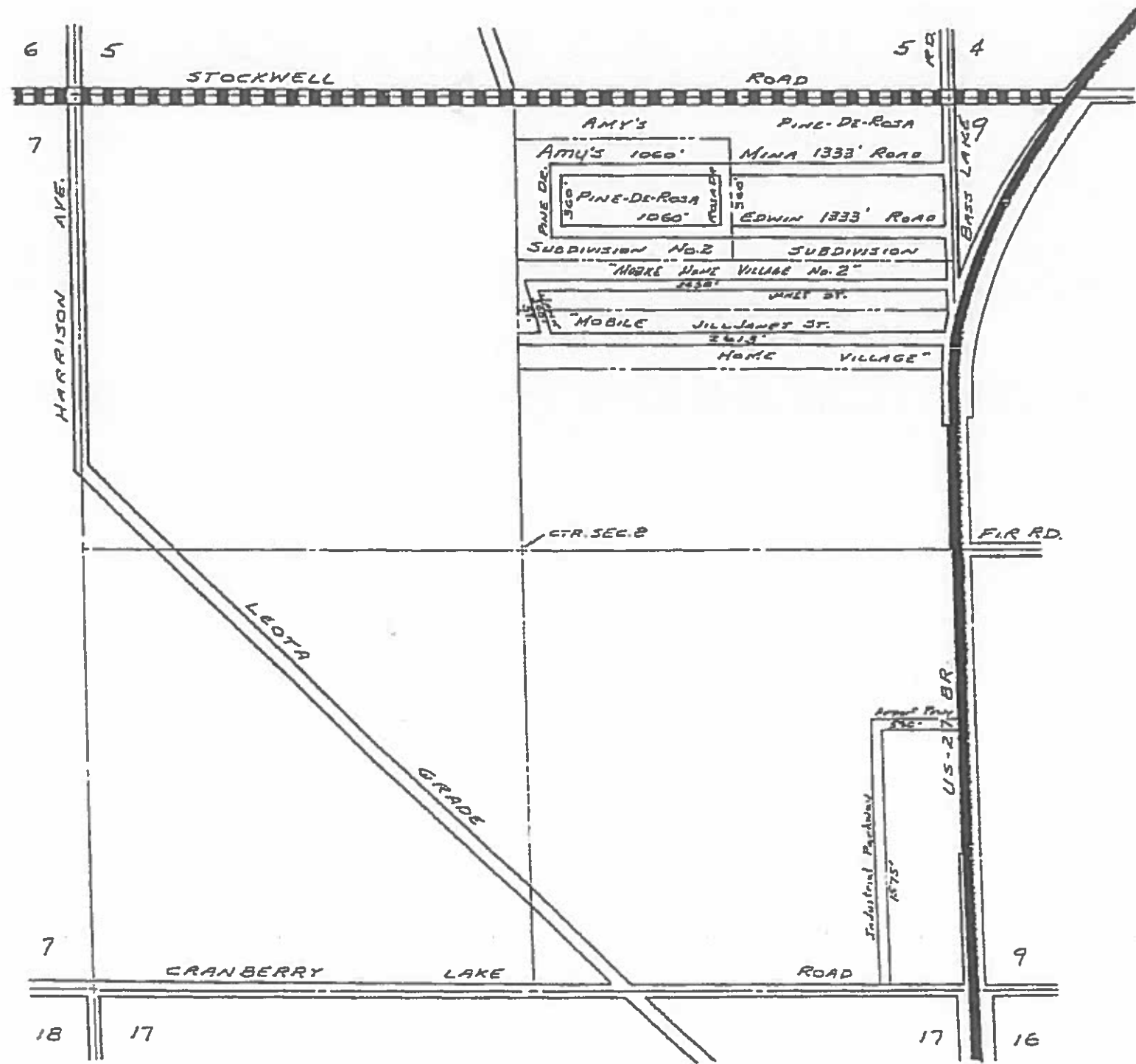
I HEREBY CERTIFY THAT THE ROADS SHOWN HEREON BY SYMBOL OR IN GREEN AS LOCAL ROADS ARE IN USE AND ARE UNDER THE JURISDICTION OF THE COUNTY ROAD COMMISSION.



SCALE 0 600 1200 FEET
One inch equals 600 feet

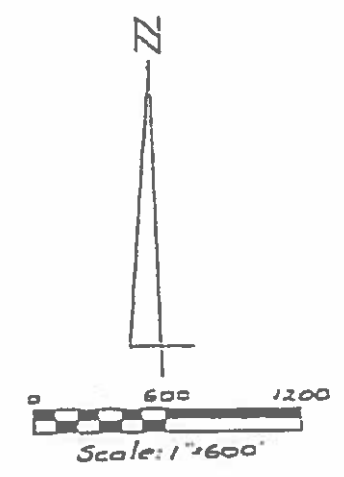
TOWNSHIP HAVEN
 SECTION 7 T. 10N R. 4W
 COUNTY Clare

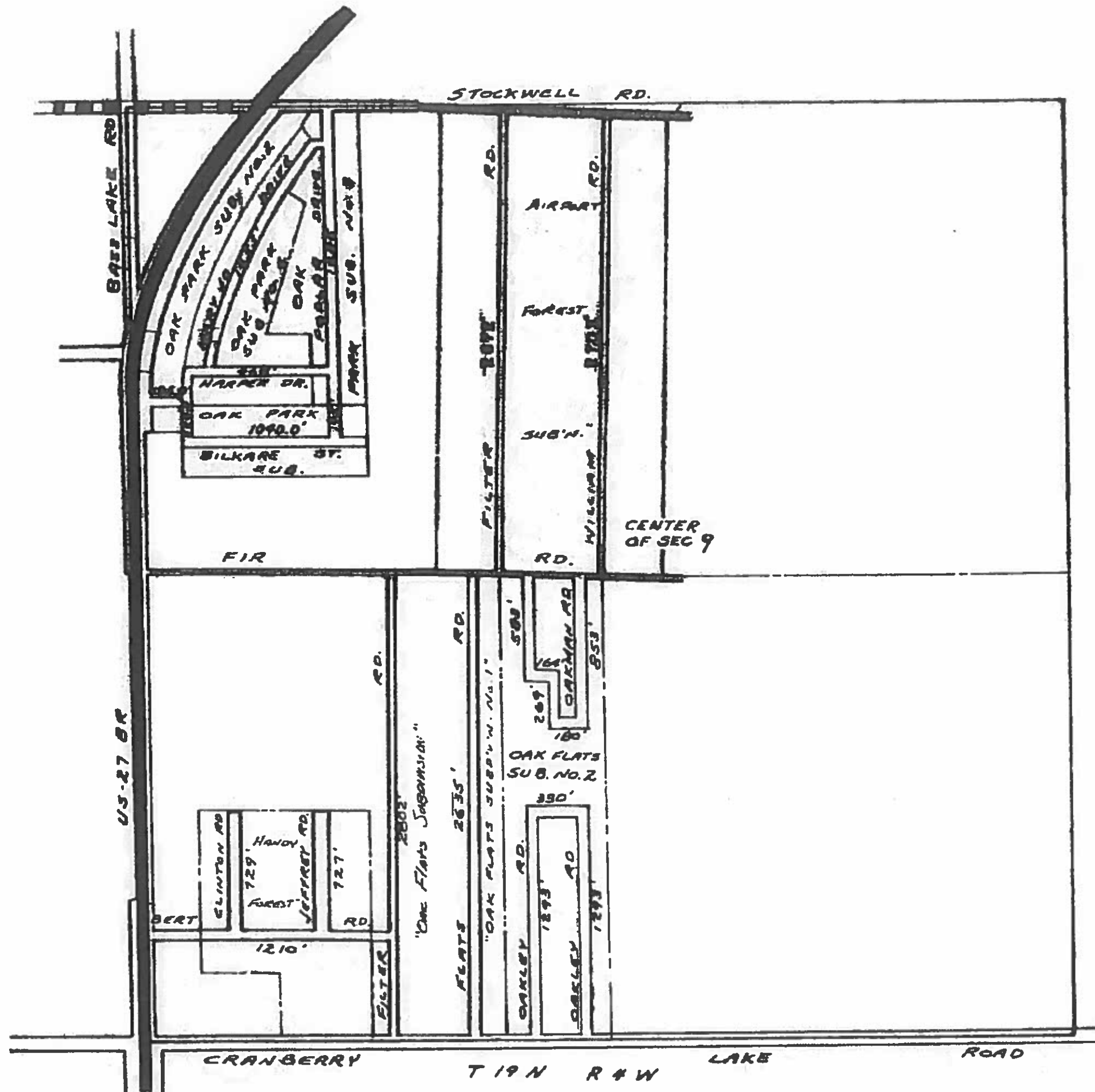
Prepared by
 MICHIGAN STATE HIGHWAY DEPARTMENT
11-5



13,034 2.47

Sheet 11-6





LEGEND

COUNTY LINE	----
CORPORATE LIMITS	-----
STATE WIRELINE	=====
COUNTY PRIMARY	
COUNTY LOCAL	
ADJACENT COUNTY	
CITY OR VILLAGE STREET	

TOTAL FEET 24,203 EQUALS 4.58 MILES

I HEREBY CERTIFY THAT THE ROADS SHOWN HEREON BY SYMBOL OR IN GREEN AS LOCAL ROADS ARE IN USE AND ARE UNDER THE JURISDICTION OF THE COUNTY ROAD COMMISSION.

CHAIRMAN DATE

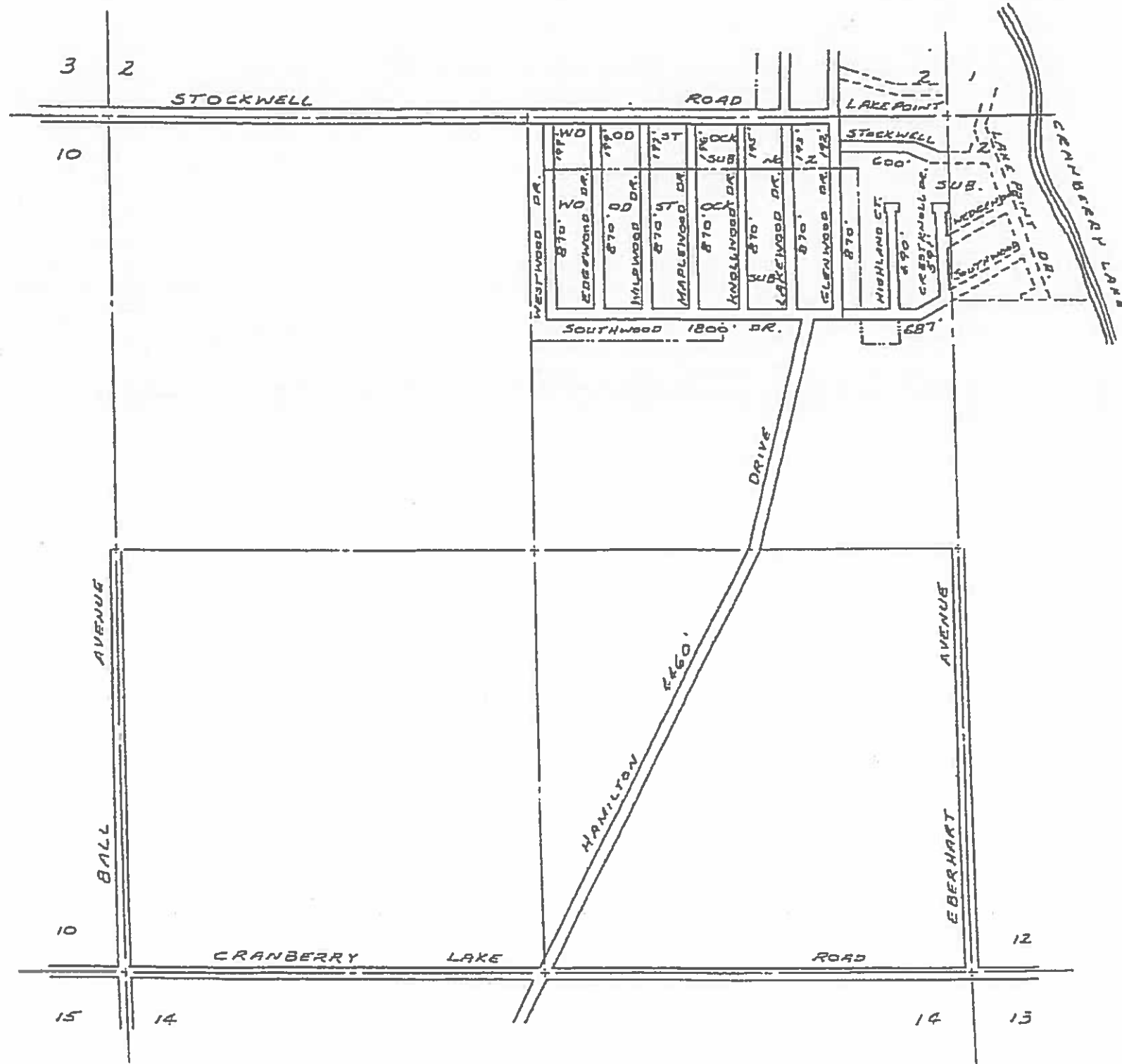


SCALE 0 600 1200 FEET
 One inch equals 600 feet


TOWNSHIP HAYES = 19N
 SECTION 9 T19N. R4W.


Class Co.-18
 Prepared by
 MICHIGAN STATE HIGHWAY DEPARTMENT
 11-7


11-7



LEGEND

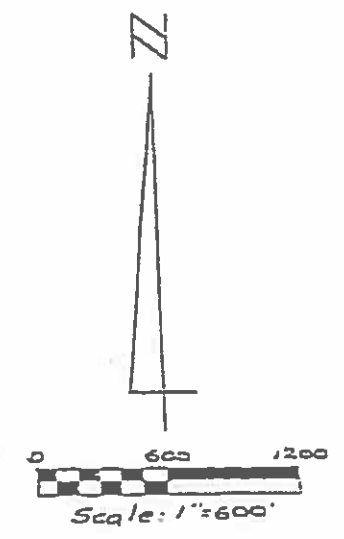
STATE TRUNKLINE 

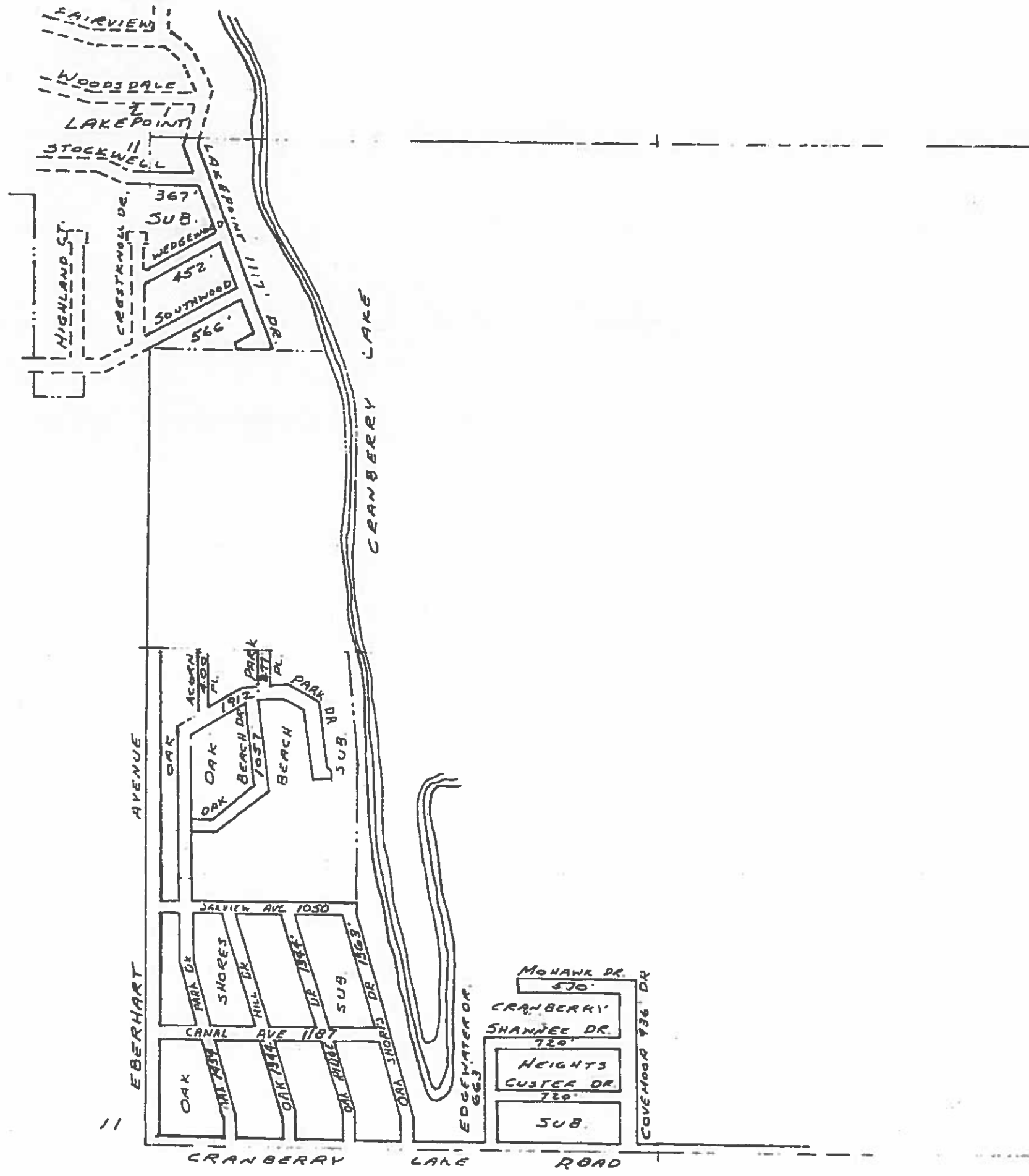
COUNTY PRIMARY 

COUNTY LOCAL 

Total Feet 16287 Miles 3.08

HAYES TOWNSHIP
 T. 19 N., R. 4 W.
 SECTION 11
 Clare County
 Sheet 11-B





16
77

LEGEND

COUNTY LINE	---
CURFEW LINES	----
STATE TRUNKLINE	=====
COUNTY PRIMARY	=====
COUNTY LOCAL	=====
ADJACENT COUNTY	=====
CITY OR VILLAGE STREET	=====

TOTAL FEET 17505 EQUALS 3.32 MILES

I HEREBY CERTIFY THAT THE LINES SHOWN HEREON BY SYMBOLS IN GREEN AS LOCAL ROADS ARE IN USE AND ARE UNDER THE JURISDICTION OF THE COUNTY ROAD COMMISSION

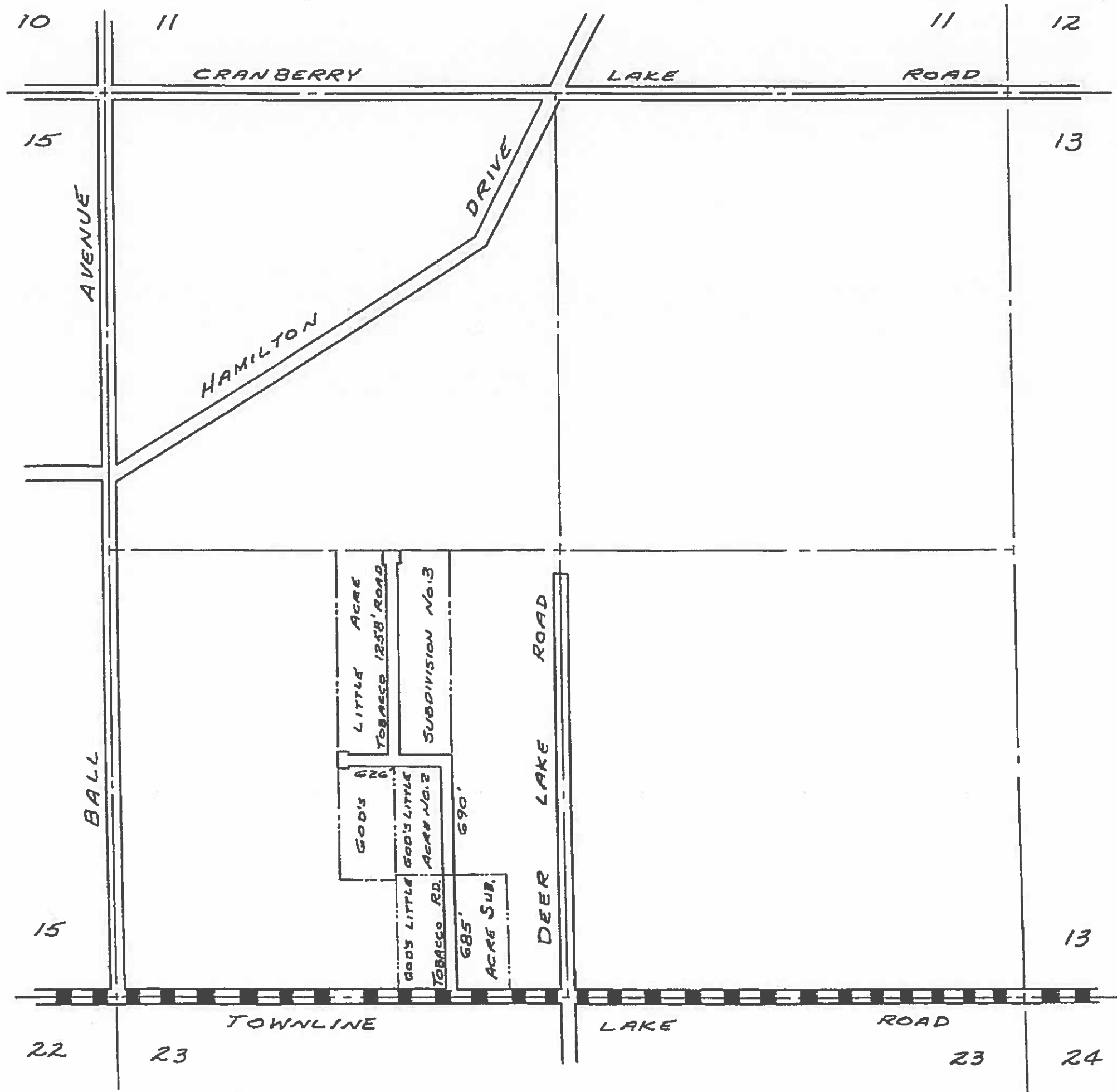
CHAIRMAN DATE



SCALE 0' 100' 200 FEET
ONE INCH EQUALS 100 FEET

TOWNSHIP HAYES T19N; R4W
SECTION 12
11-9

7
3 18



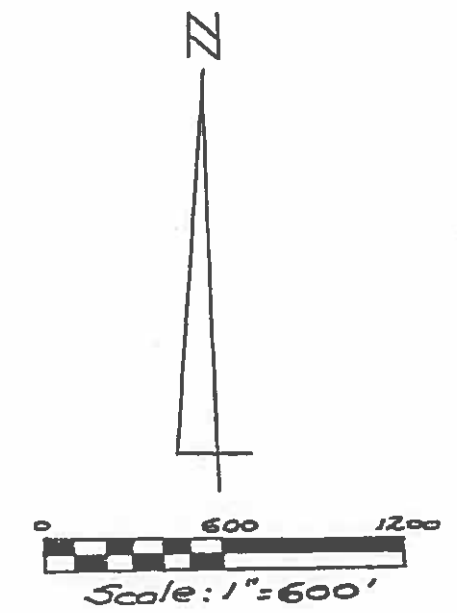
LEGEND

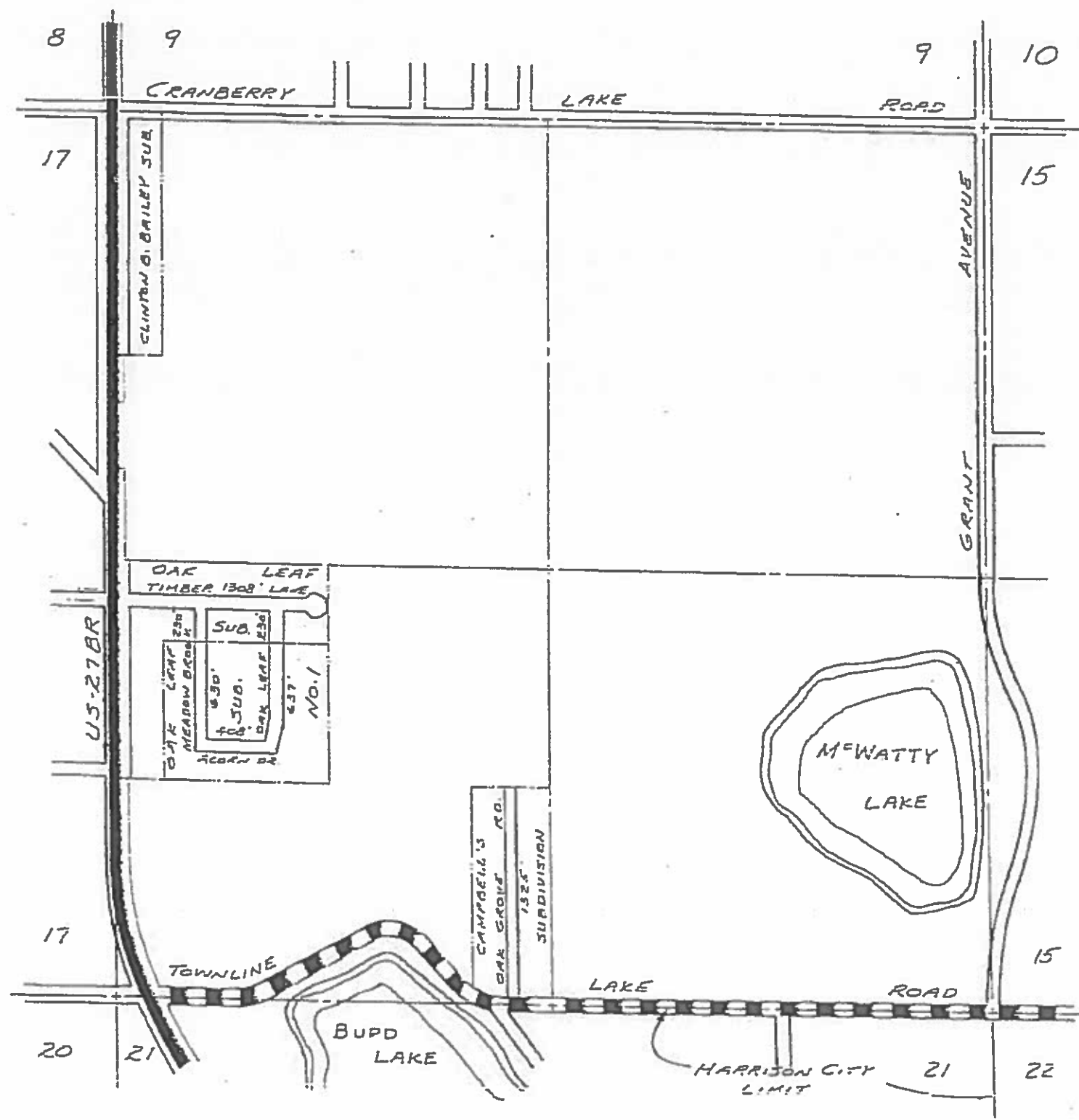
COUNTY PRIMARY 
 COUNTY LOCAL 



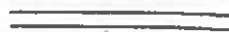
Total Feet 3259 Miles 0.62

HAYES TOWNSHIP
 T. 19 N., R. 4 W.
 SECTION 14
 CLARE COUNTY

Sheet 11 - 10

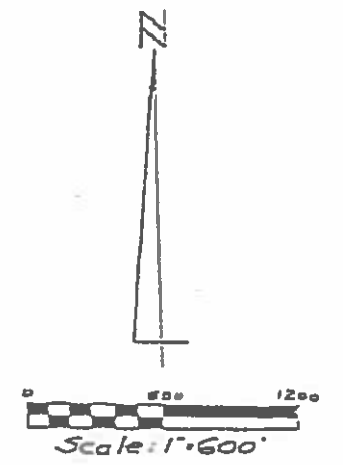




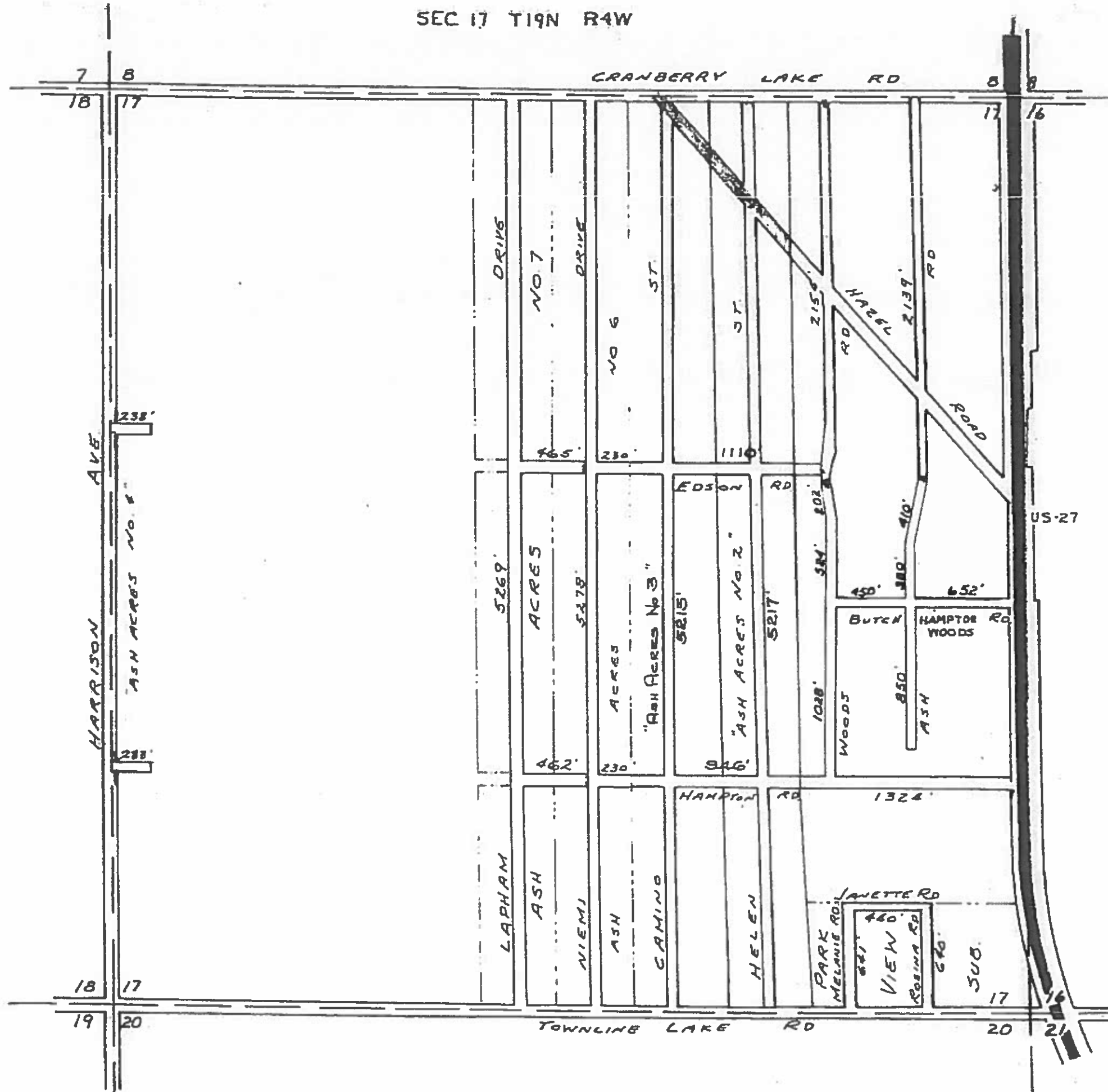
LEGEND
 STATE TRUNKLINE 
 COUNTY PRIMARY 
 COUNTY LOCAL 

Total Feet 4768 Miles 0.90

HAYES TOWNSHIP
 T 15 N, R 4 W
 SECTION 15
 CLARE COUNTY
 Sheet 11 - 11



SEC 17 T19N R4W



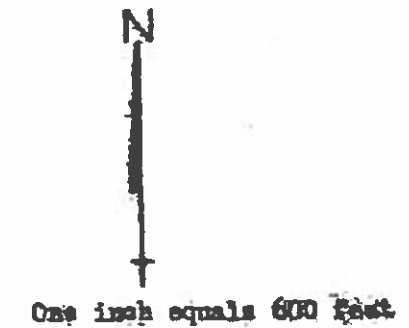
TOTAL FEET 36672 EQUALS 6.95 MILES

I HEREBY CERTIFY THAT THE ROAD SHOWN HEREON BY SYMBOL OR IN GREEN AS LOCAL ROADS ARE IN USE AND ARE UNDER THE JURISDICTION OF THE COUNTY ROAD COMMISSION.

CHAIRMAN _____ DATE _____

LEGEND

- STATE TRUNKLINE
- COUNTY PRIMARY
- COUNTY LOCAL



TOWNSHIP HAYES

SECTION 17 T19N R4W

Prepared by
MICHIGAN STATE HIGHWAY DEPARTMENT

CORPORATE LIMITS -----
 STATE TRUNKLINE =====
 COUNTY PRIMARY -----
 COUNTY LOCAL =====
 ADJACENT COUNTY =====
 CITY OR VILLAGE -----
 STREET -----

TOTAL FEET 3950 EQUALS 0.75 MILE

I HEREBY CERTIFY THAT THE ROADS SHOWN
 HEREON BY SYMBOL OR IN GREEN AS LOCAL
 ROADS ARE IN USE AND ARE UNDER THE
 JURISDICTION OF THE COUNTY ROAD COM-
 MISSION.

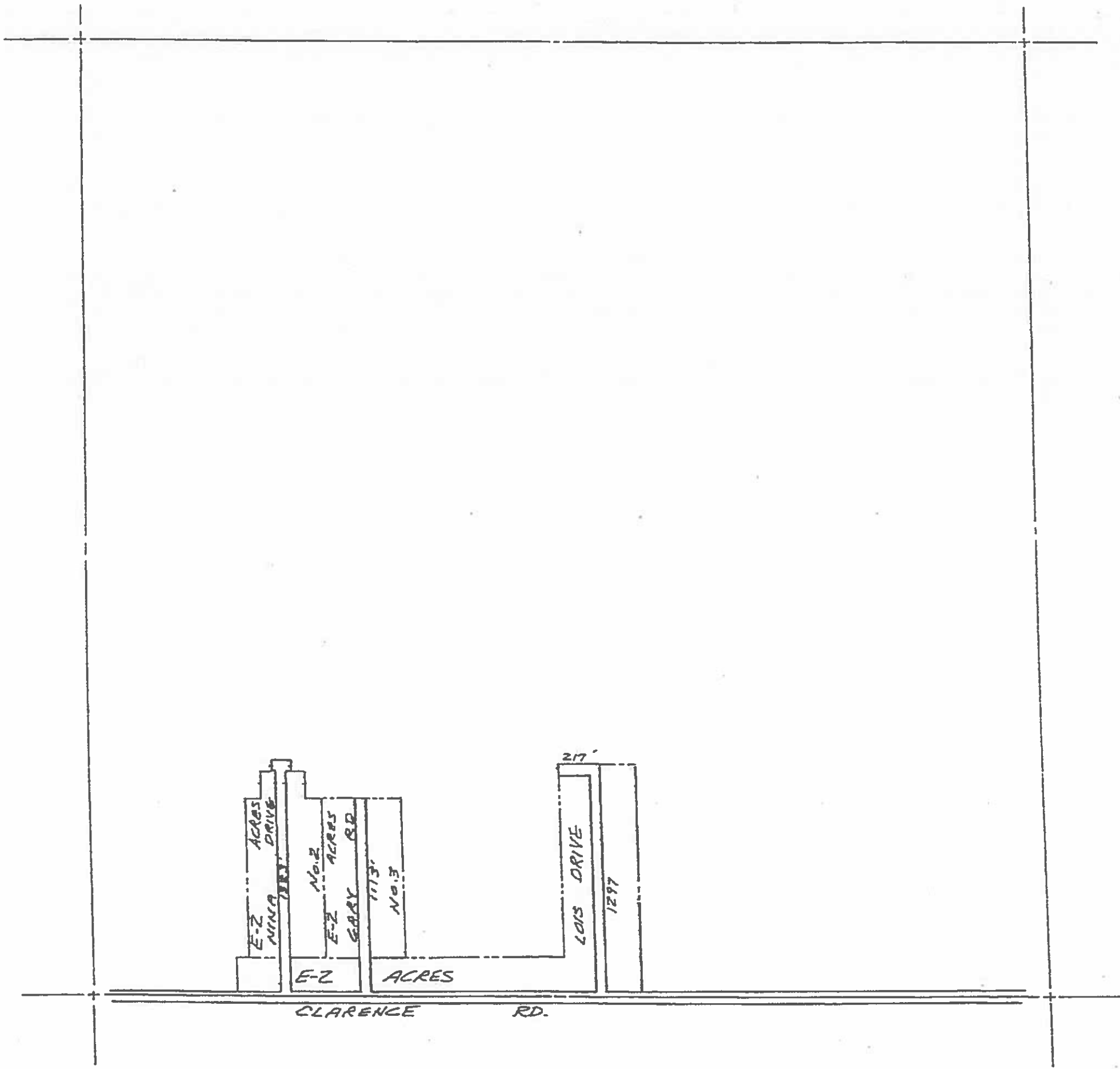
CHAIRMAN _____ DATE _____

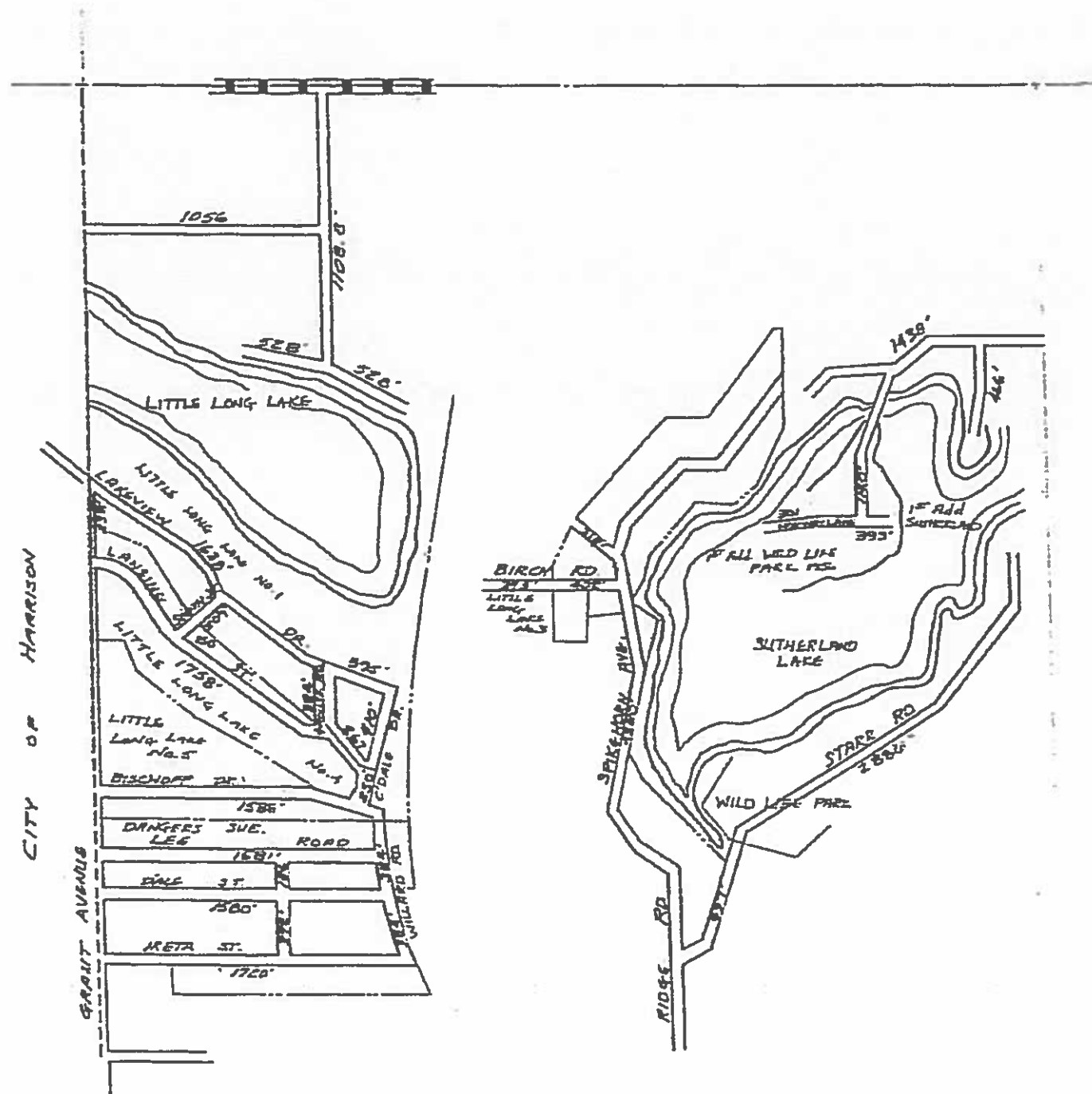


SCALE 0 600 1200
 One inch equals 600 feet

TOWNSHIP HAYES T19N, R4W
 SECTION 19
 COUNTY CLARE

11-13





CLARE COUNTY	PLAT NO.	5-58
CLARE COUNTY	SECTION	22
CLARE COUNTY	TOWNSHIP	T13N R4W
CLARE COUNTY	RANGE	CLARE

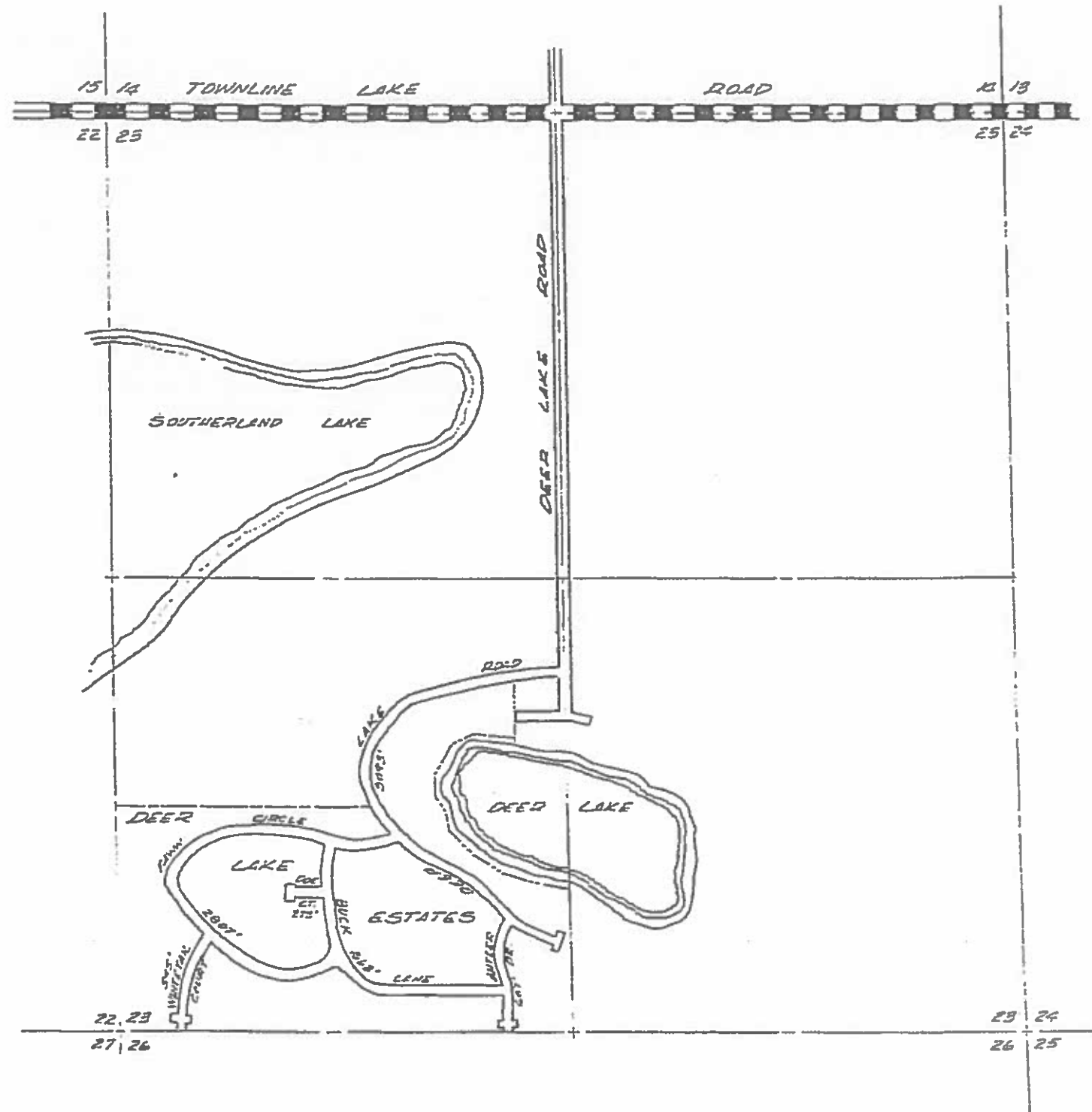
29,431.8 5.58

I HEREBY CERTIFY THAT THE ROADS SHOWN HEREON BY SYMBOLS IN GREEN AS LOCAL ROADS ARE IN USE AND ARE UNDER THE JURISDICTION OF THE COUNTY ROAD COMMISSION.

DATE _____



HAYES TISH RAW
SECTION 22
CLARE



LEGEND

COUNTY PRIMARY 

COUNTY LOCAL 

TOTAL FEET 8986' MILES 1.70

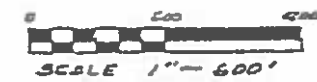
HAYES TOWNSHIP

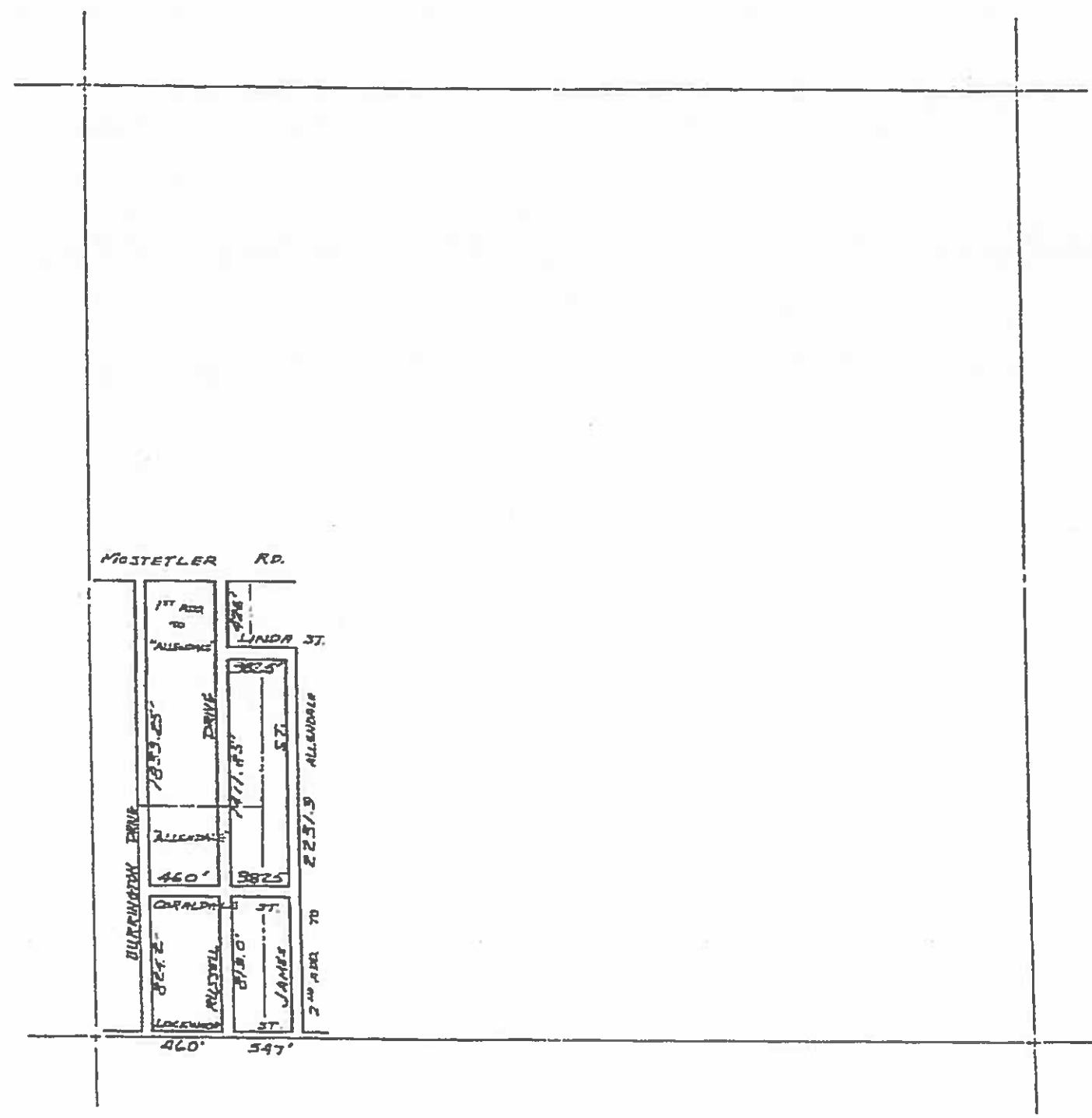
T19N R4W

SECTION 23

CLARE COUNTY

SHEET 11-15





LEGEND

- COUNTY LINE
- CORPORATE LIMITS
- STATE TRUNKLINE
- COUNTY PRIMARY
- COUNTY LOCAL
- ADJACENT COUNTY
- CITY OR VILLAGE STREET

TOTAL FEET 7778.2 EQUALS 1.85 MILE

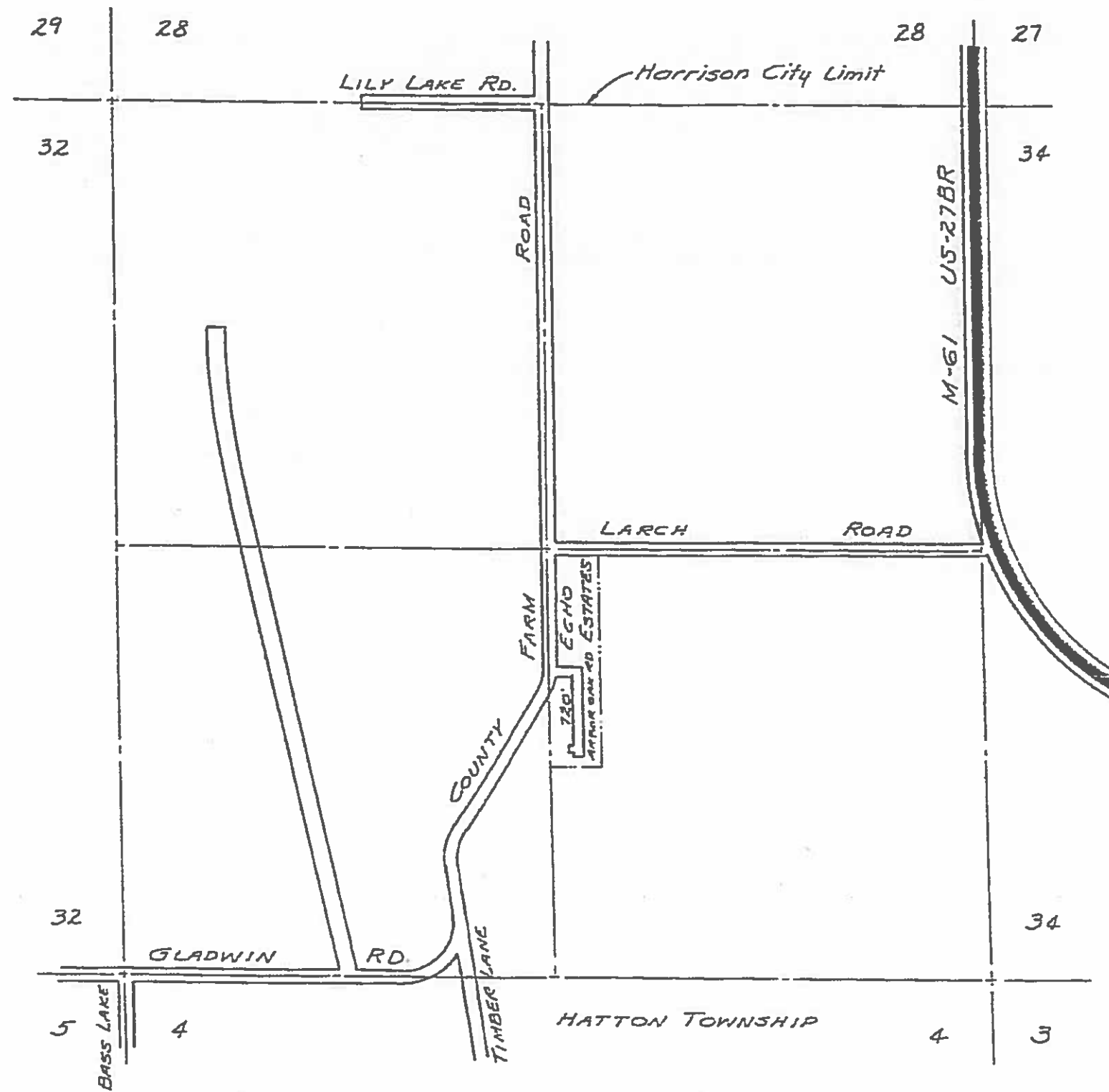
I HEREBY CERTIFY THAT THE ROADS SHOWN HEREON BY SYMBOL OR IN GREEN AS LOCAL ROADS ARE IN USE AND ARE UNDER THE JURISDICTION OF THE COUNTY ROAD COMMISSION.

CHAIRMAN _____ DATE _____



SCALE 0 600 1200
 One inch equals 600 feet

TOWNSHIP HAYES T19N-R4W
 SECTION 27
 COUNTY CLATSOP



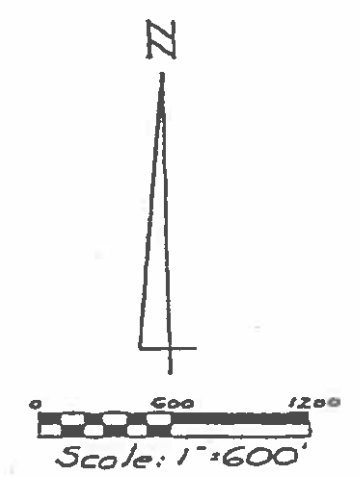
LEGEND

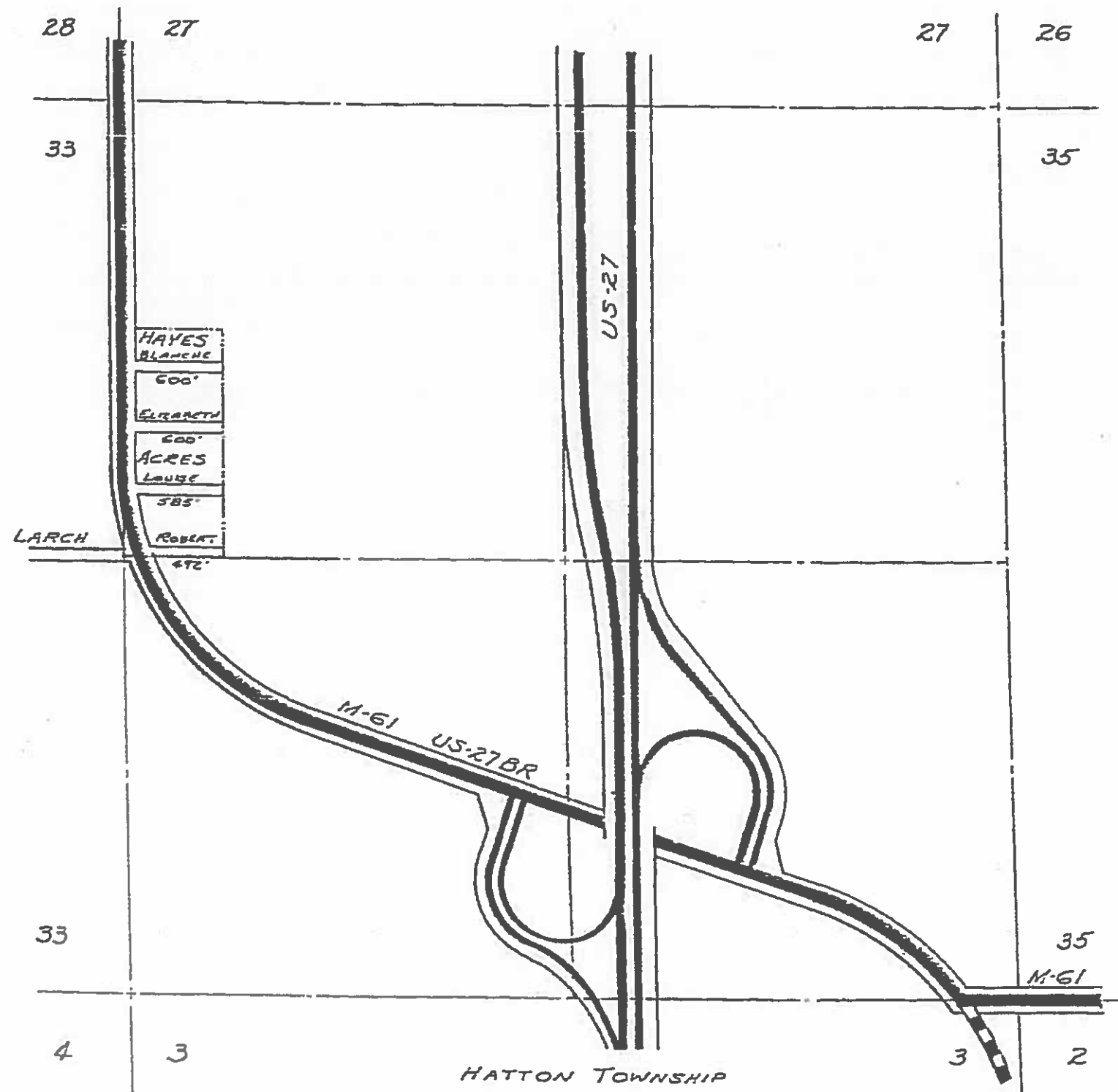
- STATE TRUNKLINE
- COUNTY PRIMARY
- COUNTY LOCAL



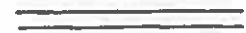
Total Feet 720 Miles 0.14

HAYES TOWNSHIP
 T. 19 N., R. 4 W.
 SECTION 33
 CLARE COUNTY

Sheet 11 - 17





LEGEND
 STATE TRUNKLINE 
 COUNTY PRIMARY 
 COUNTY LOCAL 
 Total Feet 2277 Miles 0.43

HAYES TOWNSHIP
 T. 19 N., R. 4 W.
 Section 34
 CLARE COUNTY
 Sheet 11 - 18

