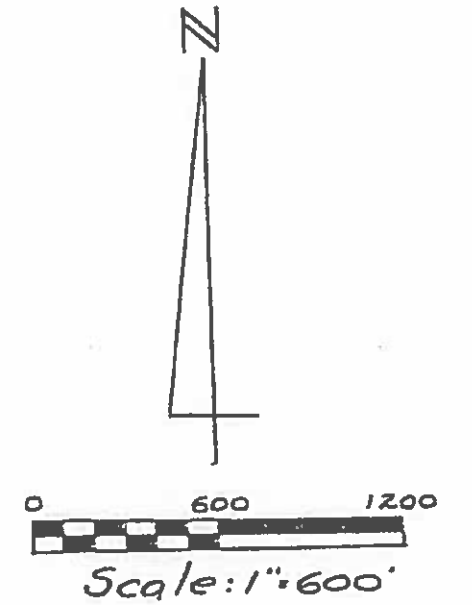


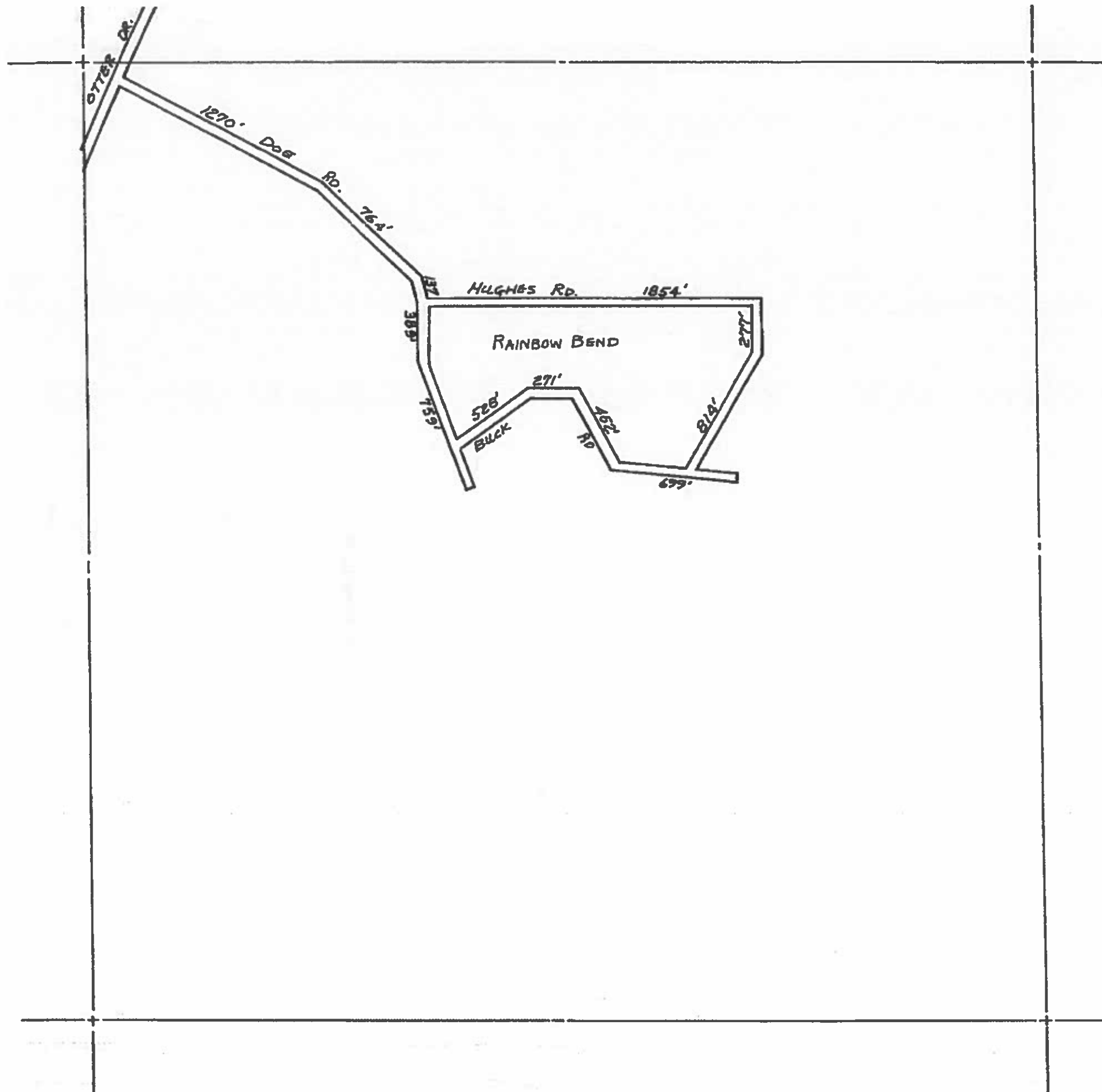
COUNTY PRIMARY   
 COUNTY LOCAL 









Total Feet 8607 Miles 1.63

SUMMERFIELD TOWNSHIP  
 T. 20 N., R. 5 W.  
 SECTIONS 10, 11

Sheet 14-1





COUNTY LINE   
 CORPORATE LIMITS   
 STATE TRUNKLINE   
 COUNTY PRIMARY   
 COUNTY LOCAL   
 ADJACENT COUNTY   
 CITY OR VILLAGE   
 STREET 

TOTAL FEET 8214 EQUALS 1.56 MILE

I HEREBY CERTIFY THAT THE ROADS SHOWN  
 HEREON BY SYMBOL OR IN GREEN AS LOCAL  
 ROADS ARE IN USE AND ARE UNDER THE  
 JURISDICTION OF THE COUNTY ROAD COM-  
 MISSION.

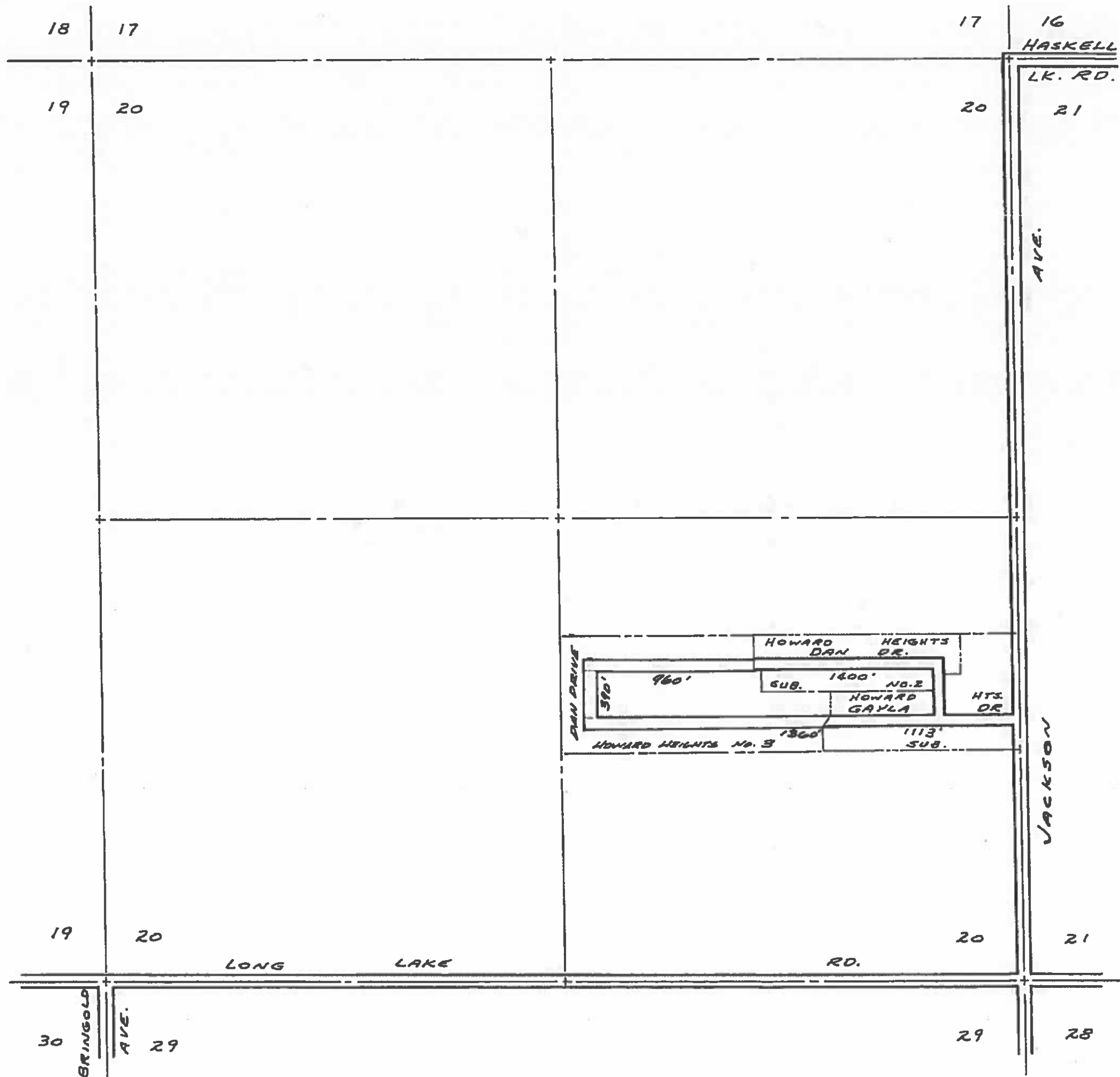
CHAIRMAN \_\_\_\_\_

DATE \_\_\_\_\_






SCALE 0 600 1200  
  
 One inch equals 600 feet

TOWNSHIP SUMMERFIELD  
 SECTION 16 T20N - R5W  
 COUNTY Clare

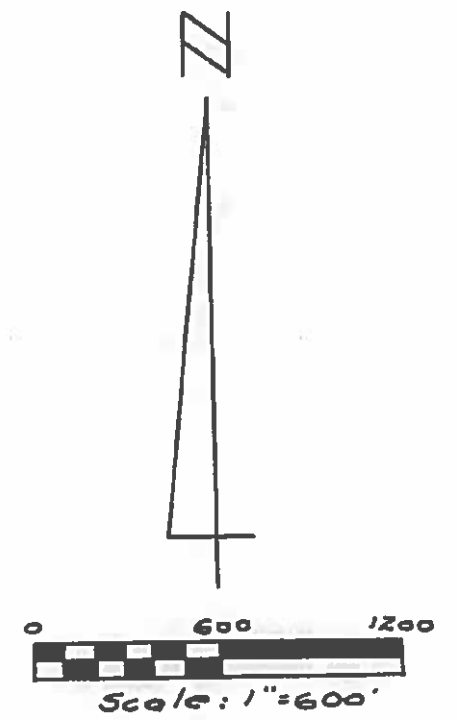


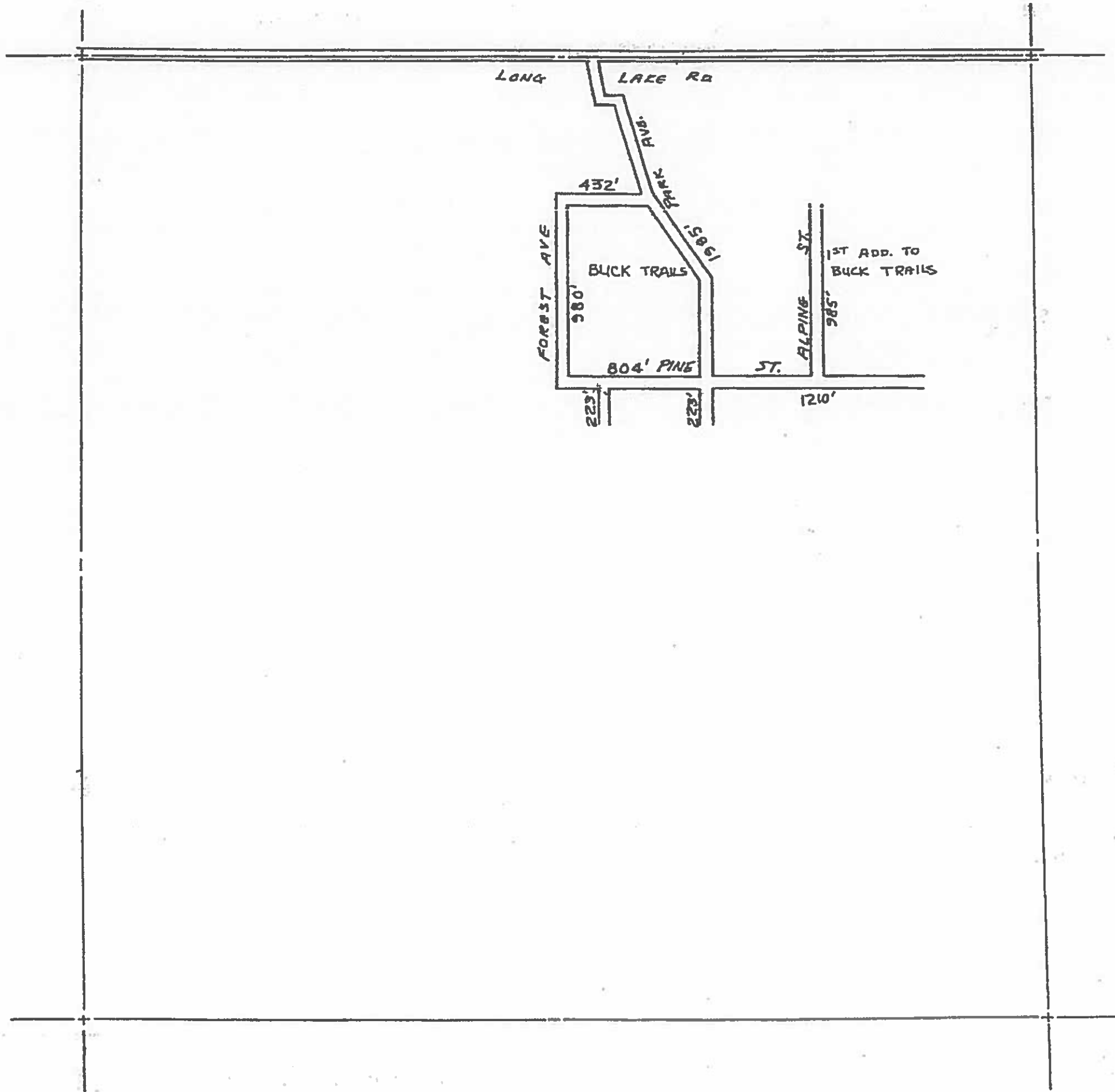
LEGEND









- STATE TRUNKLINE 
- COUNTY PRIMARY 
- COUNTY LOCAL 

Total Feet 5223 Miles 0.99

SUMMERFIELD TOWNSHIP  
T. 20 N., R. 5 W.  
SECTION 20  
CLARE COUNTY  
Sheet 14 - 3



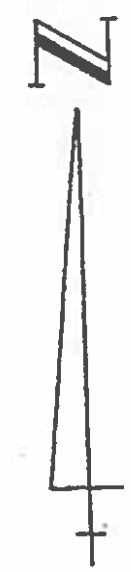



COUNTY LINE   
 CORPORATE LIMITS   
 STATE TRUNKLINE   
 COUNTY PRIMARY   
 COUNTY LOCAL   
 ADJACENT COUNTY   
 CITY OR VILLAGE   
 STREET 

TOTAL FEET 6842 EQUALS 1.30 MILE

I HEREBY CERTIFY THAT THE ROADS SHOWN  
 HEREON BY SYMBOL OR IN GREEN AS LOCAL  
 ROADS ARE IN USE AND ARE UNDER THE  
 JURISDICTION OF THE COUNTY ROAD COM.  
 MISSION.

CHAIRMAN \_\_\_\_\_ DATE \_\_\_\_\_



SCALE 0  600 1200  
 One inch equals 600 feet

TOWNSHIP SUMMERFIELD  
 SECTION 25 T20N - R5W  
 COUNTY Clare