
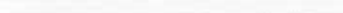








COUNTY LINE   
 CORPORATE LIMITS   
 STATE TRUNKLINE   
 COUNTY PRIMARY   
 COUNTY LOCAL   
 ADJACENT COUNTY   
 CITY OR VILLAGE   
 STREET 

PRIMARY ROAD SYSTEM IS 12.64 MILES









LOCAL ROAD SYSTEM IS 48.45 MILES

I HEREBY CERTIFY THAT THE ROADS SHOWN HEREON BY SYMBOL OR IN RED AS PRIMARY ROADS AND THOSE SHOWN HEREON BY SYMBOL OR IN GREEN AS LOCAL ROADS ARE IN USE AND ARE UNDER THE JURISDICTION OF THE COUNTY ROAD COMMISSION.

CHAIRMAN \_\_\_\_\_ DATE \_\_\_\_\_



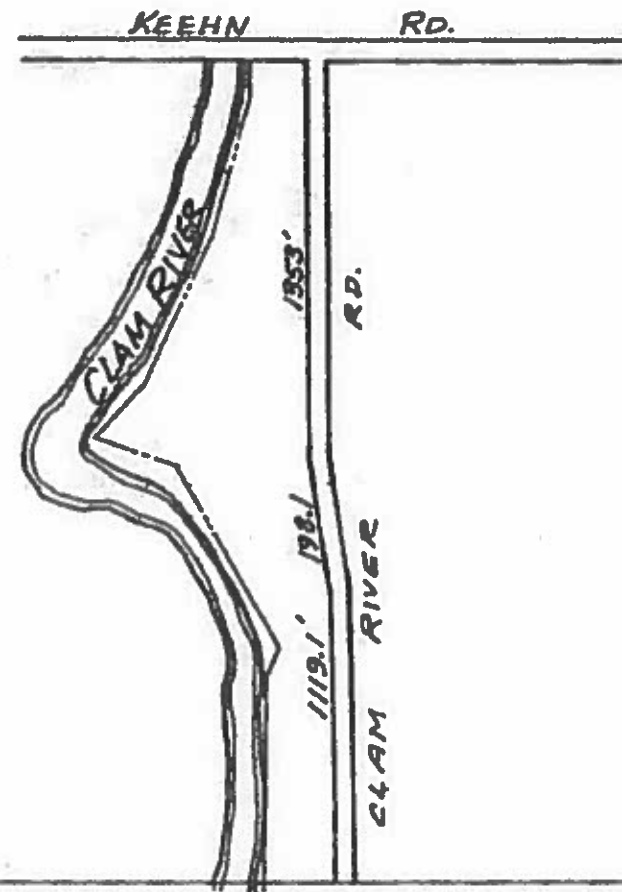
SCALE 0  1 MILE  
 One inch equals 300 feet


COUNTY LINE   
 CORPORATE LIMITS   
 STATE TRUNKLINE   
 COUNTY PRIMARY   
 COUNTY LOCAL   
 ADJACENT COUNTY   
 CITY OR VILLAGE   
 STREET 

TOTAL FEET 2670.2 EQUALS 0.51 MILE

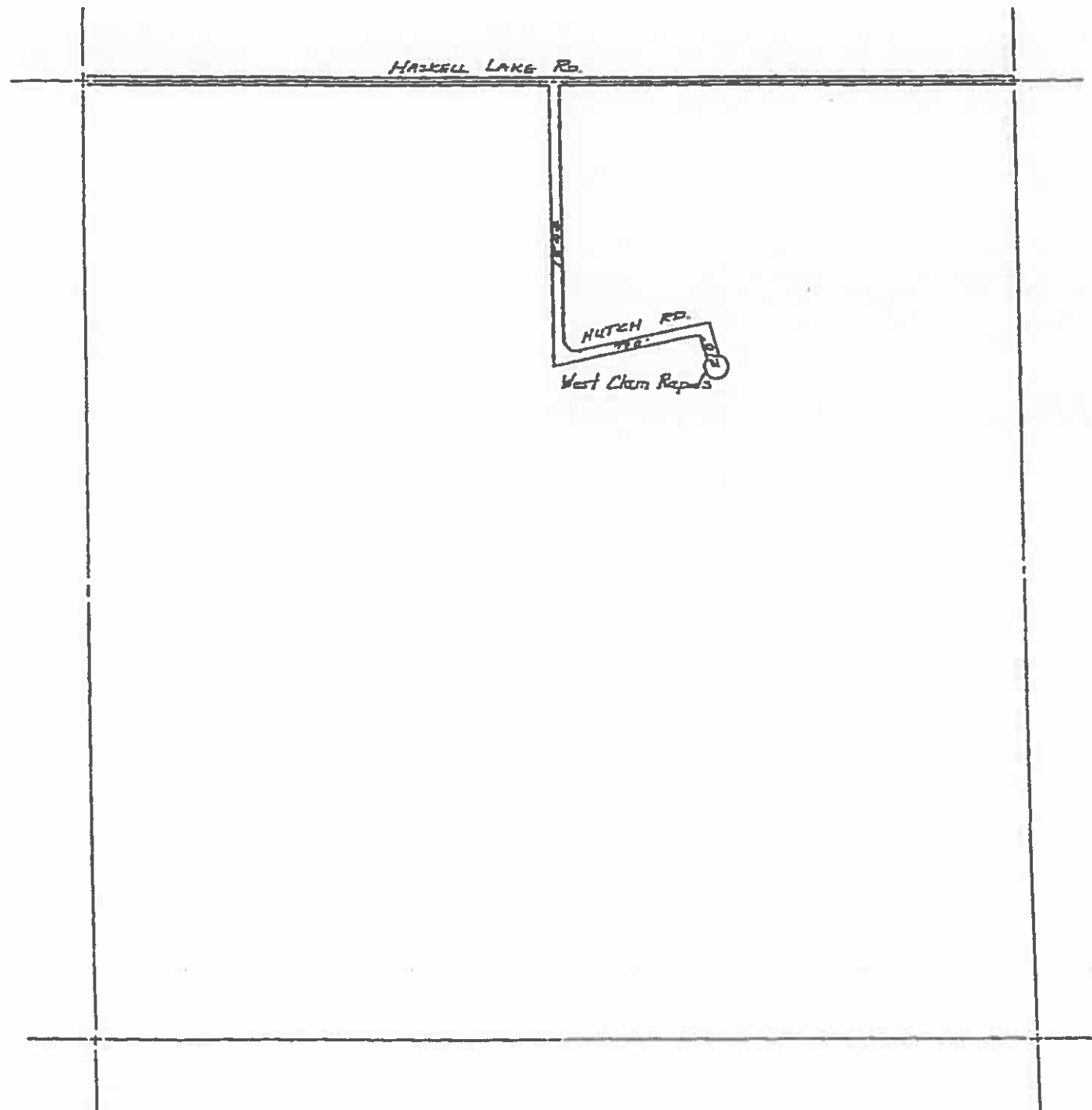
I HEREBY CERTIFY THAT THE ROADS SHOWN  
 HEREON BY SYMBOL OR IN GREEN AS LOCAL  
 ROADS ARE IN USE AND ARE UNDER THE  
 JURISDICTION OF THE COUNTY ROAD COM-  
 MISSION.

CHAIRMAN \_\_\_\_\_ DATE \_\_\_\_\_



SCALE 0 600 1200  
  
 One inch equals 600 feet

TOWNSHIP WINTERFIELD  
 SECTION 3 T20N - R6W  
 COUNTY CLARE



LEGEND

- COUNTY LINE
- CORPORATE LIMITS
- STATE TRUNKLINE
- COUNTY PRIMARY
- COUNTY LOCAL
- ADJACENT COUNTY
- CITY OR VILLAGE
- STREET

TOTAL FEET 2544 EQUALS 0.48 MILE

I HEREBY CERTIFY THAT THE ROADS SHOWN  
HEREON BY SYMBOL OR IN GREEN AS LOCAL  
ROADS ARE IN USE AND ARE UNDER THE  
JURISDICTION OF THE COUNTY ROAD COM-  
MISSION.

CHAIRMAN \_\_\_\_\_ DATE \_\_\_\_\_



SCALE 0 600 1200  
One inch equals 600 feet

TOWNSHIP WINTERFIELD  
SECTION 21 T20N-R6W  
COUNTY Clare